



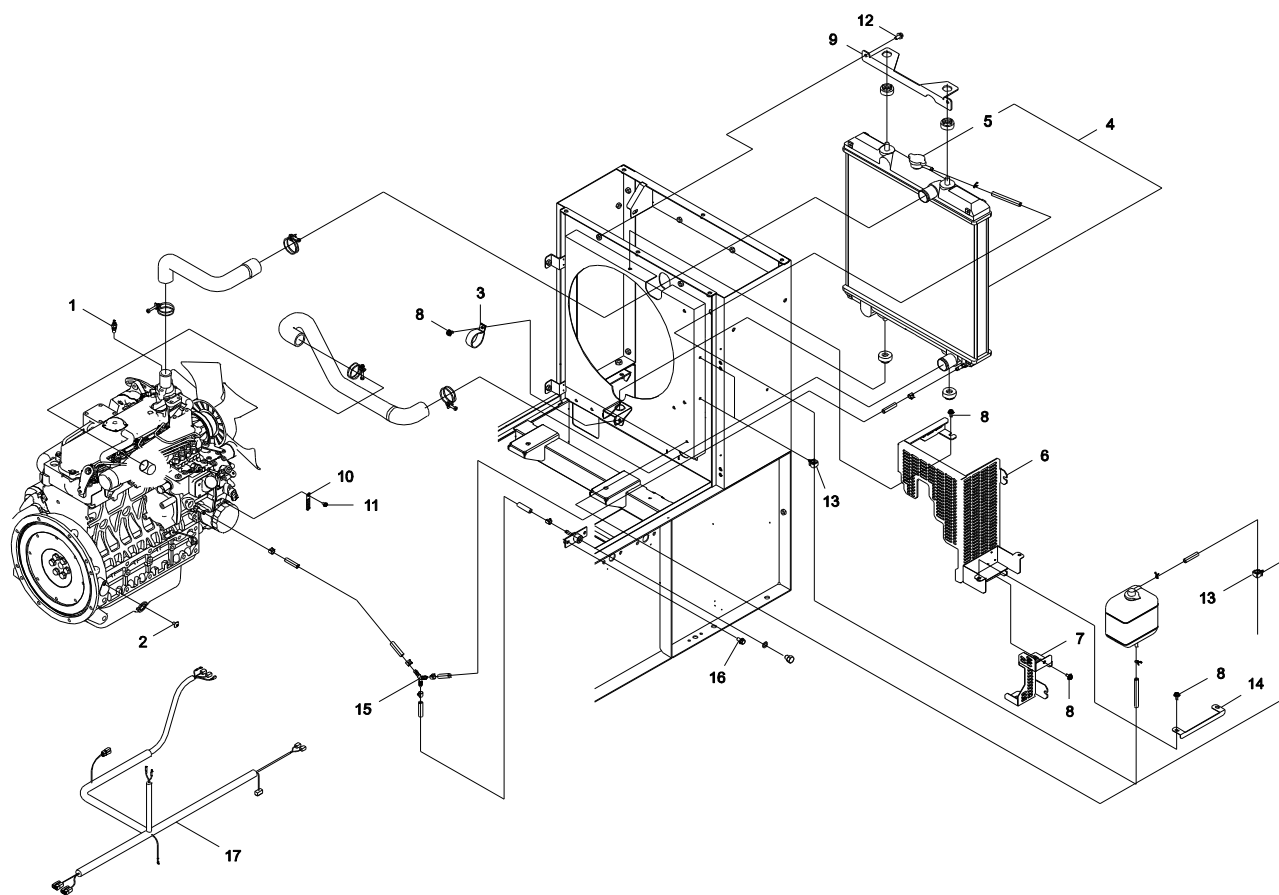
PARTS CATALOGUE

DG20MK-P/ANZ

01000001 -

1. ENGINE, RADIATOR

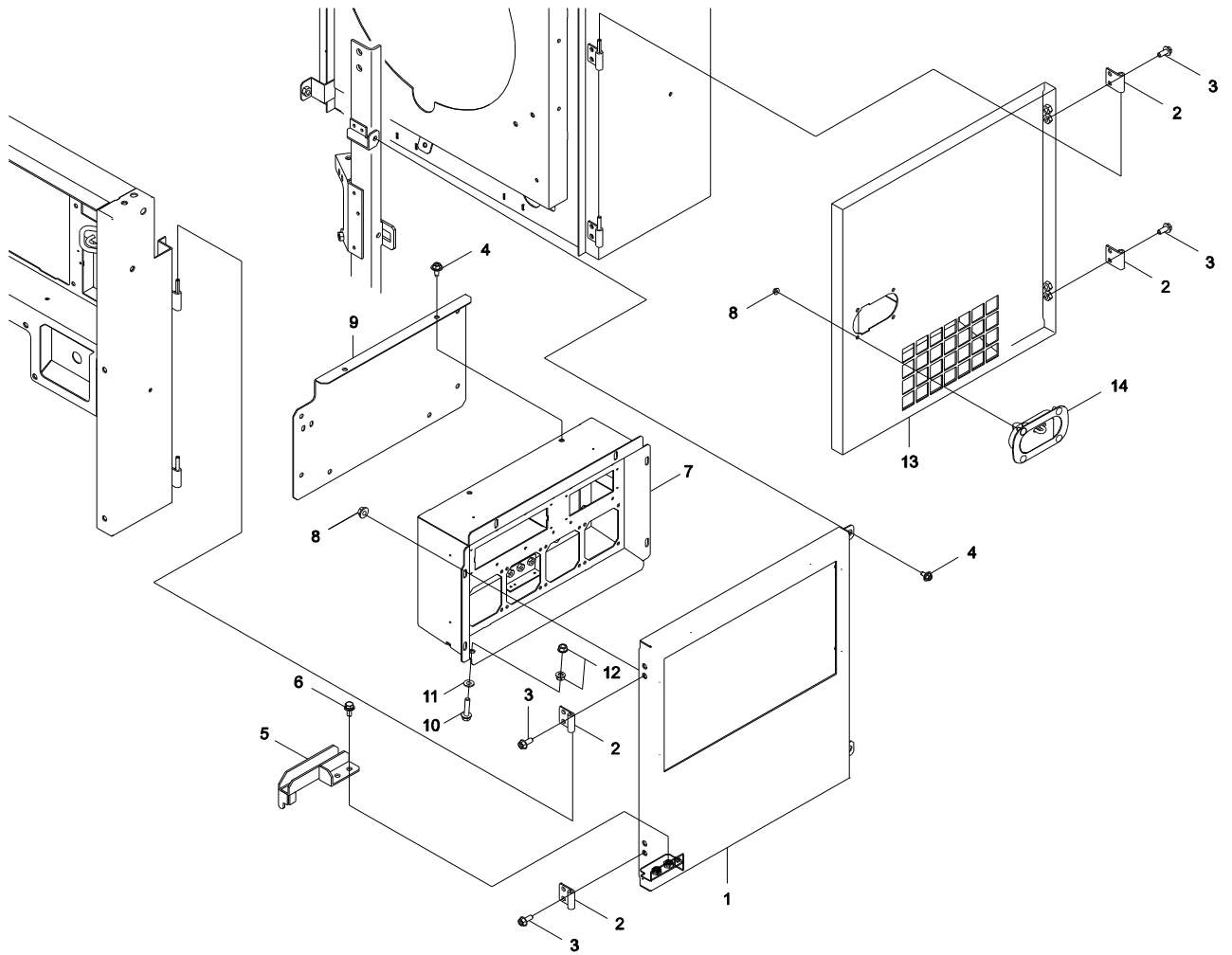
DG20MK-P/ANZ



KEY	LV	PART NUMBER	Q'TY	DESCRIPTION	REMARKS	NOTE1	NOTE2
1		G365-000040	1	GAUGE			
2		91318-08012	1	SCREW			
3		V490-000820	1	CORD CLAMP			
4		G200-000100	1	RADIATOR ASSY			
5	+	M608-000040	1	RADIATOR CAP			
6		A172-002890	1	COVER,FAN			
7		A172-002900	1	COVER,FAN			
8		V204-001090	8	BOLT FT SW			
9		G201-000390	1	RADIATOR STAY			
10		V490-000810	1	CORD CLAMP			
11		91564-06010	1	SCREW-SW			
12		V205-001170	2	BOLT,8	M8*20-SPW		
13		V495-002510	3	BAND			
14		G126-000230	1	BRACKET,TANK			
15		M601-000170	1	JOINT			
16		V205-001120	2	BOLT,8	BM-8*20 W SW		
17		C130-000340	1	HARNESS, WIRE			

2. RIGHT COVER

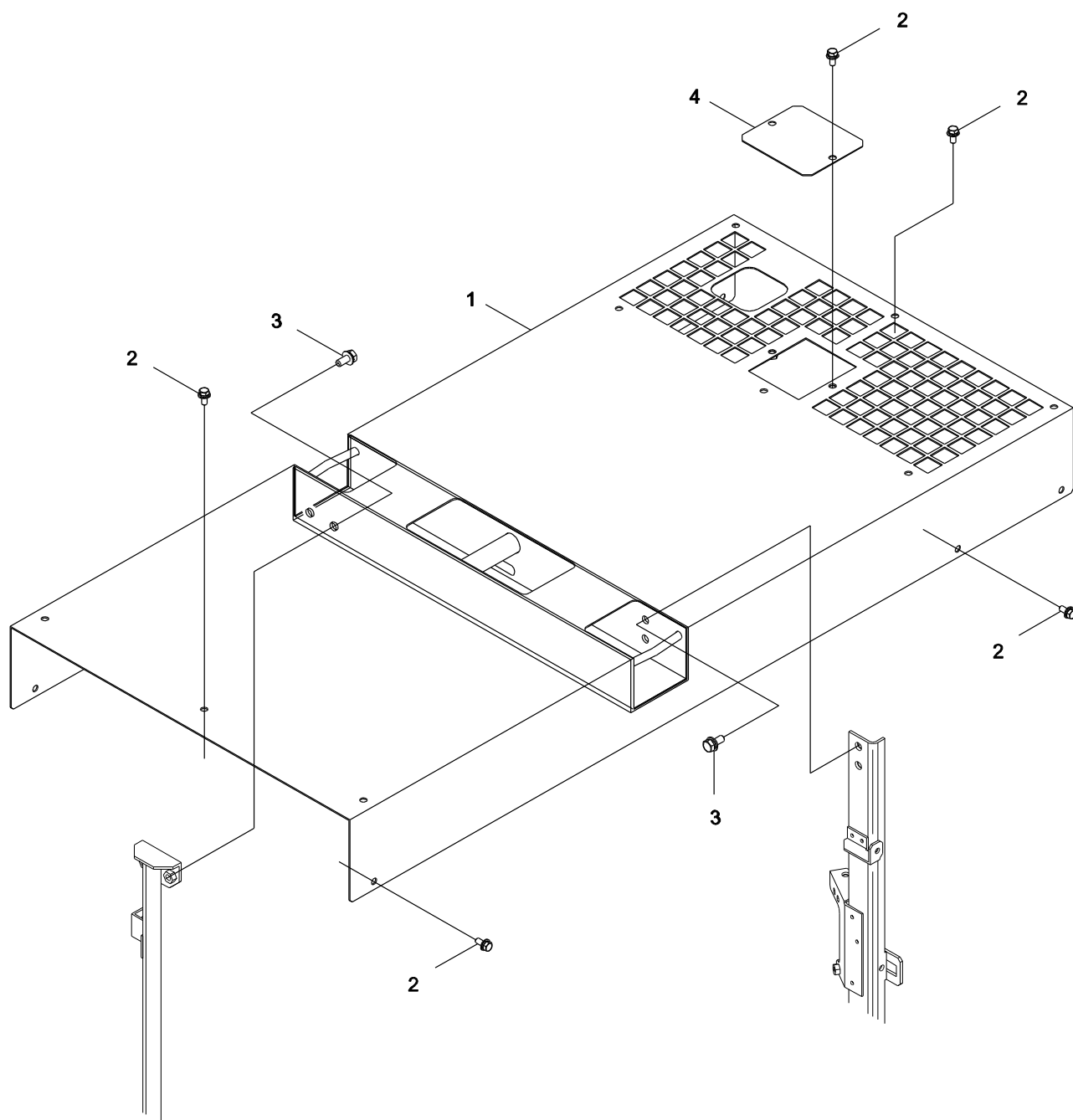
DG20MK-P/ANZ



KEY	LV	PART NUMBER	Q'TY	DESCRIPTION	REMARKS	NOTE1	NOTE2
1		M409-001130	1	DOOR,SIDE			
2		J485-000280	4	HINGE			
3		91083-08020	8	FLANGE BOLT			
4		V204-001090	10	BOLT FT SW			
5		G257-000550	1	STOPPER			
6		V205-001170	2	BOLT,8	M8*20-SPW		
7		C160-001610	1	PANEL,OPERATION			
8		V264-000220	10	FLANGE NUT			
9		M470-003080	1	COVER			
10		91034-08040	1	BOLT SW			
11		900602-00008	1	WASHER 8	8.4*17*1.6		
12		V265-000450	2	NUT,8			
13		M406-001050	1	DOOR,RIGHT			
14		C701-000420	1	LOCK COVER			

3. TOP COVER

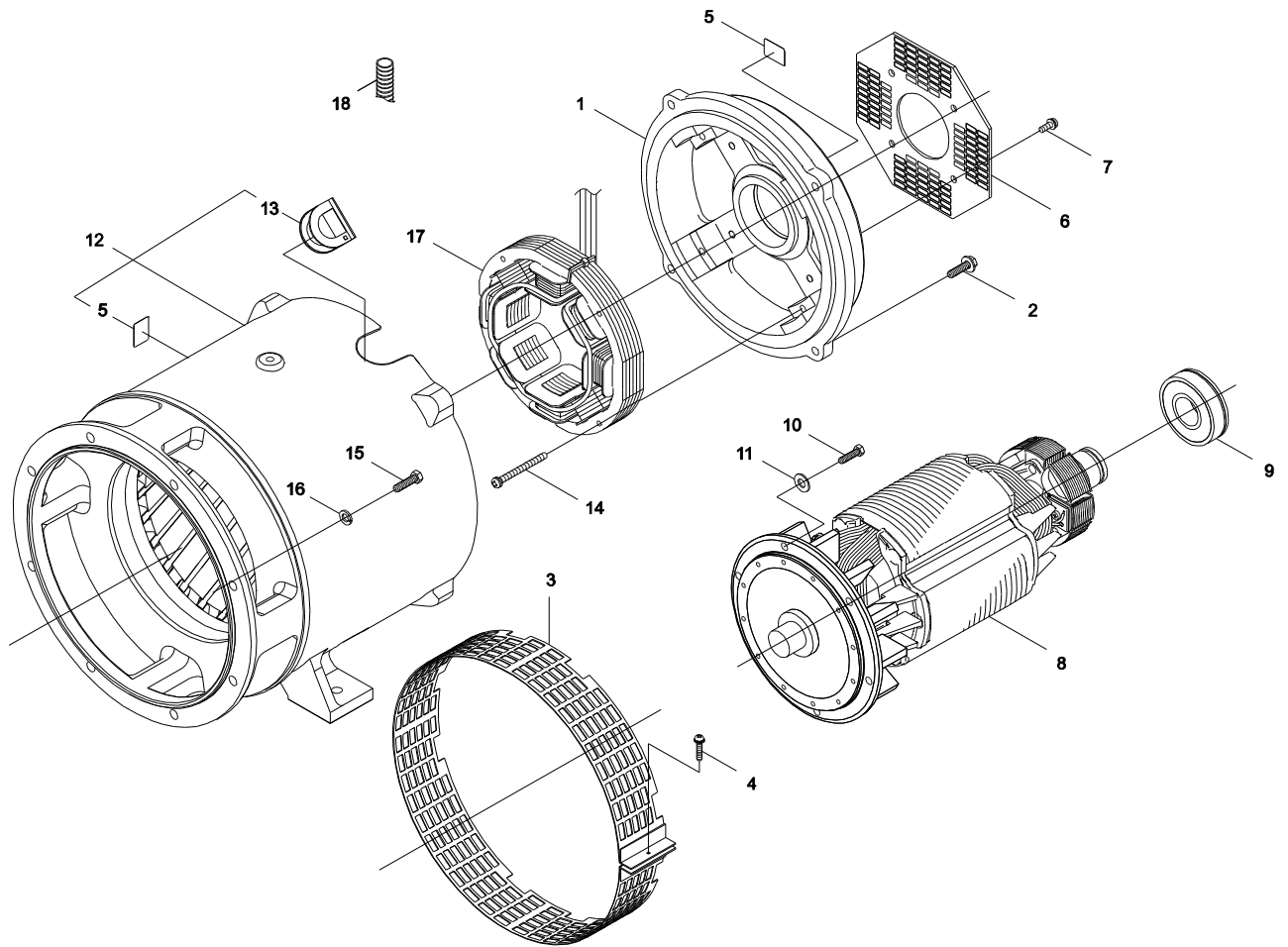
DG20MK-P/ANZ



KEY	LV	PART NUMBER	Q'TY	DESCRIPTION	REMARKS	NOTE1	NOTE2
1		J492-000720	1	BONNET			
2		V205-001120	17	BOLT,8	BM-8*20 W SW		
3		V206-000580	4	BOLT,10	M10*25-SPW		
4		J480-000640	1	LID,COVER			

4. GENERATOR

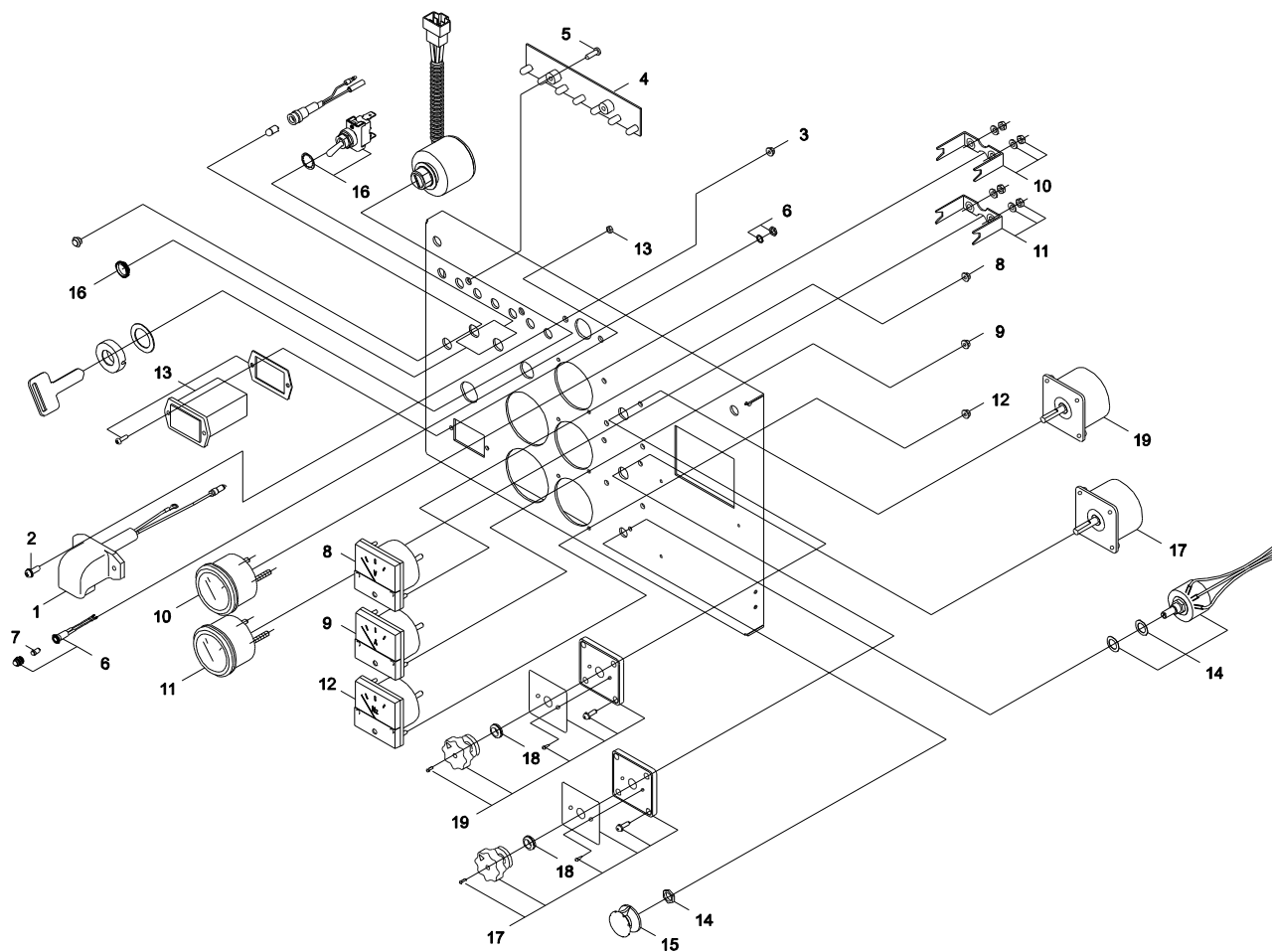
DG20MK-P/ANZ



KEY	LV	PART NUMBER	Q'TY	DESCRIPTION	REMARKS	NOTE1	NOTE2
1		M305-000050	1	REAR BRACKET			
2		91022-10035	4	BOLT SW			
3		A172-001720	1	COVER,FAN			
4		91564-04030	1	SCREW SW			
5		M703-000020	1	LABEL THERMOMETER			
6		J470-004490	1	COVER			
7		91564-05010	4	SCREW SPW			
8		M102-000531	1	ROTOR			
9		V592-000170	1	BEARING			
10		91027-08030	8	BOLT			
11		900605-00008	8	WASHER, SPRING 8	8		
12		A041-000610	1	STATOR,ASM			
13	+	V144-000610	1	GROMMET			
5	+	M703-000020	1	LABEL THERMOMETER			
14		91564-05040	4	SCREW SW			
15		91027-10030	8	BOLT			
16		900605-00010	8	WASHER, SPRING 10	10		
17		A041-000300	1	STATOR,ASM			
18		V475-005800	1	TUBE			

5. CONTROL PANEL

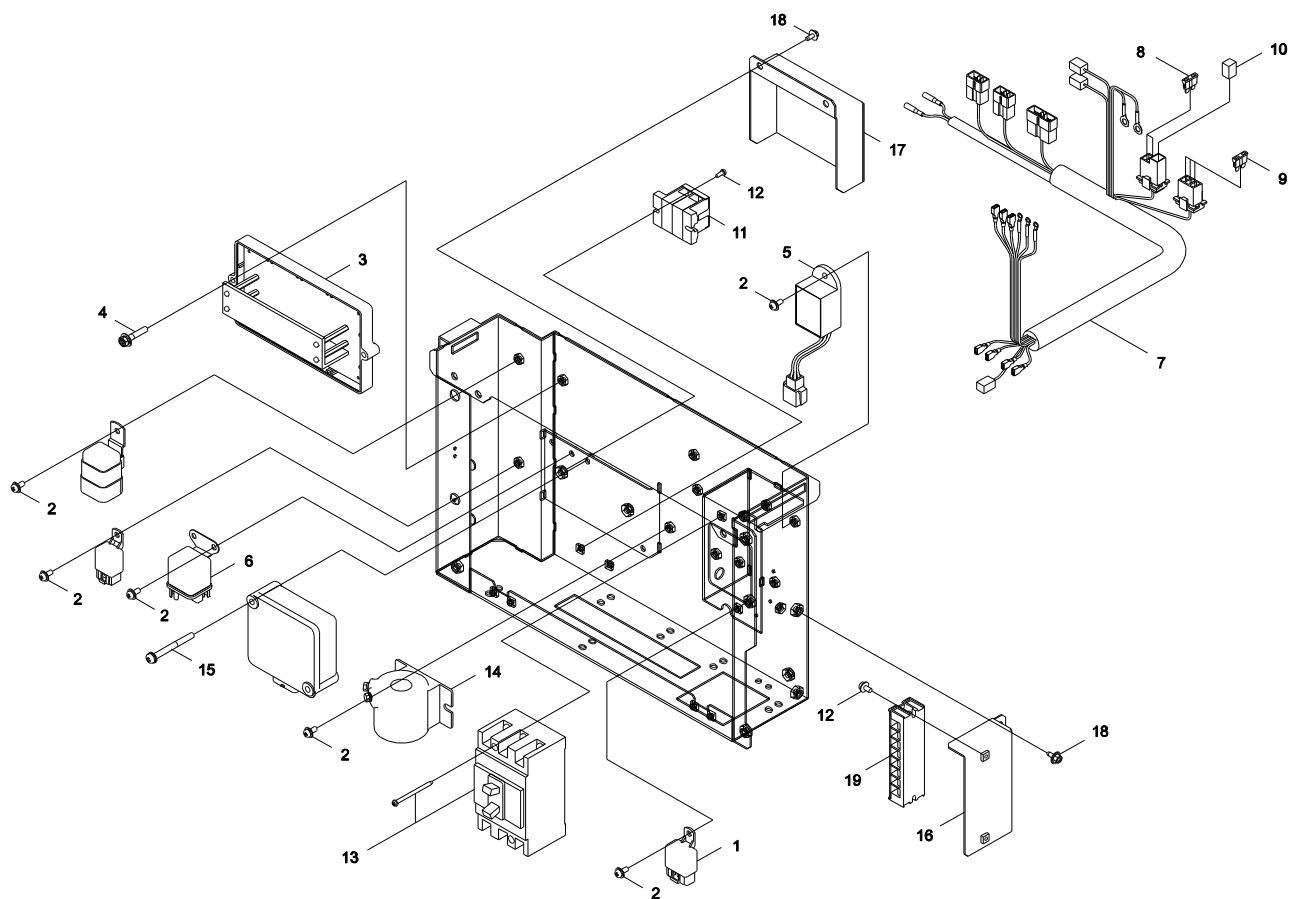
DG20MK-P/ANZ



KEY	LV	PART NUMBER	Q'TY	DESCRIPTION	REMARKS	NOTE1	NOTE2
1		G327-000400	1	LAMP,PILOT	N6210-60001		
2		91575-04016	2	SCREW PM SPW			
3		V262-000190	2	FLANGE NUT			
4		C124-000230	1	MODULE,CIRCUIT			
5		91461-04014	2	SCREW			
6		G327-000540	1	LAMP,PILOT			
7	+	G328-000060	1	LAMP			
8		M109-000140	1	METER (V)			
9		M109-000160	1	METER (A)			
10		M109-000210	1	METER (COOLANT TEMP)			
11		G318-000010	1	FUEL METER			
12		M109-000410	1	METER			
13		G319-000060	1	HOUR METER			
14		M112-000010	1	VOLUME COMP			
15		E145-000060	1	DIAL			
16		A045-000510	2	TOGGLE SWITCH			
17		G334-001300	1	SWITCH			
18		V144-000530	2	GROMMET			
19		G334-001310	1	SWITCH			

6. CONTROL BOX

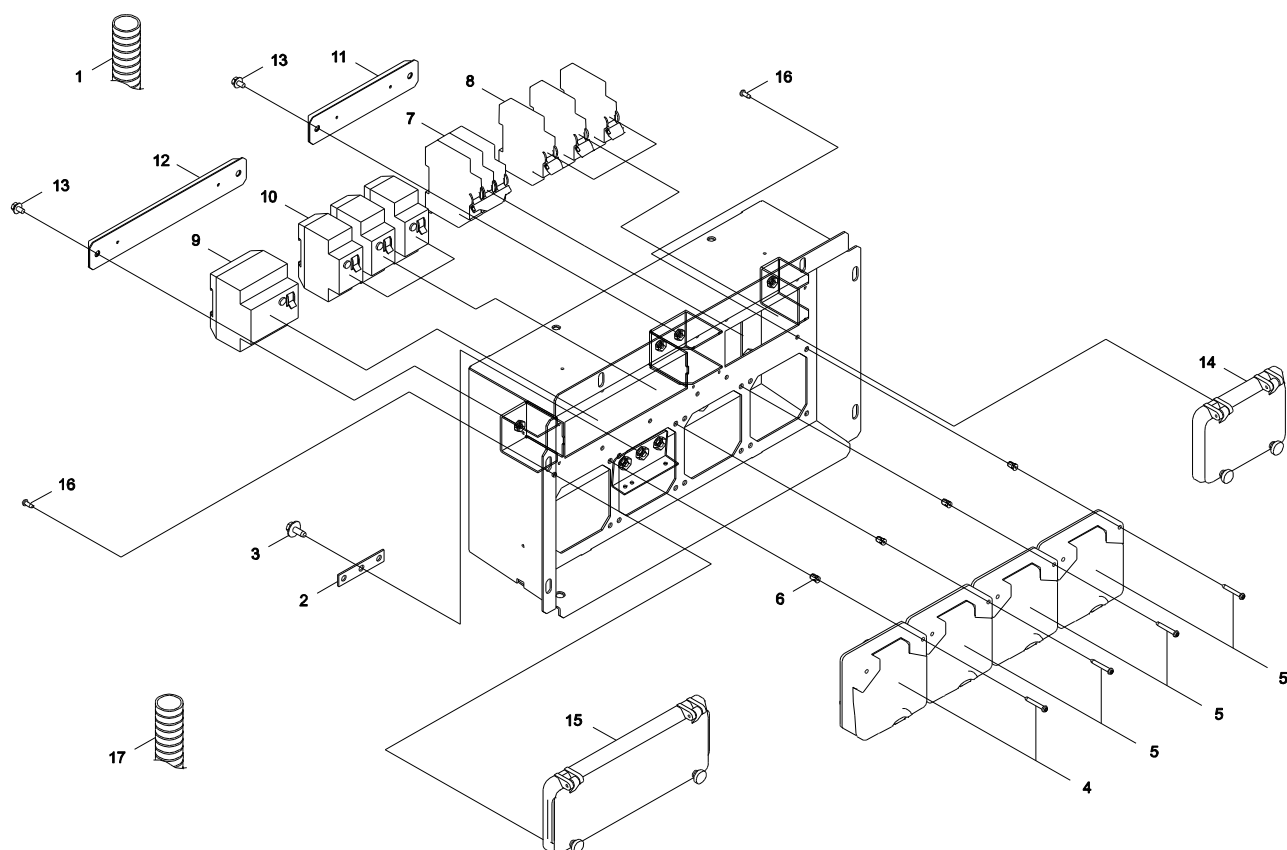
DG20MK-P/ANZ



KEY	LV	PART NUMBER	Q'TY	DESCRIPTION	REMARKS	NOTE1	NOTE2
1		G343-000490	3	RELAY			
2		91568-05012	13	SCREW SLPW			
3		G370-001760	1	UNIT CONTROL			
4		91036-05025	2	BOLT SW			
5		G370-000470	2	PRINT CIRCUIT			
6		G343-000210	1	RELAY			
7		G360-002140	1	HARNESS,WIRE			
8	+	G350-000520	2	FUSE	10A		
9	+	G350-000410	3	FUSE	7127-5060 5A		
10	+	G350-000370	1	FUSE			
11		M308-000520	1	BLOCK,TERMINAL			
12		91564-04016	4	SCREW SPW			
13		M111-000460	1	BREAKER			
14		M108-000030	2	CT			
15		91564-05050	2	SCREW SW			
16		C519-006440	1	STAY			
17		M470-003070	1	COVER			
18		V204-001090	4	BOLT FT SW			
19		M308-000250	1	TERMINAL BLOCK			

7. OUTPUT TERMINAL

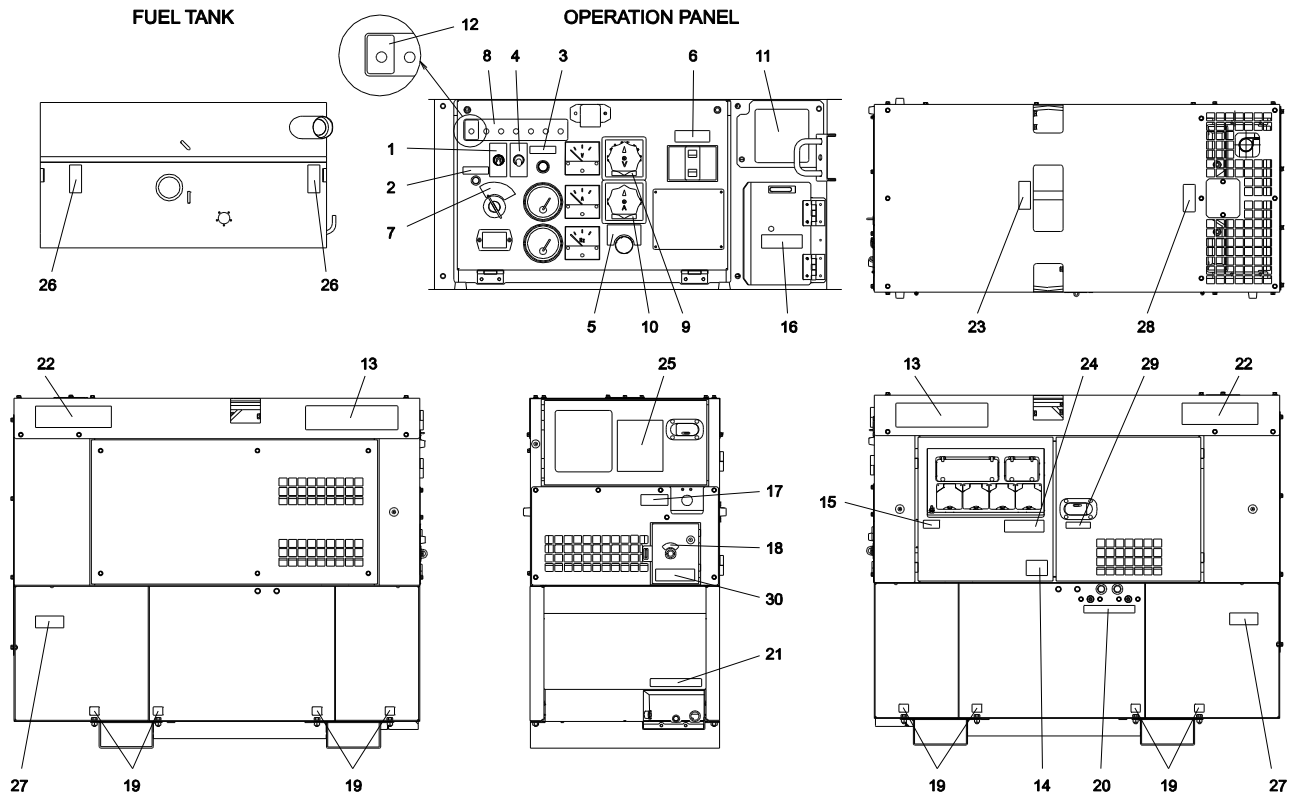
DG20MK-P/ANZ



KEY	LV	PART NUMBER	Q'TY	DESCRIPTION	REMARKS	NOTE1	NOTE2
1		V475-008670	1	TUBE			
2		V150-003140	1	PLATE,EYE			
3		V204-001090	3	BOLT FT SW			
4		C154-000191	1	RECEPTACLE			
5		C154-000201	3	RECEPTACLE			
6		C690-000150	16	FASTENER			
7		M126-000000	1	BREAKER	4CB320/6 3P3E20A		
8		M126-000040	3	BREAKER			
9		M111-001400	1	BREAKER			
10		M111-001410	3	BREAKER			
11		C519-006450	1	STAY			
12		C519-006460	1	STAY			
13		91036-05010	4	BOLT SW			
14		A405-000030	1	COVER,BREAKER	6MODUIES 40985		
15		A405-000050	1	COVER,BREAKER			
16		900245-04010	12	SCREW 4*10	4*10		
17		V475-008650	1	TUBE			

8. LABEL

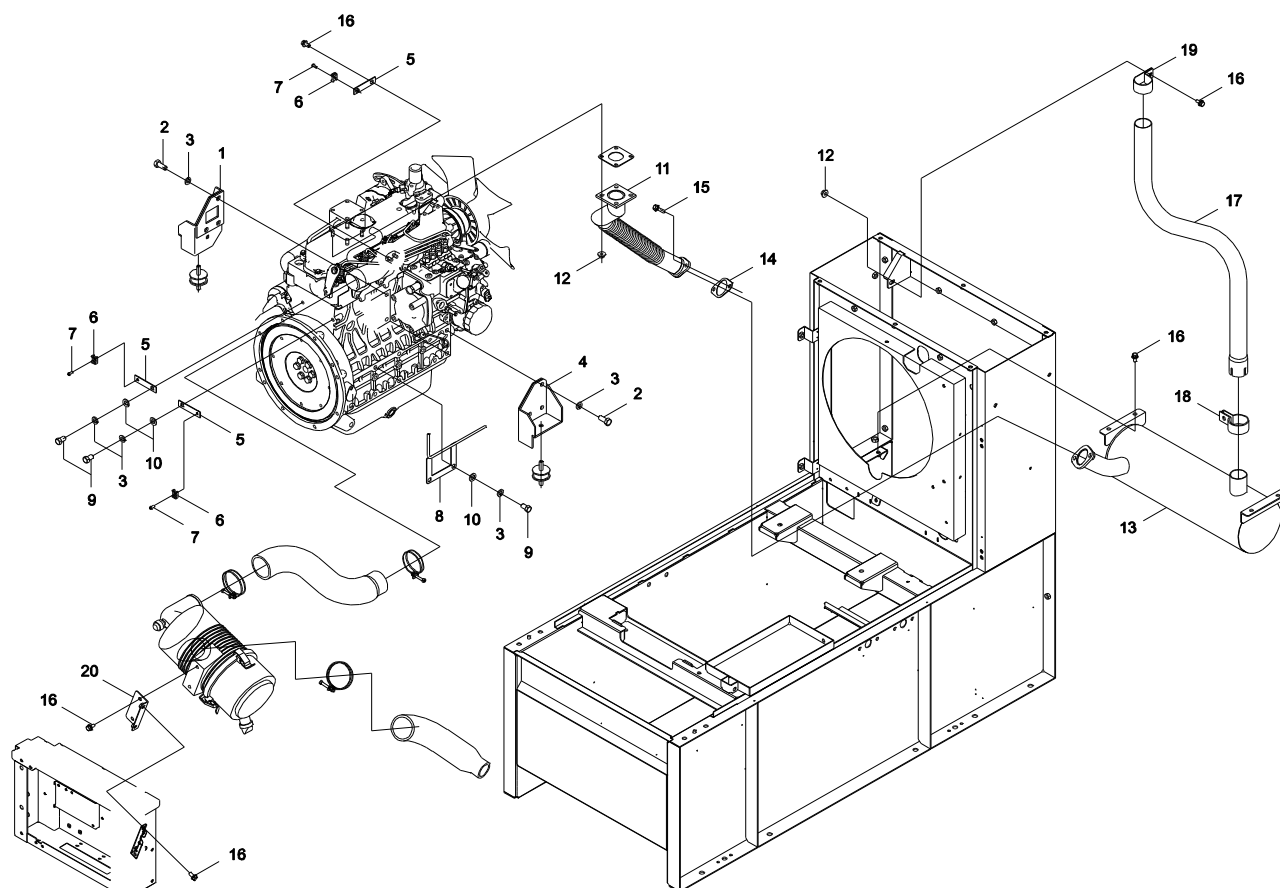
DG20MK-P/ANZ



KEY	LV	PART NUMBER	Q'TY	DESCRIPTION	REMARKS	NOTE1	NOTE2
1		M707-000090	1	LABEL INST			
2		M707-000100	1	LABEL INST			
3		M704-000650	1	LABEL INST			
4		M704-000660	1	LABEL INST			
5		M704-000670	1	LABEL INST			
6		M704-000680	1	LABEL INST			
7		M707-000050	1	LABEL INST			
8		M707-000880	1	LABEL,INST			
9		M707-000330	1	LABEL,INST			
10		M707-000320	1	LABEL,INST			
11		X524-005370	1	LABEL			
12		X524-005400	1	LABEL			
13		X504-006320	2	LABEL,BRAND			
14		M707-000900	1	LABEL,INST			
15		M704-001400	1	LABEL INST			
16		M707-000060	1	LABEL INST			
17		M707-000070	1	LABEL INST			
18		M707-000370	1	LABEL,INST			
19		M707-000380	8	LABEL,INST			
20		M707-000910	1	LABEL,INST			
21		M707-000400	1	LABEL,INST			
22		M705-001000	2	LABEL,FEATURE			
23		X505-007550	1	LABEL,CAUTION			
24		X505-007560	1	LABEL,CAUTION			
25		X505-007571	1	LABEL,CAUTION			
26		X505-007820	2	LABEL,CAUTION			
27		X505-007830	2	LABEL,CAUTION			
28		X505-007840	1	LABEL,CAUTION			
29		X505-007630	1	LABEL,CAUTION			
30		X505-007650	1	LABEL,CAUTION			

9. MUFFLER, AIR CLEANER

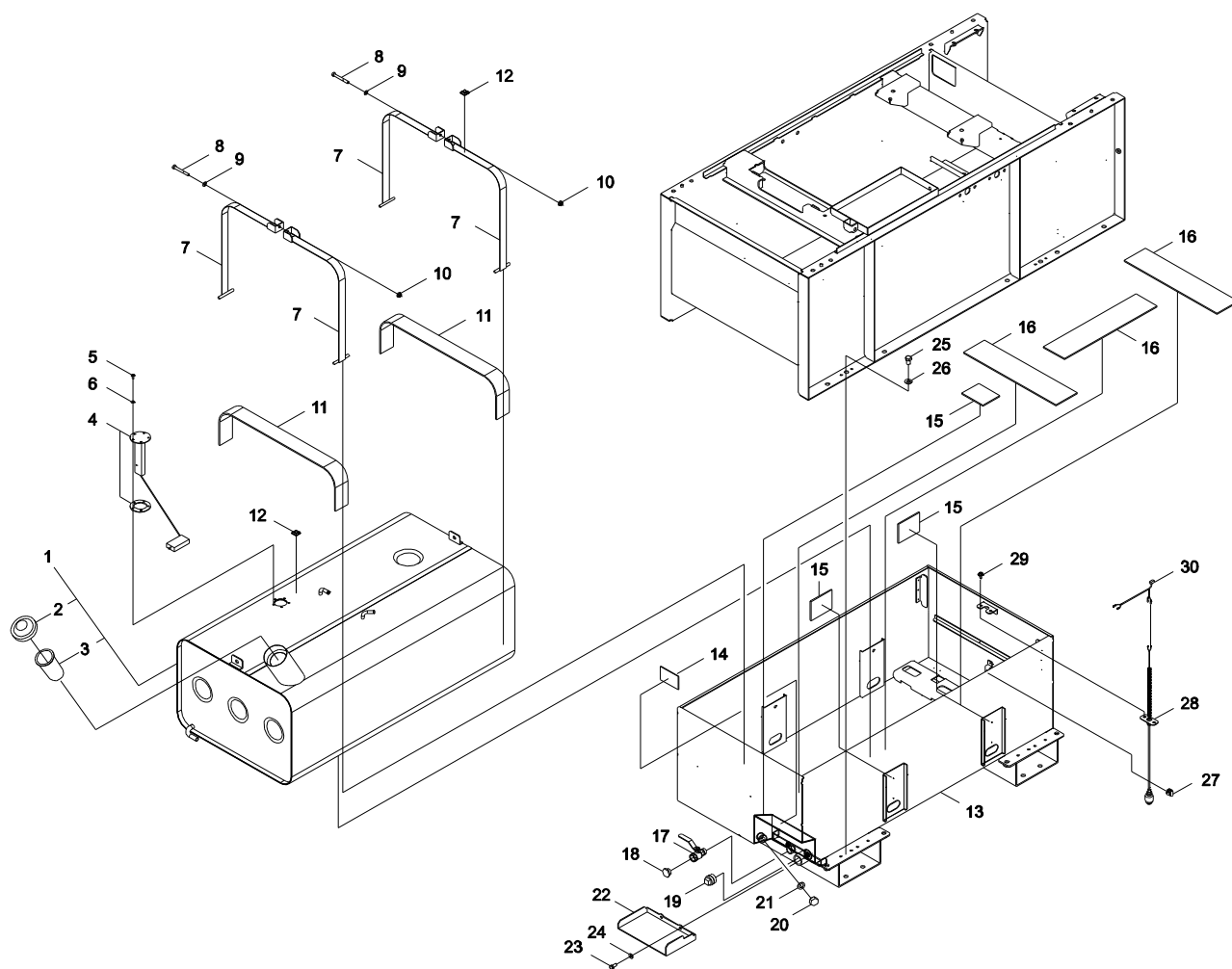
DG20MK-P/ANZ



KEY	LV	PART NUMBER	Q'TY	DESCRIPTION	REMARKS	NOTE1	NOTE2
1		G121-000260	1	STAY,ENGINE			
2		91010-12030	6	BOLT			
3		900605-00012	10	WASHER, SPRING 12	12		
4		G121-000270	1	STAY,ENGINE			
5		C519-002460	3	STAY			
6		M416-000010	3	TIE MOUNT			
7		91343-05012	3	SCREW			
8		C519-003680	1	STAY			
9		V207-000100	4	BOLT			
10		900602-00012	4	WASHER 12	13*24*2.5		
11		G231-000720	1	PIPE,EXHAUST			
12		V265-000290	5	FLANGE NUT			
13		G230-000320	1	MUFFLER,EXH			
14		V104-001740	1	GASKET			
15		900147-08030	2	BOLT, 8*30	8*30		
16		V205-001170	10	BOLT,8	M8*20-SPW		
17		G231-001050	1	PIPE,EXHAUST			
18		V495-002000	1	CLAMP			
19		V495-002500	1	BAND			
20		G211-000220	1	STAY,CLEANER			

10. FUEL TANK, OIL GUARD

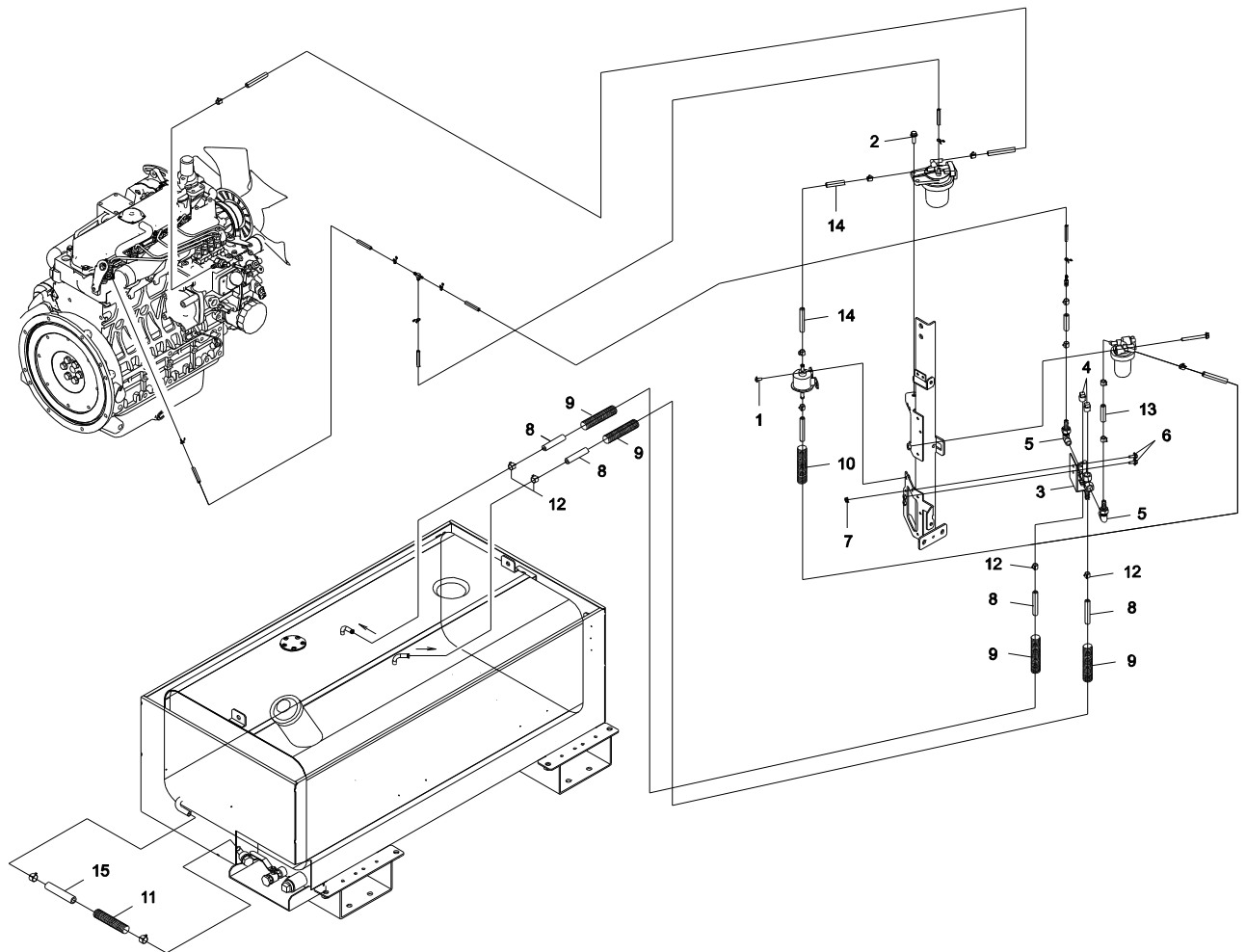
DG20MK-P/ANZ



KEY	LV	PART NUMBER	Q'TY	DESCRIPTION	REMARKS	NOTE1	NOTE2
1		G250-000770	1	TANK,FUEL			
2	+	G255-000010	1	TANK CAP			
3	+	A369-000160	1	STRAINER			
4		E325-000050	1	FUEL GAUGE			
5		91463-05012	5	SCREW TRUSS			
6		V500-000020	5	SEAL WASHER			
7		A392-000200	4	BAND, FUEL TANK			
8		91002-08065	2	BOLT	B-8*65		
9		900617-00008	2	WASHER			
10		V265-000290	2	FLANGE NUT			
11		V420-003920	2	CUSHION	T5*60*800		
12		M416-000040	4	TIE MOUNT			
13		J447-001270	1	GUARD			
14	+	M700-000010	1	PAD			
15	+	V420-003050	3	PAD			
16	+	V420-003930	3	CUSHION	T5*100*440		
17		E265-000190	1	VALVE	BV23-04		
18		E328-000220	1	PLUG,DRAIN			
19		E328-000230	1	PLUG,DRAIN			
20		E328-000140	1	DRAIN PLUG			
21		V106-000110	1	SEAL WASHER			
22		J447-001280	1	GUARD			
23		91098-08020	2	BOLT	B-8*20		
24		92229-08000	2	WASHER	W-8		
25		91098-12020	8	BOLT	B-12*20		
26		92229-12000	8	WASHER	W-12		
27		V490-001110	1	CLIP			
28		G334-001200	1	SWITCH			
29		V204-001090	2	BOLT FT SW			
30		C130-000360	1	HARNESS, WIRE			

11. FUEL TANK AND PIPING

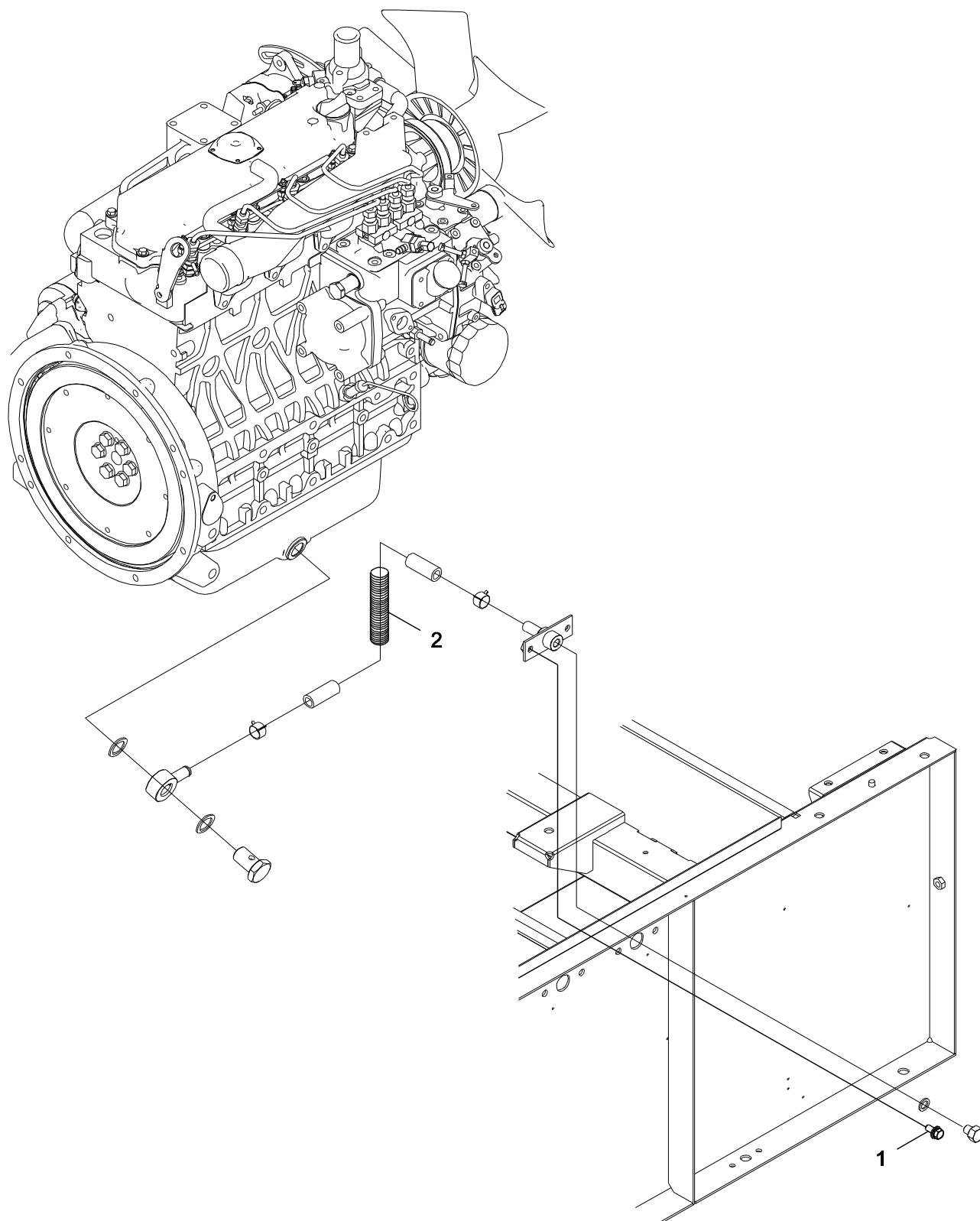
DG20MK-P/ANZ



KEY	LV	PART NUMBER	Q'TY	DESCRIPTION	REMARKS	NOTE1	NOTE2
1		900216-06014	2	SCREW 6*14	6*14		
2		900147-08030	2	BOLT, 8*30	8*30		
3		E265-000120	1	COCK			
4		E328-000130	2	DRAIN PLUG			
5		E237-000140	2	ELBOW			
6		V204-001090	2	BOLT FT SW			
7		V264-000220	1	FLANGE NUT			
8		K401-000540	2	HOSE			
9		V475-008710	2	TUBE			
10		V475-005700	1	TUBE			
11		V476-000460	1	TUBE	22*L200		
12		V495-001660	4	HOSE CLAMP			
13		K400-002980	1	HOSE			
14		K400-003000	1	HOSE			
15		K403-000220	1	HOSE,13			

12. OIL PIPE

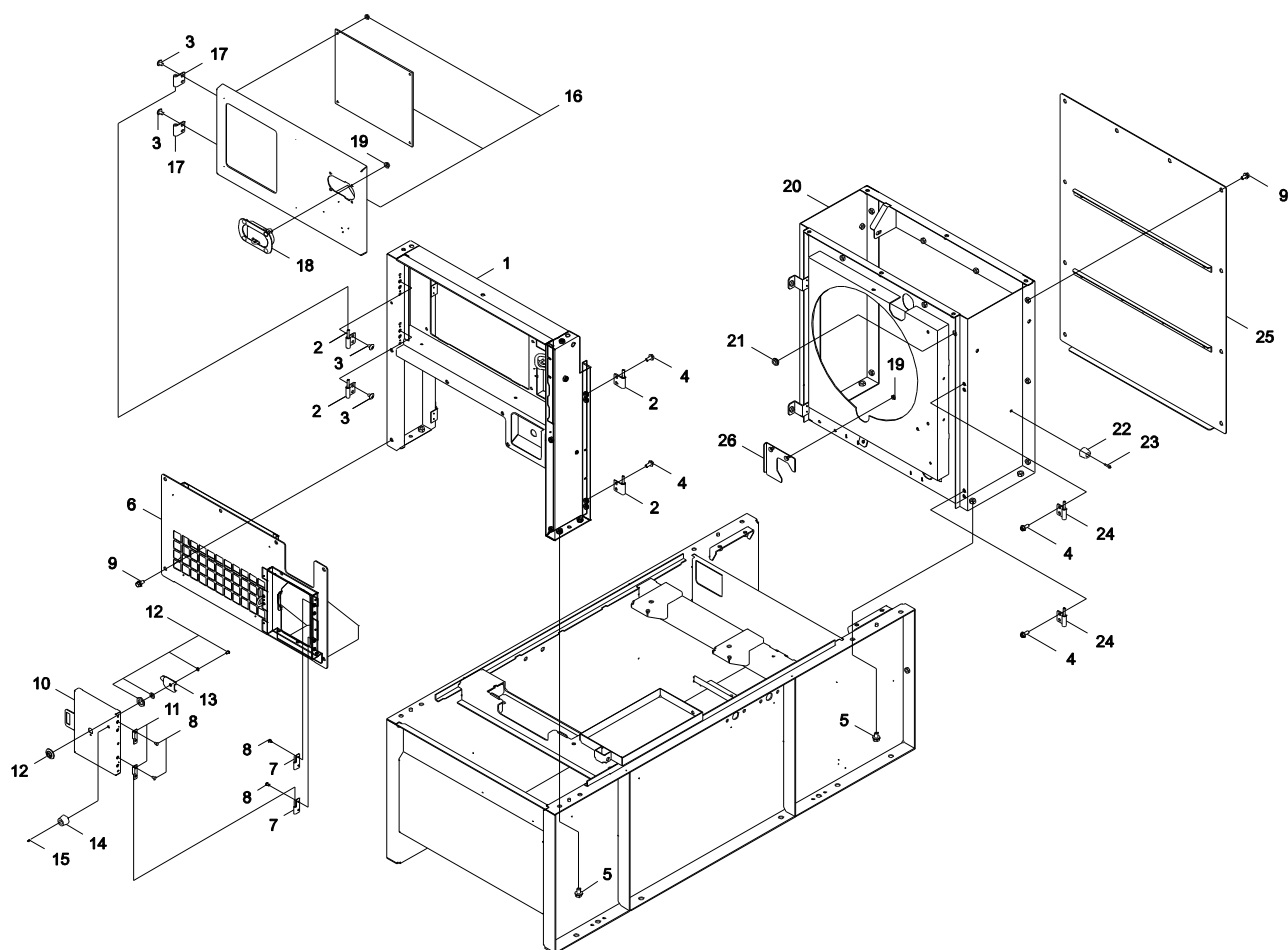
DG20MK-P/ANZ



KEY	LV	PART NUMBER	Q'TY	DESCRIPTION	REMARKS	NOTE1	NOTE2
1		V205-001120	2	BOLT,8	BM-8*20 W SW		
2		V475-008240	1	TUBE			

13. BONNET

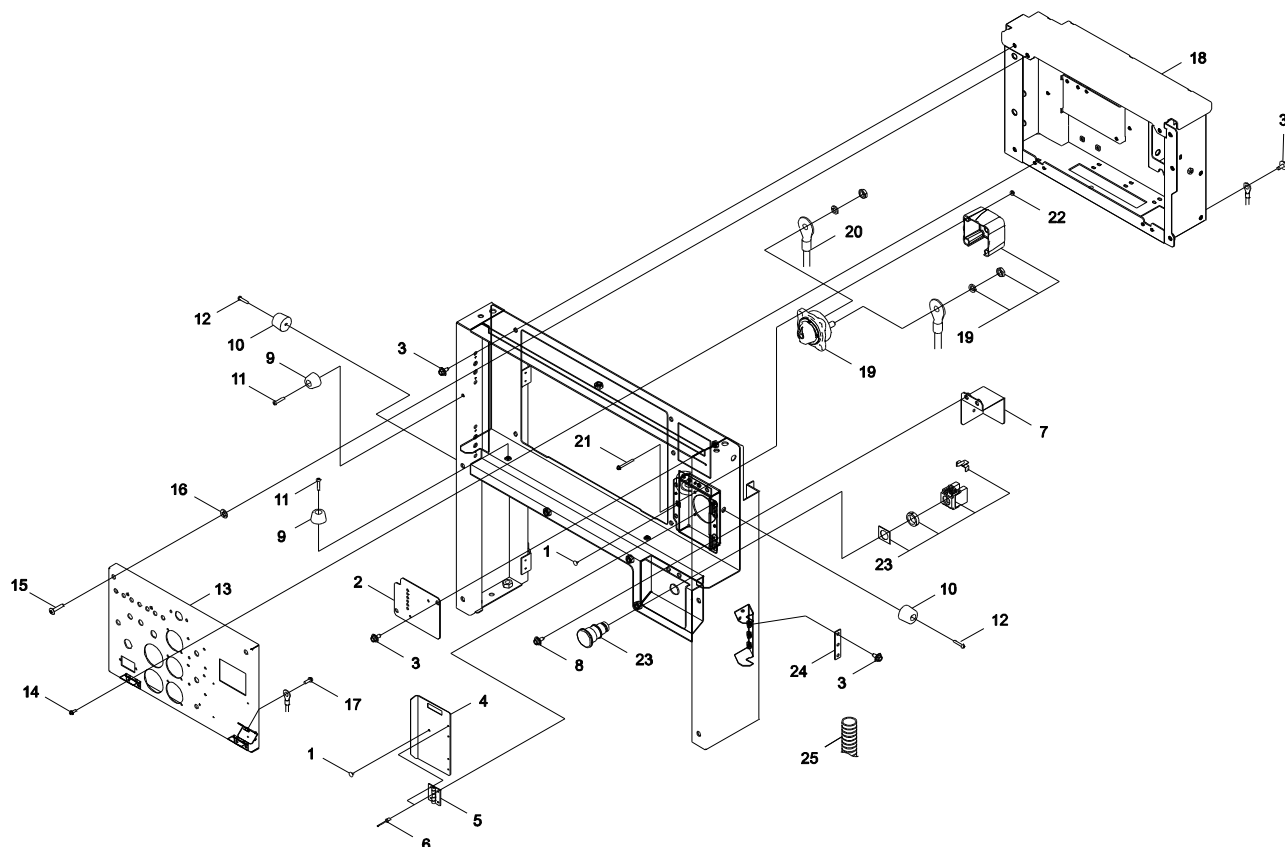
DG20MK-P/ANZ



KEY	LV	PART NUMBER	Q'TY	DESCRIPTION	REMARKS	NOTE1	NOTE2
1		J494-000970	1	BONNET			
2		J485-000250	4	HINGE			
3		91318-08020	8	SCREW TRUSS			
4		91083-08020	8	FLANGE BOLT			
5		91034-10020	8	BOLT SPW			
6		J500-001010	1	PANEL			
7		J485-000310	2	HINGE			
8		91447-04012	8	SCREW TAPPING			
9		V205-001120	17	BOLT,8	BM-8*20 W SW		
10		M470-003050	1	COVER			
11		J485-000330	2	HINGE			
12		C701-000430	1	HANDLE			
13		G257-000230	1	LOCK LEVER			
14		V420-003070	1	STAND RUBBER			
15		91381-04020	1	SCREW TAPPING			
16		M040-000480	1	FRONT DOOR,ASM			
17		J485-000280	2	HINGE			
18		C701-000420	1	LOCK COVER			
19		V264-000220	6	FLANGE NUT			
20		J492-000711	1	BONNET			
21		V144-000440	1	GROMMET			
22		V420-003510	1	STAND RUBBER			
23		91381-04030	1	SCREW TAPPING			
24		J485-000260	2	HINGE			
25		M415-000490	1	PLATE,REAR			
26		A301-000050	1	PLATE,MUFFLER			

14. FRONT COVER

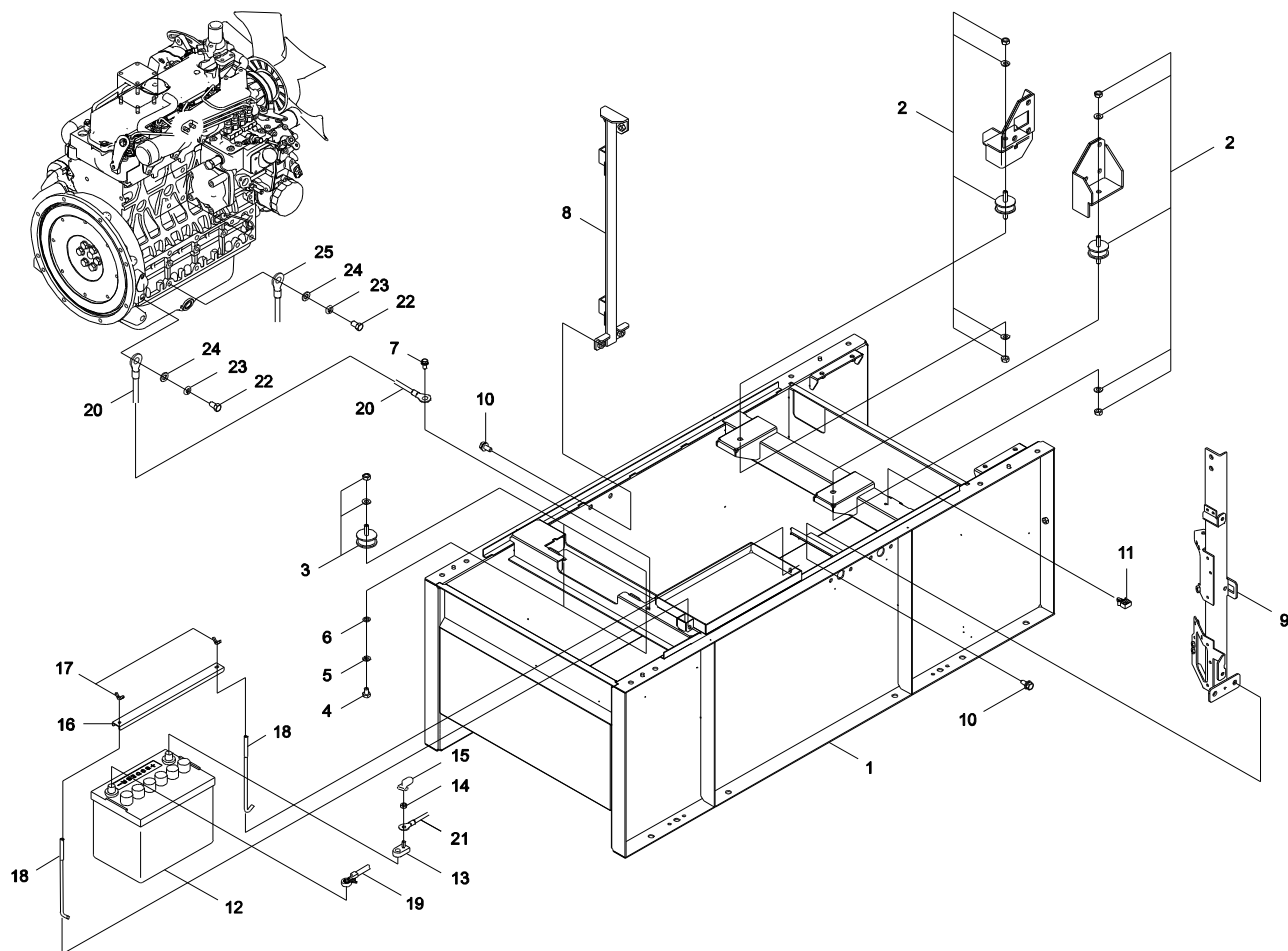
DG20MK-P/ANZ



KEY	LV	PART NUMBER	Q'TY	DESCRIPTION	REMARKS	NOTE1	NOTE2
1		V420-003200	2	CUSHION			
2		M470-003060	1	COVER			
3		V204-001090	10	BOLT FT SW			
4		A447-000110	1	COVER, SWITCH KNOB			
5		J485-000570	2	HINGE			
6		V649-000130	8	BLIND RIVET			
7		M470-002970	1	COVER			
8		V204-001600	2	BOLT, 6	M6*16		
9		V420-003070	3	STAND RUBBER			
10		V420-003510	2	STAND RUBBER			
11		91381-04020	3	SCREW TAPPING			
12		91381-04030	2	SCREW TAPPING			
13		C160-001620	1	SCREW TAPPING			
14		91566-04012	4	PANEL, OPERATION			
15		91318-06030	2	SCREW TRUSS			
16		V324-000010	2	WASHER			
17		91568-05012	1	SCREW SLPW			
18		J430-001300	1	BOX, CONTROL			
19		G334-001320	1	SWITCH			
20		M386-000590	1	LEAD			
21		91564-04016	4	SCREW SPW			
22		V262-000190	4	FLANGE NUT			
23		G334-000770	1	BUTTON SWITCH			
24		V150-003140	1	PLATE, EYE			
25		V475-008660	1	TUBE			

15. BASE, FRAME

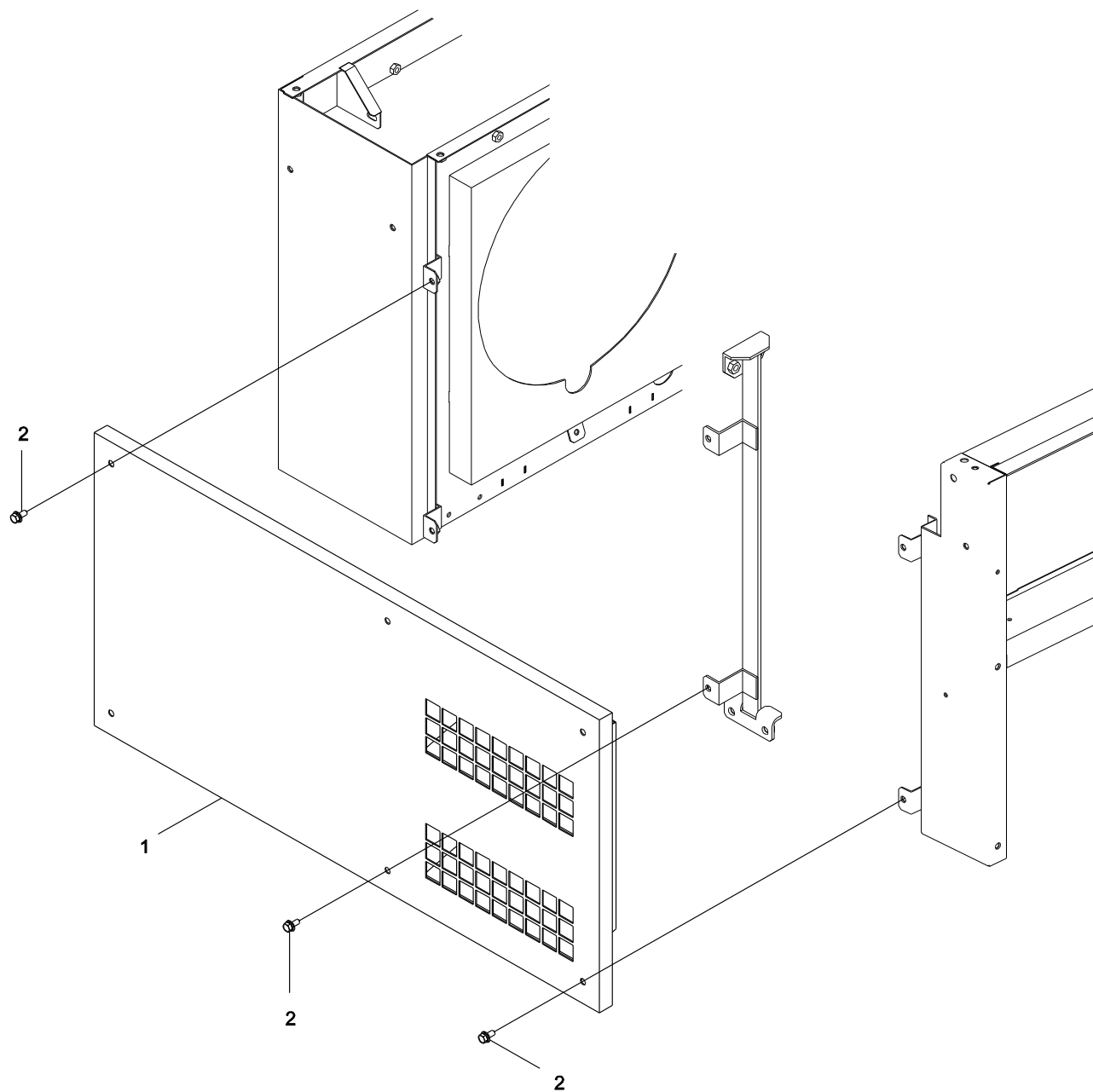
DG20MK-P/ANZ



KEY	LV	PART NUMBER	Q'TY	DESCRIPTION	REMARKS	NOTE1	NOTE2
1		J405-003190	1	FRAME			
2		V404-000140	2	AV RUBBER			
3		V404-000170	2	CUSHION,10			
4		91000-10016	2	BOLT	B-10*16		
5		900605-00010	2	WASHER, SPRING 10	10		
6		900617-00010	2	WASHER 10	10(10.5*18*2)		
7		V205-001170	1	BOLT,8	M8*20-SPW		
8		J415-000260	1	STAY,BONNET			
9		J415-000270	1	STAY,BONNET			
10		V206-000580	4	BOLT,10	M10*25-SPW		
11		V495-002510	1	BAND			
12		V481-000460	1	BATTERY			
13		V486-000240	1	TERMINAL			
14		V265-000310	1	NUT			
15		G305-000030	1	TERMINAL CAP			
16		G303-000350	1	HOLDER,BATTERY			
17		92190-08000	2	WING NUT			
18		V240-000240	2	BOLT,HOOK			
19		M386-000440	1	LEAD			
20		M384-000020	1	LEAD			
21		M384-000030	1	LEAD			
22		V207-000100	2	BOLT			
23		900605-00012	2	WASHER, SPRING 12	12		
24		900602-00012	2	WASHER 12	13*24*2.5		
25		M386-000580	1	LEAD			

16. LEFT COVER

DG20MK-P/ANZ



KEY	LV	PART NUMBER	Q'TY	DESCRIPTION	REMARKS	NOTE1	NOTE2
1		J425-002850	1	PANEL			
2		V205-001120	6	BOLT,8	BM-8*20 W SW		

Index					
Patrs Number Key No.		Patrs Number Key No.		Patrs Number Key No.	
900147-08030	9 - 15	91575-04016	5 - 2	G231-001050	9 - 17
900147-08030	11 - 2	92190-08000	15 - 17	G250-000770	10 - 1
900216-06014	11 - 1	92229-08000	10 - 24	G255-000010	10 - 2
900245-04010	7 - 16	92229-12000	10 - 26	G257-000230	13 - 13
900602-00008	2 - 11	A041-000300	4 - 17	G257-000550	2 - 5
900602-00012	9 - 10	A041-000610	4 - 12	G303-000350	15 - 16
900602-00012	15 - 24	A045-000510	5 - 16	G305-000030	15 - 15
900605-00008	4 - 11	A172-001720	4 - 3	G318-000010	5 - 11
900605-00010	4 - 16	A172-002890	1 - 6	G319-000060	5 - 13
900605-00010	15 - 5	A172-002900	1 - 7	G327-000400	5 - 1
900605-00012	9 - 3	A301-000050	13 - 26	G327-000540	5 - 6
900605-00012	15 - 23	A369-000160	10 - 3	G328-000060	5 - 7
900617-00008	10 - 9	A392-000200	10 - 7	G334-000770	14 - 23
900617-00010	15 - 6	A405-000030	7 - 14	G334-001200	10 - 28
91000-10016	15 - 4	A405-000050	7 - 15	G334-001300	5 - 17
91002-08065	10 - 8	A447-000110	14 - 4	G334-001310	5 - 19
91010-12030	9 - 2	C124-000230	5 - 4	G334-001320	14 - 19
91022-10035	4 - 2	C130-000340	1 - 17	G343-000210	6 - 6
91027-08030	4 - 10	C130-000360	10 - 30	G343-000490	6 - 1
91027-10030	4 - 15	C154-000191	7 - 4	G350-000370	6 - 10
91034-08040	2 - 10	C154-000201	7 - 5	G350-000410	6 - 9
91034-10020	13 - 5	C160-001610	2 - 7	G350-000520	6 - 8
91036-05010	7 - 13	C160-001620	14 - 13	G360-002140	6 - 7
91036-05025	6 - 4	C519-002460	9 - 5	G365-000040	1 - 1
91083-08020	2 - 3	C519-003680	9 - 8	G370-000470	6 - 5
91083-08020	13 - 4	C519-006440	6 - 16	G370-001760	6 - 3
91098-08020	10 - 23	C519-006450	7 - 11	J405-003190	15 - 1
91098-12020	10 - 25	C519-006460	7 - 12	J415-000260	15 - 8
91318-06030	14 - 15	C690-000150	7 - 6	J415-000270	15 - 9
91318-08012	1 - 2	C701-000420	2 - 14	J425-002850	16 - 1
91318-08020	13 - 3	C701-000420	13 - 18	J430-001300	14 - 18
91343-05012	9 - 7	C701-000430	13 - 12	J447-001270	10 - 13
91381-04020	13 - 15	E145-000060	5 - 15	J447-001280	10 - 22
91381-04020	14 - 11	E237-000140	11 - 5	J470-004490	4 - 6
91381-04030	13 - 23	E265-000120	11 - 3	J480-000640	3 - 4
91381-04030	14 - 12	E265-000190	10 - 17	J485-000250	13 - 2
91447-04012	13 - 8	E325-000050	10 - 4	J485-000260	13 - 24
91461-04014	5 - 5	E328-000130	11 - 4	J485-000280	2 - 2
91463-05012	10 - 5	E328-000140	10 - 20	J485-000280	13 - 17
91564-04016	6 - 12	E328-000220	10 - 18	J485-000310	13 - 7
91564-04016	14 - 21	E328-000230	10 - 19	J485-000330	13 - 11
91564-04030	4 - 4	G121-000260	9 - 1	J485-000570	14 - 5
91564-05010	4 - 7	G121-000270	9 - 4	J492-000711	13 - 20
91564-05040	4 - 14	G126-000230	1 - 14	J492-000720	3 - 1
91564-05050	6 - 15	G200-000100	1 - 4	J494-000970	13 - 1
91564-06010	1 - 11	G201-000390	1 - 9	J500-001010	13 - 6
91566-04012	14 - 14	G211-000220	9 - 20	K400-002980	11 - 13
91568-05012	6 - 2	G230-000320	9 - 13	K400-003000	11 - 14
91568-05012	14 - 17	G231-000720	9 - 11	K401-000540	11 - 8

Index					
Patrs Number Key No.		Patrs Number Key No.		Patrs Number Key No.	
K403-000220	11 - 15	M707-000330	8 - 9	V420-003070	13 - 14
M040-000480	13 - 16	M707-000370	8 - 18	V420-003070	14 - 9
M102-000531	4 - 8	M707-000380	8 - 19	V420-003200	14 - 1
M108-000030	6 - 14	M707-000400	8 - 21	V420-003510	13 - 22
M109-000140	5 - 8	M707-000880	8 - 8	V420-003510	14 - 10
M109-000160	5 - 9	M707-000900	8 - 14	V420-003920	10 - 11
M109-000210	5 - 10	M707-000910	8 - 20	V420-003930	10 - 16
M109-000410	5 - 12	V104-001740	9 - 14	V475-005700	11 - 10
M111-000460	6 - 13	V106-000110	10 - 21	V475-005800	4 - 18
M111-001400	7 - 9	V144-000440	13 - 21	V475-008240	12 - 2
M111-001410	7 - 10	V144-000530	5 - 18	V475-008650	7 - 17
M112-000010	5 - 14	V144-000610	4 - 13	V475-008660	14 - 25
M126-000000	7 - 7	V150-003140	7 - 2	V475-008670	7 - 1
M126-000040	7 - 8	V150-003140	14 - 24	V475-008710	11 - 9
M305-000050	4 - 1	V204-001090	1 - 8	V476-000460	11 - 11
M308-000250	6 - 19	V204-001090	2 - 4	V481-000460	15 - 12
M308-000520	6 - 11	V204-001090	6 - 18	V486-000240	15 - 13
M384-000020	15 - 20	V204-001090	7 - 3	V490-000810	1 - 10
M384-000030	15 - 21	V204-001090	10 - 29	V490-000820	1 - 3
M386-000440	15 - 19	V204-001090	11 - 6	V490-001110	10 - 27
M386-000580	15 - 25	V204-001090	14 - 3	V495-001660	11 - 12
M386-000590	14 - 20	V204-001600	14 - 8	V495-002000	9 - 18
M406-001050	2 - 13	V205-001120	1 - 16	V495-002500	9 - 19
M409-001130	2 - 1	V205-001120	3 - 2	V495-002510	1 - 13
M415-000490	13 - 25	V205-001120	12 - 1	V495-002510	15 - 11
M416-000010	9 - 6	V205-001120	13 - 9	V500-000020	10 - 6
M416-000040	10 - 12	V205-001120	16 - 2	V592-000170	4 - 9
M470-002970	14 - 7	V205-001170	1 - 12	V649-000130	14 - 6
M470-003050	13 - 10	V205-001170	2 - 6	X504-006320	8 - 13
M470-003060	14 - 2	V205-001170	9 - 16	X505-007550	8 - 23
M470-003070	6 - 17	V205-001170	15 - 7	X505-007560	8 - 24
M470-003080	2 - 9	V206-000580	3 - 3	X505-007571	8 - 25
M601-000170	1 - 15	V206-000580	15 - 10	X505-007630	8 - 29
M608-000040	1 - 5	V207-000100	9 - 9	X505-007650	8 - 30
M700-000010	10 - 14	V207-000100	15 - 22	X505-007820	8 - 26
M703-000020	4 - 5	V240-000240	15 - 18	X505-007830	8 - 27
M703-000020	4 - 5	V262-000190	5 - 3	X505-007840	8 - 28
M704-000650	8 - 3	V262-000190	14 - 22	X524-005370	8 - 11
M704-000660	8 - 4	V264-000220	2 - 8	X524-005400	8 - 12
M704-000670	8 - 5	V264-000220	11 - 7		
M704-000680	8 - 6	V264-000220	13 - 19		
M704-001400	8 - 15	V265-000290	9 - 12		
M705-001000	8 - 22	V265-000290	10 - 10		
M707-000050	8 - 7	V265-000310	15 - 14		
M707-000060	8 - 16	V265-000450	2 - 12		
M707-000070	8 - 17	V324-000010	14 - 16		
M707-000090	8 - 1	V404-000140	15 - 2		
M707-000100	8 - 2	V404-000170	15 - 3		
M707-000320	8 - 10	V420-003050	10 - 15		

YAMABIKO CORPORATION

7-2 SUEHIROCHO 1-CHOME, OHME, TOKYO 198-8760, JAPAN
PHONE: 81-428-32-6118. FAX: 81-428-32-6145.

shindaiwa[®]

15Eb
No.07-177