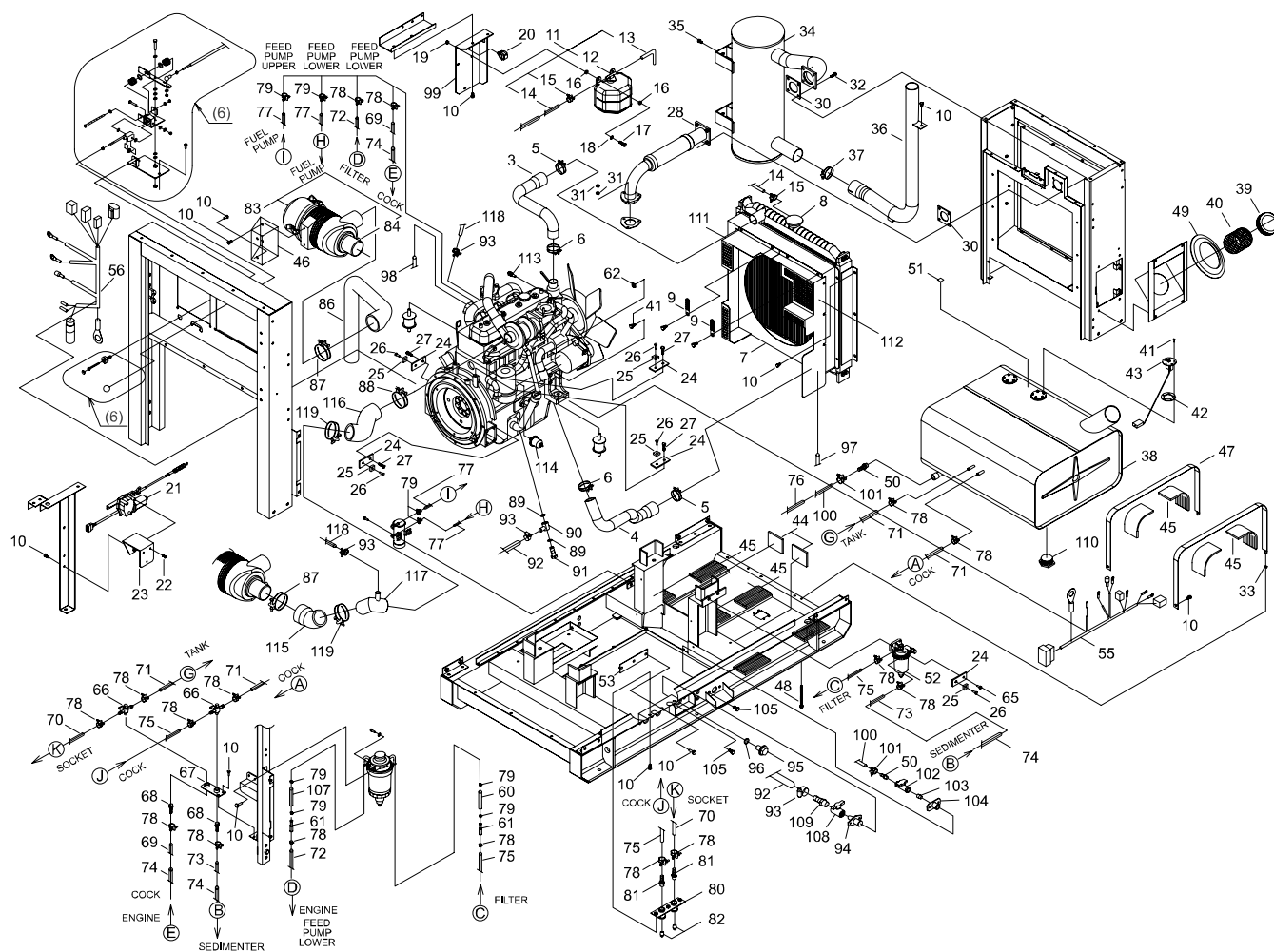




# **PARTS CATALOGUE**

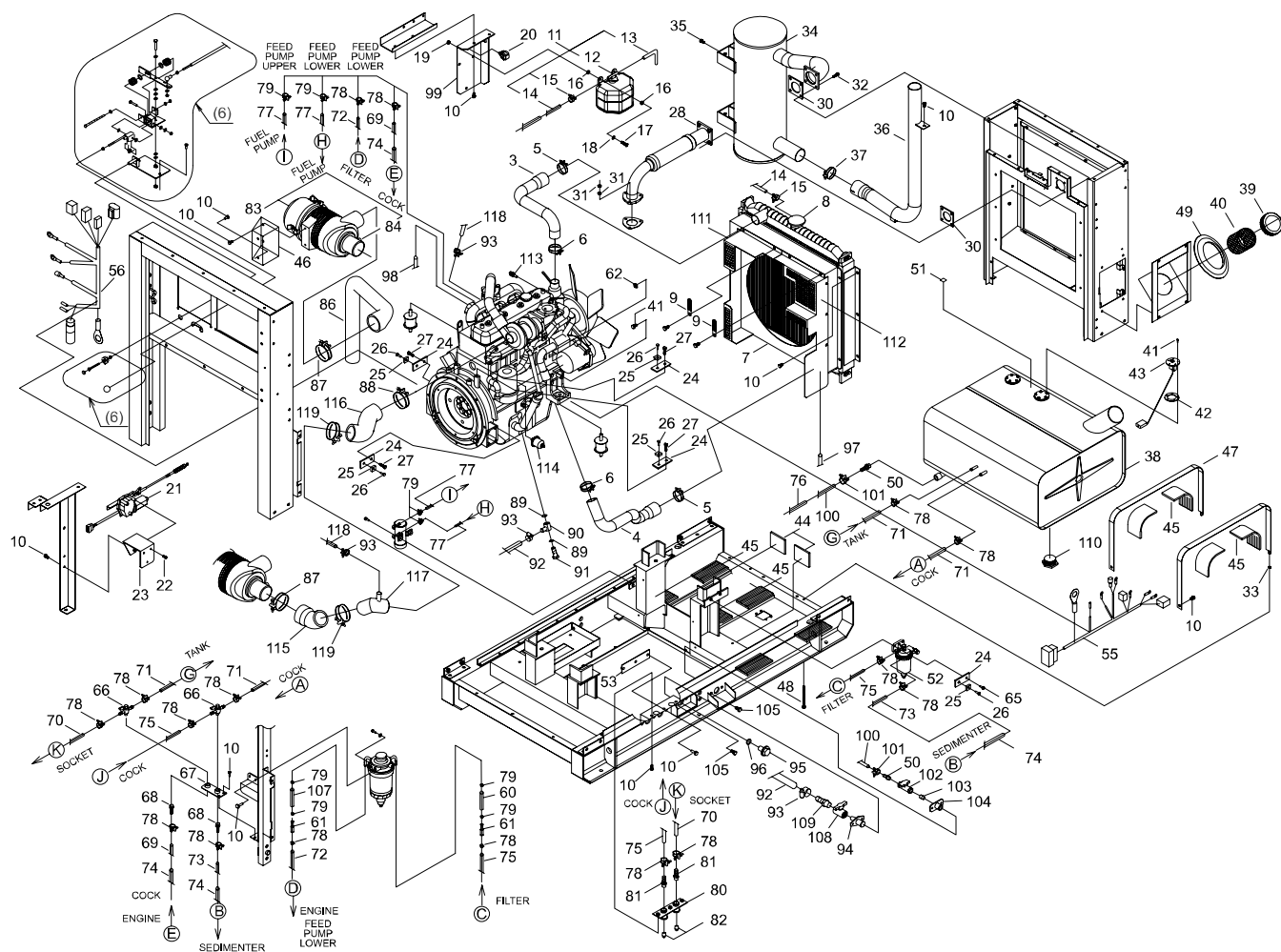
## **DGA37C**



KEY	LV	PART NUMBER	Q'TY	DESCRIPTION	REMARKS	NOTE1	NOTE2
3		G203-000240	1	RADIATOR HOSE			
4		G203-000250	1	RADIATOR HOSE			
5		V495-001620	2	HOSE CLAMP			
6		V495-001630	2	HOSE CLAMP			
7		G200-000050	1	RADIATOR			
8		M608-000000	1	RADIATOR CAP			
9		V490-000810	2	CORD CLAMP			
10		V205-001170	27	BOLT,8	M8*20-SPW		
11		G125-000090	1	SUB TANK ASSY			
12	+	G125-000100	1	SUB TANK			
13	+	K400-001640	1	HOSE			
14	+	K400-001650	1	HOSE			
15	+	V495-001640	2	HOSE CLAMP			
16		J211-000160	6	BUSH			
17		900100-08030	3	BOLT 8*30	8*30		
18		900602-00008	3	WASHER 8	8.4*17*1.6		
19		900502-00008	3	NUT 8 (3N)	3N8		
20		V490-000790	1	CLAMP			
21		I181900-1902	1	STOP MOTOR			
22		V254-000110	3	SCREW			
23		C519-004010	1	STAY			
24		C519-002450	5	STAY			
25		M416-000010	5	TIE MOUNT			
26		91343-05012	5	SCREW			
27		900147-10020	5	BOLT	10*20 SW,W		
28		G231-000230	1	FLEXIBLE TUBE			
30		V104-001660	5	GASKET			
31		900504-00008	6	NUT 8B	8B		
32		91024-08040	4	BOLT SW			
33		V265-000290	2	FLANGE NUT			
34		A300-001400	1	MUFFLER			
35		V205-001120	4	BOLT,8	BM-8*20 W SW		
36		G231-000310	1	TAIL PIPE			
37		V495-001650	1	HOSE CLAMP			
38		G250-000320	1	FUEL TANK			
39		E111-000110	1	TANK CAP			
40		K329-000040	1	STRAINER			
41		91564-05010	11	SCREW SPW			
42		K221-000000	2	PACKING			
43		E325-000040	1	FUEL GAUGE			
44		V420-003020	2	PAD			
45		V420-003030	10	PAD			
46		G211-000360	1	STAY,CLEANER			
47		A392-000090	2	TANK BAND			
48		V205-000630	2	BOLT			
49		V145-000320	1	TANK BUSH			
50		V187-000090	2	NIPPLE			
51		M416-000040	1	TIE MOUNT			
52		G260-000050	1	WATER SEDIMENTER			
53		J470-002240	1	COVER PLATE			
55		G031-001960	1	WIRING HARNESS			
56		C130-000210	1	WIRING HARNESS ASSY			
60		K400-001570	1	HOSE			
61		V186-000380	2	JOINT PAIPE			
62		V264-000220	1	FLANGE NUT			
65		91024-10030	2	BOLT	BM-10*30/W,SW		
66		E265-000110	2	COCK			
67		C519-004060	1	STAY			

# 1. ENGINE, RADIATOR

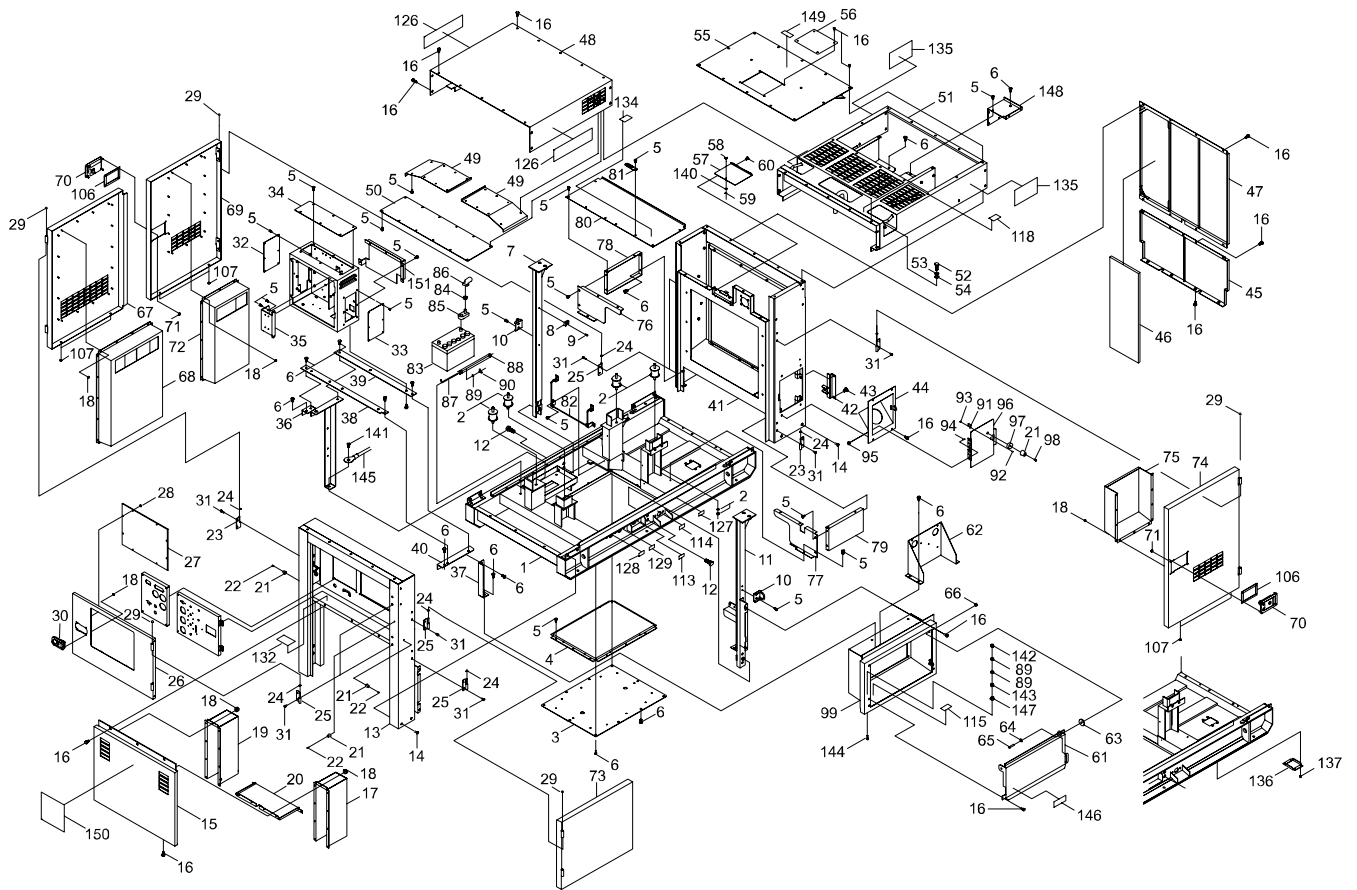
DGA37C



KEY	LV	PART NUMBER	Q'TY	DESCRIPTION	REMARKS	NOTE1	NOTE2
68		V187-000100	2	NIPPLE			
69		K401-000460	1	HOUE			
70		K401-000430	1	HOSE			
71		K401-000420	2	HOSE			
72		K401-000360	1	HOSE			
73		K401-000330	1	HOSE			
74		V475-005300	2	TUBE			
75		K401-000440	2	HOSE			
76		V475-005320	1	TUBE			
77		V471-002900	2	HOSE			
78		V495-001660	16	HOSE CLAMP			
79		V495-001670	8	HOSE CLAMP			
80		C153-000050	1	SOCKET			
81		V187-000110	2	NIPPLE			
82		E328-000110	2	DRAIN PLUG			
84		M609-000000	1	INDICATOR			
86		G213-000120	1	AIR HOSE			
87		V495-001680	2	HOSE CLAMP			
88		V495-001690	1	HOSE CLAMP			
89		V581-000370	2	O RING			
90		K313-000030	1	SOCKET			
91		V242-000260	1	NIPPLE			
92		K405-000200	1	HOSE			
93		V495-001710	4	HOSE CLAMP			
94		C153-000090	1	SOCKET			
95		E328-000120	1	DRAIN PLUG			
96		V581-000380	1	O RING			
97		K400-001660	1	HOSE			
98		K400-001670	1	HOSE			
99		G126-000280	1	BRACKET,TANK			
100		V471-002910	1	HOSE			
101		V495-001720	2	HOSE CLAMP			
102		E265-000140	1	DRAIN COCK			
103		V187-000120	1	NIPPLE			
104		C153-000080	1	SOCKET			
105		V206-000590	4	BOLT,10	M10*25-SPW		
107		K400-001530	1	HOSE			
108		E265-000130	1	COCK			
109		V187-000130	1	NIPPLE			
110		V162-000540	1	PLUG			
111		A172-002470	1	COVER,FAN			
112		A172-002480	1	COVER,FAN			
113		G365-000030	1	GAUGE			
115		G213-000130	1	AIR HOSE			
116		G213-000140	1	AIR HOSE			
117		V186-000390	1	JYOINT PIPE			
118		K404-000070	1	AIR HOSE			
119		V495-001700	2	HOSE CLAMP			

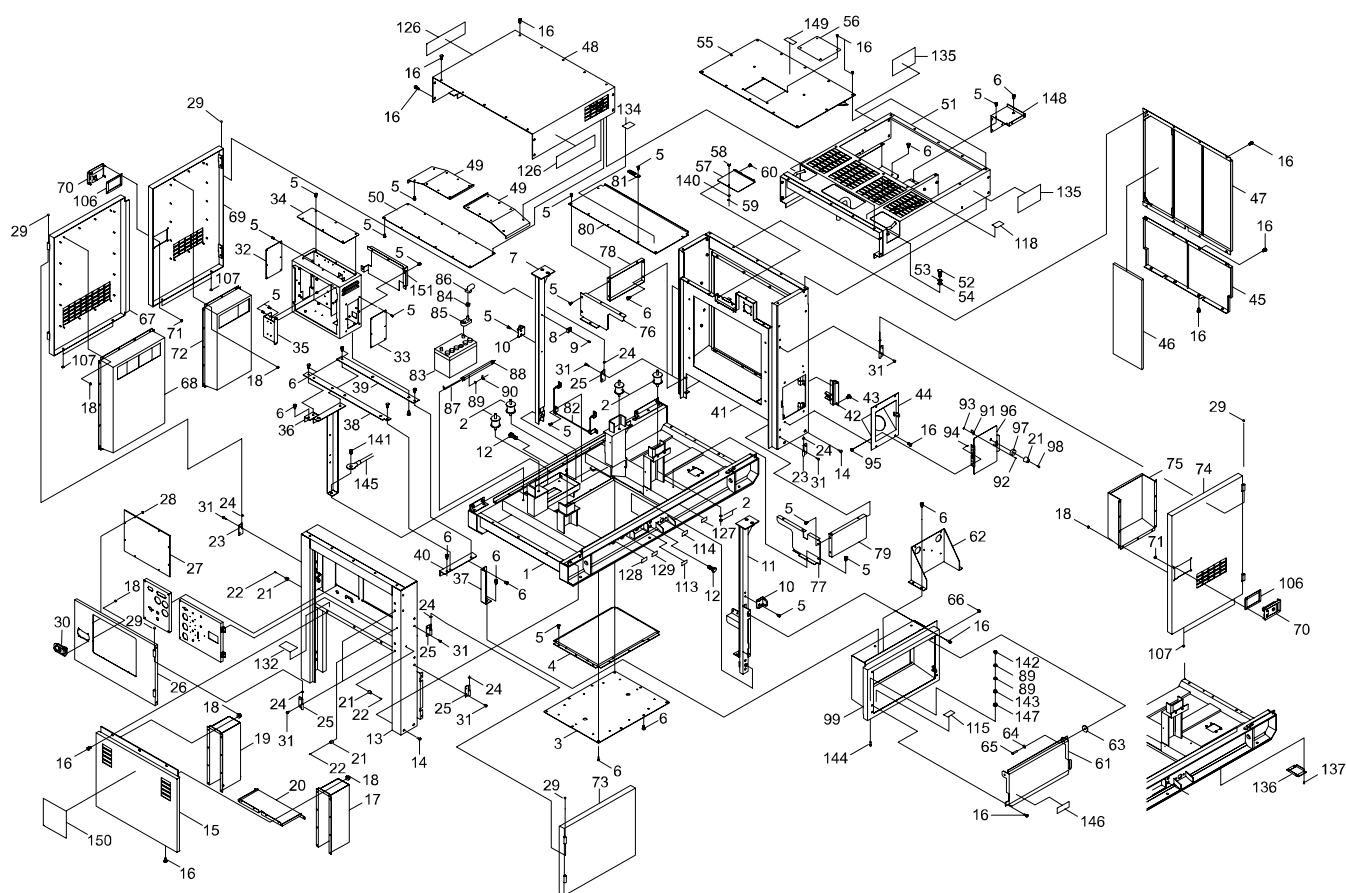
## 2. FRAME, COVER

DGA37C



KEY	LV	PART NUMBER	Q'TY	DESCRIPTION	REMARKS	NOTE1	NOTE2
1		J405-001220	1	BED			
2		V405-000000	4	AV RUBBER			
3		J470-004940	1	COVER			
4		J470-002070	1	PLATE COVER			
5		V204-001090	107	BOLT FT SW			
6		V205-001170	34	BOLT,8	M8*20-SPW		
7		J415-000250	1	STAY,BONNET			
8		M416-000010	2	TIE MOUNT			
9		91343-05012	2	SCREW			
10		G257-000620	2	STOPPER			
11		J415-000240	1	STAY,BONNET			
12		91024-12030	4	BOLT	BM-12*30/W,SW		
13		J491-000880	1	FRONT COVER			
14		91034-10020	8	BOLT SPW			
15		J425-000600	1	FRONT PLATE			
16		V205-001120	66	BOLT,8	BM-8*20 W SW		
17		G122-000320	1	DUCT			
18		V264-000220	73	FLANGE NUT			
19		G122-000330	1	DUCT			
20		J470-002080	1	DUCT PLATE			
21		V420-003070	5	STAND RUBBER			
22		91381-04020	4	SCREW TAPPING			
23		J485-000530	4	HINGE			
24		V375-000380	10	COLLAR			
25		J485-000540	6	HINGE			
26		M402-000690	1	DOOR,FRONT			
27		J425-000740	1	PANEL			
28		V263-000330	8	FLANGE NUT			
29		V162-000500	10	PLAG			
30		C701-000420	1	LOCK COVER			
31		91144-08020	20	SCREW BUTTON			
32		M417-000040	1	BOX COVER			
33		M417-000260	1	COVER,BOX			
34		M417-000270	1	COVER,BOX			
35		C519-005730	1	STAY			
36		M413-000000	1	STAND BAR			
37		J465-000330	1	STAND			
38		C519-005620	1	STAY			
39		C519-005630	1	STAY			
40		C519-005690	1	STAY			
41		J491-000890	1	REAR COVER			
42		C618-000190	1	COVER STAY			
43		91318-08020	2	SCREW TRUSS			
44		J470-006390	1	COVER			
45		M415-000130	1	REAR PLATE			
46		A322-000100	1	HEAT INSULATOR			
47		M415-000120	1	REAR PLATE			
48		J410-000840	1	TOP COVER FRONT			
49		M418-000020	2	BAFFLE PLATE			
50		J470-002100	1	DUCT PLATE			
51		J410-003000	1	BONNET			
52		91000-16040	4	BOLT	B-16*40		
53		900605-00016	4	WASHER, SPRING 16	16		
54		92203-16000	4	WASHER			
55		J480-000720	1	LID,COVER			
56		J480-000140	1	CHECK PLATE			
57		J480-000150	1	CHECK COVER			
58		V299-000480	1	KNOB COMP			

## 2. FRAME, COVER

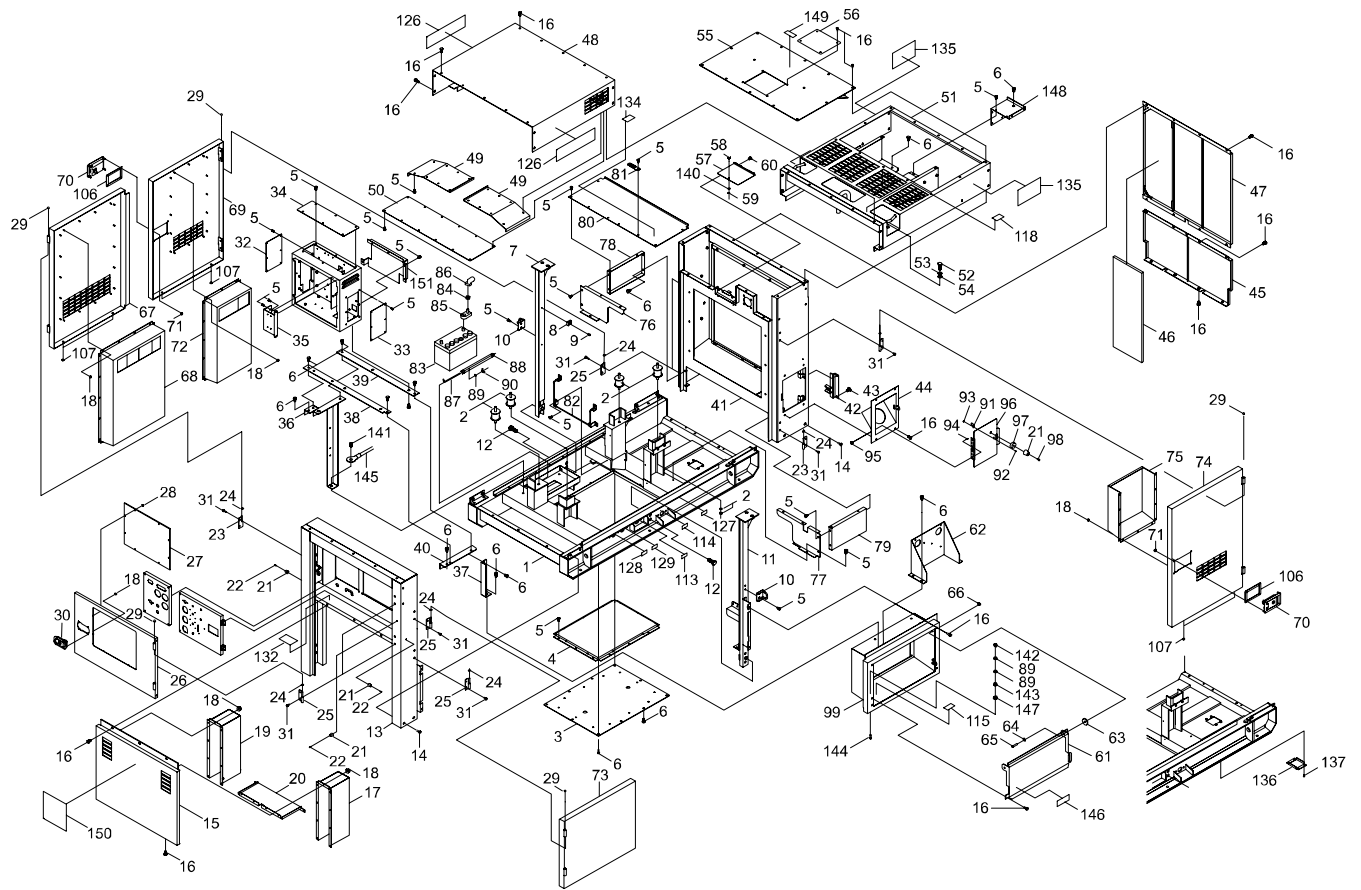
**DGA37C**



KEY	LV	PART NUMBER	Q'TY	DESCRIPTION	REMARKS	NOTE1	NOTE2
59		V583-000230	1	U RING			
60		91036-05012	4	BOLT SW			
61		J470-004960	1	COVER			
62		C519-005740	1	STAY			
63		V420-003080	2	BUSH RUBBER			
64		V375-000410	2	COLLAR			
65		91024-10030	2	BOLT	BM-10*30/W,SW		
66		900500-00010	2	NUT 10	10*P1.5		
67		M404-000230	1	LEFT DOOR FRONT			
68		G122-000350	1	DUCT			
69		M404-000240	1	LEFT DOOR REAR			
70		C701-000440	2	LOCK COVER			
71		V265-000290	8	FLANGE NUT			
72		G122-000360	1	DUCT			
73		M406-001030	1	DOOR,RIGHT			
74		M406-000160	1	RIGHT DOOR REAR			
75		G122-000370	1	DUCT			
76		J470-004980	1	COVER			
77		J470-004970	1	COVER			
78		J470-004990	1	COVER			
79		J470-005000	1	COVER			
80		J470-005010	1	COVER			
81		V490-000810	1	CORD CLAMP			
82		K596-000370	1	HOLDER,HOSE			
83		V481-000150	1	BATTERY 95D31R			
84		V265-000310	1	NUT			
85		V486-000240	1	TERMINAL			
86		G305-000030	1	TERMINAL CAP			
87		V240-000140	2	BOLT BATTERY			
88		G303-000370	1	HOLDER,BATTERY			
89		900602-00008	4	WASHER 8	8.4*17*1.6		
90		92190-08000	2	WING NUT			
91		C390-000010	1	TONGUE			
92		91341-03010	2	SCREW-SW	M3*10		
93		V261-000010	2	FLANGE NUT			
94		91564-04012	6	SCREW SW			
95		V262-000190	6	FLANGE NUT			
96		J470-002270	1	FUEL COVER			
97		V420-003100	1	STAND RUBBER			
98		91341-04025	1	SCREW SW			
99		J491-000900	1	SIDE COVER			
106		V541-000350	2	SHEET			
107		V162-000520	6	PLUG			
113		M704-000190	1	LABEL INST			
114		M704-000200	1	LABEL INST			
115		M704-001400	1	LABEL INST			
118		X505-004630	1	LABEL CAUTION			
126		X504-006310	2	LABEL BRAND			
127		M704-000780	1	LABEL INST			
128		M704-000790	1	LABEL INST			
129		M704-000800	1	LABEL INST			
132		M704-000840	1	LABEL INST			
134		M704-000830	1	LABEL INST			
135		M705-000260	2	LABEL OUTPUT			
136		J470-006420	1	COVER			
137		91143-06016	4	SCREW BUTTON			
140		V345-000030	1	WASHER			
141		91024-08035	1	BOLT	BM-8*35/W,SW		

## 2. FRAME, COVER

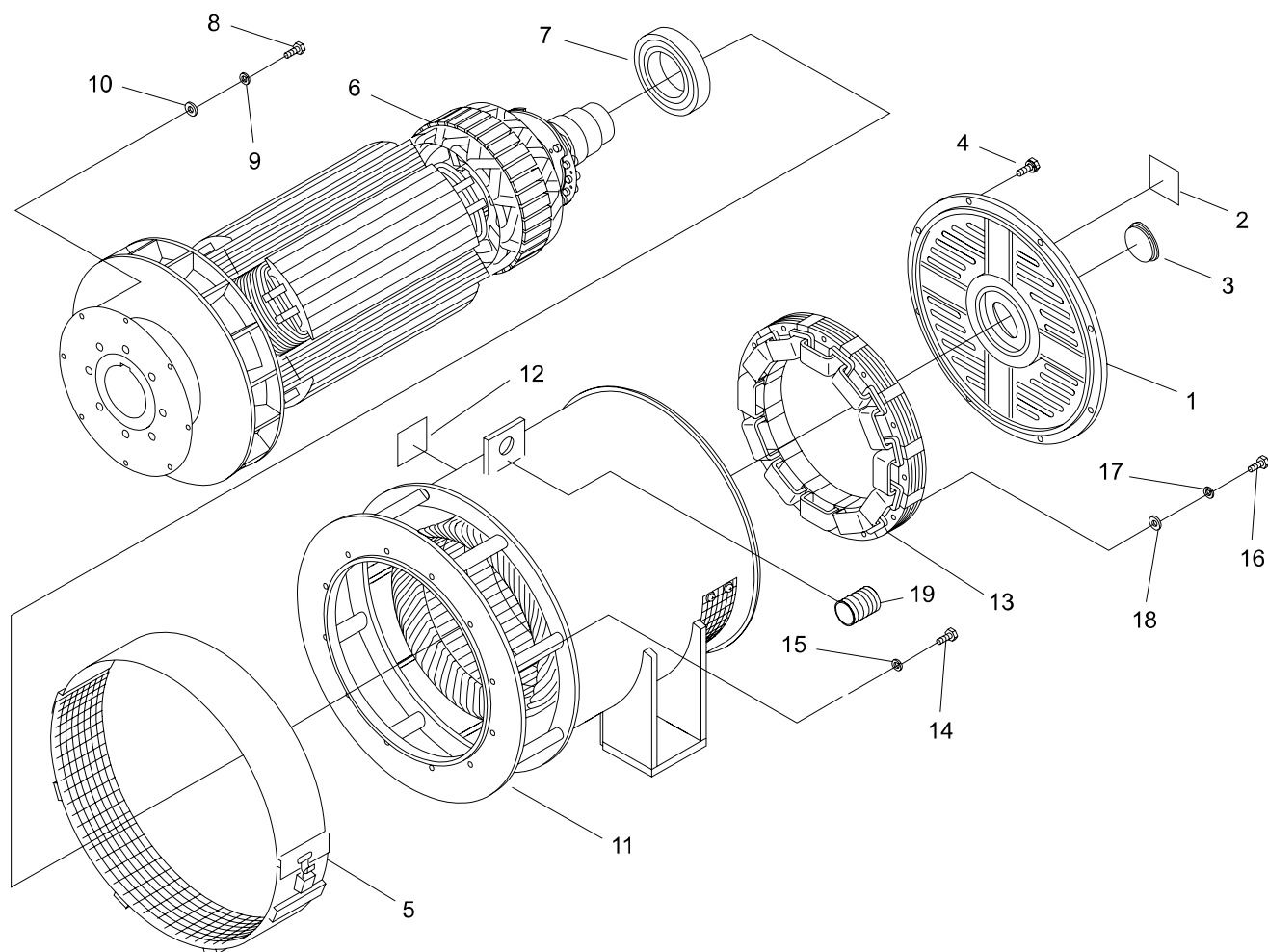
DGA37C



KEY	LV	PART NUMBER	Q'TY	DESCRIPTION	REMARKS	NOTE1	NOTE2
142		900500-00008	1	NUT 8	8*P1.25		
143		900605-00008	1	WASHER, SPRING 8	8		
144		91024-08040	1	BOLT SW			
145		M383-000260	1	LEAD			
146		X505-004640	1	LABEL CAUTION			
147		V265-000290	1	FLANGE NUT			
148		J470-006400	1	COVER			
149		X505-004650	1	LABEL CAUTION			
150		X505-004660	1	LABEL CAUTION			
151		M470-000350	1	TERMINAL COVER			

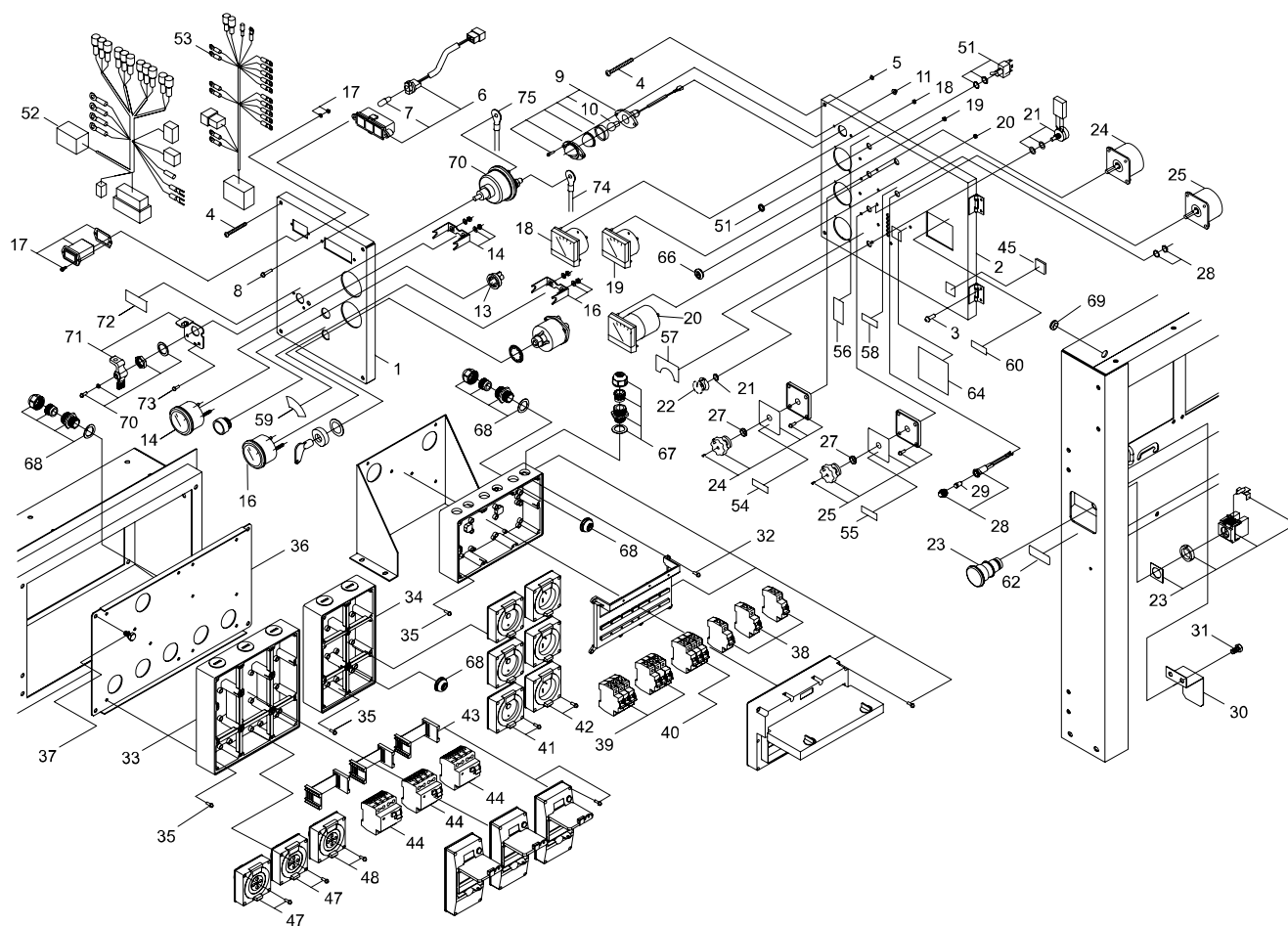
### 3. GENERATOR

DGA37C



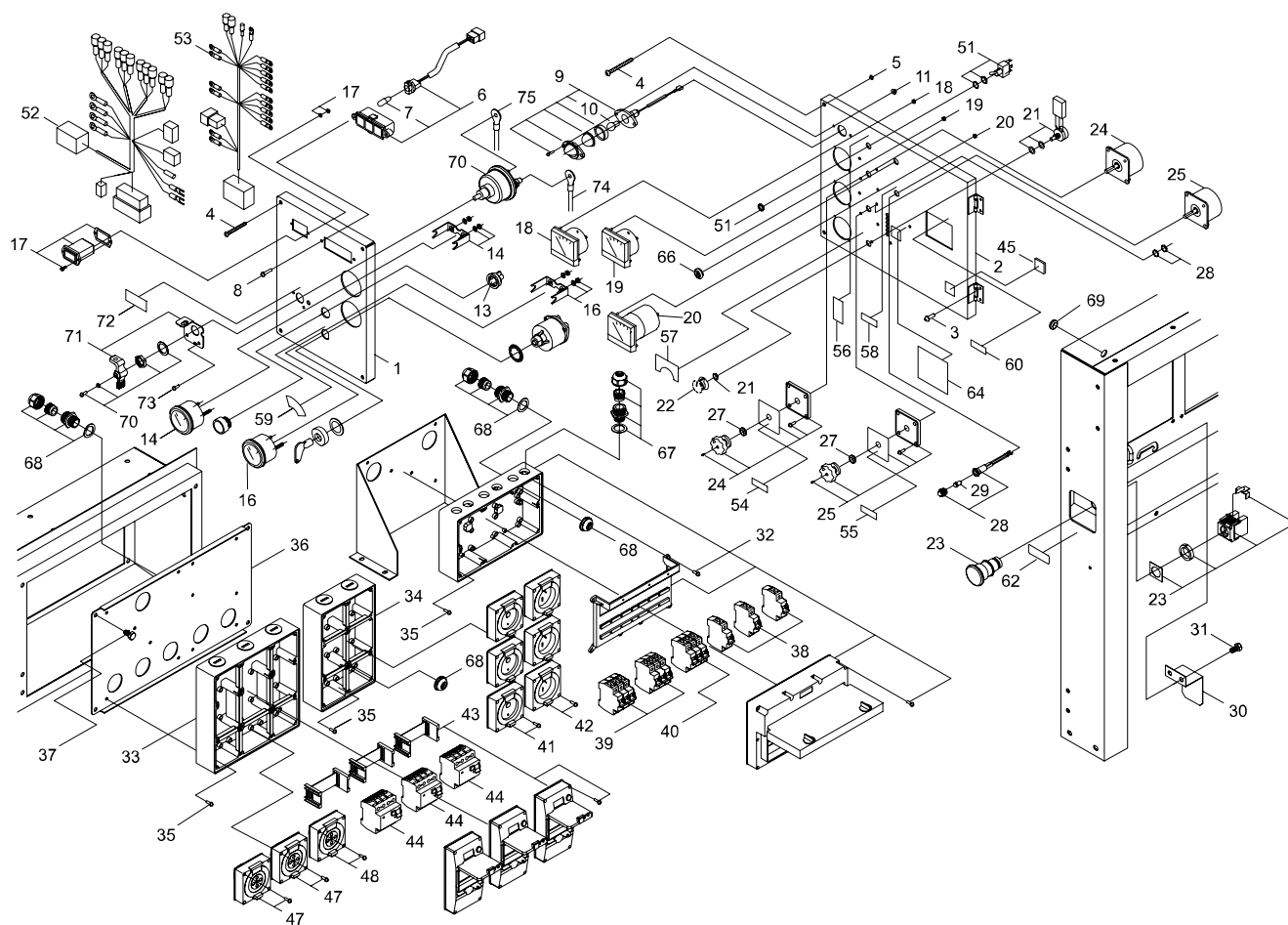
KEY	LV	PART NUMBER	Q'TY	DESCRIPTION	REMARKS	NOTE1	NOTE2
1		M305-000040	1	REAR BRACKET			
2		M703-000000	1	LABEL THERMOMETER			
3		V494-000350	1	CAP			
4		V205-000600	6	BOLT SW			
5		A172-001540	1	FAN COVER			
6		M102-000060	1	ROTOR			
7		V592-000140	1	BALL BEARING			
8		91026-08035	6	BOLT			
9		900605-00008	6	WASHER, SPRING 8	8		
10		900602-00008	6	WASHER 8	8.4*17*1.6		
11		M106-000150	1	STATOR			
12		M703-000010	1	LABEL THERMOMETER			
13		M106-000060	1	STATOR			
14		91026-10035	8	BOLT			
15		900605-00010	8	WASHER, SPRING 10	10		
16		V204-000870	3	BOLT			
17		V304-000350	3	SPRING WASHER			
18		V345-000040	3	WASHER			
19		V475-005960	1	TUBE			

#### 4. CONTROL PANEL

**DGA37C**

KEY	LV	PART NUMBER	Q'TY	DESCRIPTION	REMARKS	NOTE1	NOTE2
1		C160-001281	1	PANEL,OPERATION			
2		C160-001090	1	PANEL,OPERATION			
3		91564-04010	4	SCREW SPW			
4		91318-06030	6	SCREW TRUSS			
5		V324-000010	2	WASHER			
6		G385-000040	1	MONITOR ASSY			
7	+	G328-000020	3	LAMP			
8		91374-04016	2	SCREW TAPPING			
9		M306-000010	1	PLATE LAMP SUB ASSY			
10	+	G328-000030	1	LAMP			
11		V262-000190	2	FLANGE NUT			
13		G328-000040	1	LAMP			
14		M109-000210	1	METER (COOLANT TEMP)			
16		G318-000010	1	FUEL METER			
17		G319-000060	1	HOUR METER			
18		M109-000140	1	METER (V)			
19		M109-000240	1	METER			
20		M109-000120	1	METER			
21		G314-000140	1	VARIABLE RESSISTOR			
22		E145-000060	1	DIAL			
23		G334-000770	1	BUTTON SWITCH			
24		G334-001310	1	SWITCH			
25		G334-001300	1	SWITCH			
27		V144-000530	2	GROMMET			
28		G327-000300	1	LAMP BRACKET			
29		G328-000060	1	LAMP			
30		M470-001860	1	COVER			
31		V204-001090	2	BOLT FT SW			
32		J430-000360	1	BRAKER BOX			
33		J430-000370	1	CONTROL BOX			
34		J430-000380	1	CONTROL BOX			
35		91564-04016	18	SCREW SPW			
36		J491-001730	1	BONNET			
37		V205-001120	4	BOLT,8	BM-8*20 W SW		
38		M126-000040	3	BREAKER			
39		M126-000010	2	BREAKER	4CB332/6 3P3E32A		
40		M126-000000	1	BREAKER	4CB320/6 3P3E20A		
41		M111-000440	3	SOCKET			
42		C154-000201	3	RECEPTACLE			
43		A405-000000	3	BREAKER COVER			
44		M111-001110	3	BREAKER	4RC440/30 4P4E		
45		M416-000040	3	TIE MOUNT			
47		C154-000210	2	SOCKET			
48		C154-000191	1	RECEPTACLE			
51		A045-000510	1	TOGGLE SWITCH			
52		G031-002330	1	WIRING HARNESS ASSY			
53		G360-000530	1	WIRING HARNESS			
54		M707-000330	1	LABEL,INST			
55		M707-000320	1	LABEL,INST			
56		M704-000660	1	LABEL INST			
57		M704-000670	1	LABEL INST			
58		M704-000650	1	LABEL INST			
59		M704-000690	1	LABEL INST			
60		M704-000680	1	LABEL INST			
62		M707-000070	1	LABEL INST			
64		X524-002850	1	LABEL DESIGN			

#### 4. CONTROL PANEL

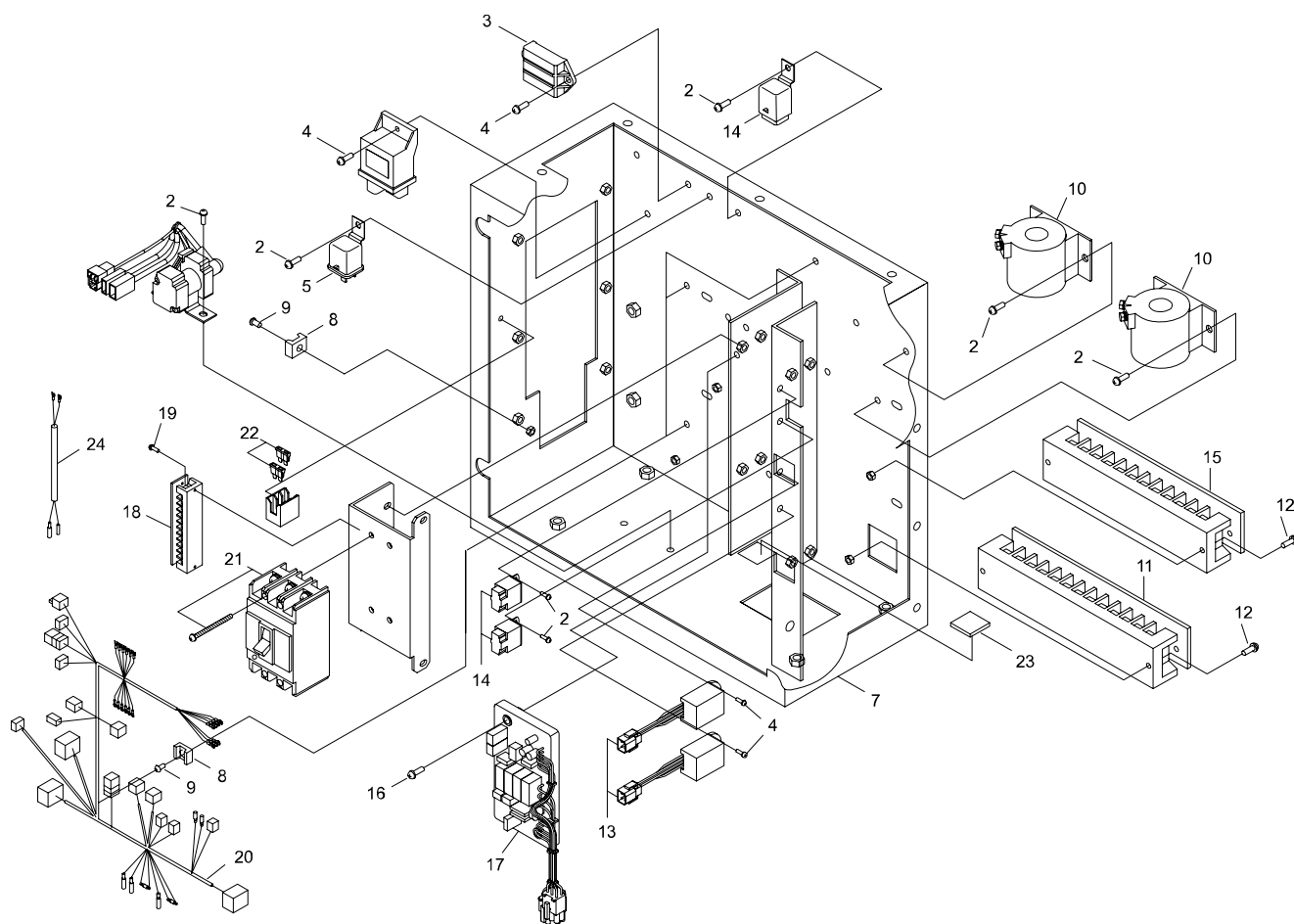
**DGA37C**



KEY	LV	PART NUMBER	Q'TY	DESCRIPTION	REMARKS	NOTE1	NOTE2
66		V144-000460	1	GROMMET			
67		V139-000050	6	CLAMP			
68		V139-000040	8	CLAMP			
69		V145-000450	1	GROMMET			
70		G334-000860	1	BATTERY SWITCH			
71		J141-000110	1	SWITCH LEVER SET			
72		M707-000060	1	LABEL INST			
73		91568-05012	2	SCREW SLPW			
74		M383-000250	1	LEAD			
75		M383-000270	1	LEAD			

## 5. CONTROL BOX

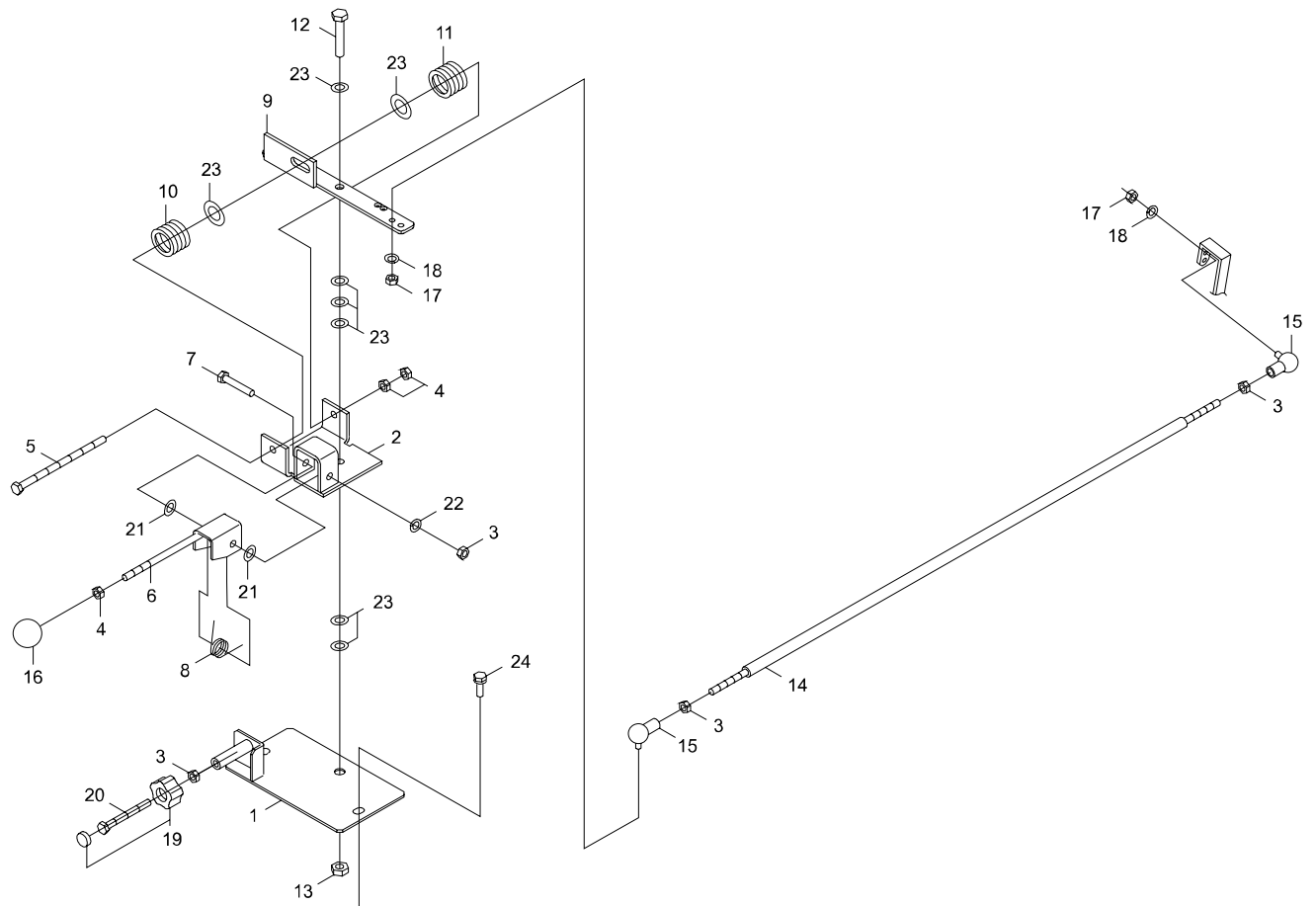
DGA37C



KEY	LV	PART NUMBER	Q'TY	DESCRIPTION	REMARKS	NOTE1	NOTE2
2		91568-05012	10	SCREW SLPW			
3		G370-000500	1	CONTROLLER			
4		91568-05016	5	SCREW SLPW			
5		G343-000110	1	RELAY			
7		J430-000350	1	CONTROL BOX			
8		M416-000010	4	TIE MOUNT			
9		91343-05012	4	SCREW			
10		M108-000010	2	CT			
11		M308-000330	1	TERMINAL BLOCK			
12		91564-05025	4	SCREW SPW			
13		G370-000470	2	PRINT CIRCUIT			
14		G343-000490	3	RELAY			
15		M308-000320	1	TERMINAL BLOCK			
16		91564-04020	2	SCREW SPW			
17		G370-000520	1	PRINTED CIRCUIT			
18		M308-000250	1	TERMINAL BLOCK			
19		91564-04016	2	SCREW SPW			
20		G031-002340	1	WIRING HARNESS			
21		M111-000470	1	BREAKER			
22		G350-000230	2	FUSE	10A		
23		M416-000040	1	TIE MOUNT			
24		G362-001060	1	HARNESS,WIRE			

## 6. THROTTLE LEVER

DGA37C



KEY	LV	PART NUMBER	Q'TY	DESCRIPTION	REMARKS	NOTE1	NOTE2
1		C802-000030	1	HANDLE BASE			
2		C519-002560	1	JOINT PLATE			
3		900500-00008	4	NUT 8	8*P1.25		
4		900502-00008	3	NUT 8 (3N)	3N8		
5		V205-000870	1	BOLT			
6		C453-000380	1	THROTTLE LEVER			
7		900100-08065	1	BOLT 8*65	8*65		
8		V452-001050	1	COIL SPRING			
9		C519-002570	1	BAR			
10		V450-001260	1	COIL SPRING			
11		V450-001270	1	COIL SPRING			
12		900100-10040	1	BOLT 10*40	10*40		
13		900500-00010	1	NUT 10	10*P1.5		
14		C532-000230	1	CONNECTING ROD			
15		J221-000010	2	BALL JOINT			
16		G179-000130	1	GRIP			
17		900500-00006	2	NUT 6	6		
18		900605-00006	2	WASHER, SPRING 6	6		
19		M613-000010	1	KNOB			
20		V205-000630	1	BOLT			
21		900602-00008	2	WASHER 8	8.4*17*1.6		
22		900605-00008	1	WASHER, SPRING 8	8		
23		900602-00010	8	WASHER 10(10.5*21*2)	10.5*21*2		
24		V205-001170	2	BOLT,8	M8*20-SPW		

Index					
Patrs Number	Key No.	Patrs Number	Key No.	Patrs Number	Key No.
900100-08030	1 - 17	91564-04020	5 - 16	E328-000120	1 - 95
900100-08065	6 - 7	91564-05010	1 - 41	G031-001960	1 - 55
900100-10040	6 - 12	91564-05025	5 - 12	G031-002330	4 - 52
900147-10020	1 - 27	91568-05012	4 - 73	G031-002340	5 - 20
900500-00006	6 - 17	91568-05012	5 - 2	G122-000320	2 - 17
900500-00008	2 - 142	91568-05016	5 - 4	G122-000330	2 - 19
900500-00008	6 - 3	92190-08000	2 - 90	G122-000350	2 - 68
900500-00010	2 - 66	92203-16000	2 - 54	G122-000360	2 - 72
900500-00010	6 - 13	A045-000510	4 - 51	G122-000370	2 - 75
900502-00008	1 - 19	A172-001540	3 - 5	G125-000090	1 - 11
900502-00008	6 - 4	A172-002470	1 - 111	G125-000100	1 - 12
900504-00008	1 - 31	A172-002480	1 - 112	G126-000280	1 - 99
900602-00008	1 - 18	A300-001400	1 - 34	G179-000130	6 - 16
900602-00008	2 - 89	A322-000100	2 - 46	G200-000050	1 - 7
900602-00008	3 - 10	A392-000090	1 - 47	G203-000240	1 - 3
900602-00008	6 - 21	A405-000000	4 - 43	G203-000250	1 - 4
900602-00010	6 - 23	C130-000210	1 - 56	G211-000360	1 - 46
900605-00006	6 - 18	C153-000050	1 - 80	G213-000120	1 - 86
900605-00008	2 - 143	C153-000080	1 - 104	G213-000130	1 - 115
900605-00008	3 - 9	C153-000090	1 - 94	G213-000140	1 - 116
900605-00008	6 - 22	C154-000191	4 - 48	G231-000230	1 - 28
900605-00010	3 - 15	C154-000201	4 - 42	G231-000310	1 - 36
900605-00016	2 - 53	C154-000210	4 - 47	G250-000320	1 - 38
91000-16040	2 - 52	C160-001090	4 - 2	G257-000620	2 - 10
91024-08035	2 - 141	C160-001281	4 - 1	G260-000050	1 - 52
91024-08040	1 - 32	C390-000010	2 - 91	G303-000370	2 - 88
91024-08040	2 - 144	C453-000380	6 - 6	G305-000030	2 - 86
91024-10030	1 - 65	C519-002450	1 - 24	G314-000140	4 - 21
91024-10030	2 - 65	C519-002560	6 - 2	G318-000010	4 - 16
91024-12030	2 - 12	C519-002570	6 - 9	G319-000060	4 - 17
91026-08035	3 - 8	C519-004010	1 - 23	G327-000300	4 - 28
91026-10035	3 - 14	C519-004060	1 - 67	G328-000020	4 - 7
91034-10020	2 - 14	C519-005620	2 - 38	G328-000030	4 - 10
91036-05012	2 - 60	C519-005630	2 - 39	G328-000040	4 - 13
91143-06016	2 - 137	C519-005690	2 - 40	G328-000060	4 - 29
91144-08020	2 - 31	C519-005730	2 - 35	G334-000770	4 - 23
91318-06030	4 - 4	C519-005740	2 - 62	G334-000860	4 - 70
91318-08020	2 - 43	C532-000230	6 - 14	G334-001300	4 - 25
91341-03010	2 - 92	C618-000190	2 - 42	G334-001310	4 - 24
91341-04025	2 - 98	C701-000420	2 - 30	G343-000110	5 - 5
91343-05012	1 - 26	C701-000440	2 - 70	G343-000490	5 - 14
91343-05012	2 - 9	C802-000030	6 - 1	G350-000230	5 - 22
91343-05012	5 - 9	E111-000110	1 - 39	G360-000530	4 - 53
91374-04016	4 - 8	E145-000060	4 - 22	G362-001060	5 - 24
91381-04020	2 - 22	E265-000110	1 - 66	G365-000030	1 - 113
91564-04010	4 - 3	E265-000130	1 - 108	G370-000470	5 - 13
91564-04012	2 - 94	E265-000140	1 - 102	G370-000500	5 - 3
91564-04016	4 - 35	E325-000040	1 - 43	G370-000520	5 - 17
91564-04016	5 - 19	E328-000110	1 - 82	G385-000040	4 - 6

Index					
Patrs Number	Key No.	Patrs Number	Key No.	Patrs Number	Key No.
I181900-1902	1 - 21	K401-000330	1 - 73	M470-000350	2 - 151
J141-000110	4 - 71	K401-000360	1 - 72	M470-001860	4 - 30
J211-000160	1 - 16	K401-000420	1 - 71	M608-000000	1 - 8
J221-000010	6 - 15	K401-000430	1 - 70	M609-000000	1 - 84
J405-001220	2 - 1	K401-000440	1 - 75	M613-000010	6 - 19
J410-000840	2 - 48	K401-000460	1 - 69	M703-000000	3 - 2
J410-003000	2 - 51	K404-000070	1 - 118	M703-000010	3 - 12
J415-000240	2 - 11	K405-000200	1 - 92	M704-000190	2 - 113
J415-000250	2 - 7	K596-000370	2 - 82	M704-000200	2 - 114
J425-000600	2 - 15	M102-000060	3 - 6	M704-000650	4 - 58
J425-000740	2 - 27	M106-000060	3 - 13	M704-000660	4 - 56
J430-000350	5 - 7	M106-000150	3 - 11	M704-000670	4 - 57
J430-000360	4 - 32	M108-000010	5 - 10	M704-000680	4 - 60
J430-000370	4 - 33	M109-000120	4 - 20	M704-000690	4 - 59
J430-000380	4 - 34	M109-000140	4 - 18	M704-000780	2 - 127
J465-000330	2 - 37	M109-000210	4 - 14	M704-000790	2 - 128
J470-002070	2 - 4	M109-000240	4 - 19	M704-000800	2 - 129
J470-002080	2 - 20	M111-000440	4 - 41	M704-000830	2 - 134
J470-002100	2 - 50	M111-000470	5 - 21	M704-000840	2 - 132
J470-002240	1 - 53	M111-001110	4 - 44	M704-001400	2 - 115
J470-002270	2 - 96	M126-000000	4 - 40	M705-000260	2 - 135
J470-004940	2 - 3	M126-000010	4 - 39	M707-000060	4 - 72
J470-004960	2 - 61	M126-000040	4 - 38	M707-000070	4 - 62
J470-004970	2 - 77	M305-000040	3 - 1	M707-000320	4 - 55
J470-004980	2 - 76	M306-000010	4 - 9	M707-000330	4 - 54
J470-004990	2 - 78	M308-000250	5 - 18	V104-001660	1 - 30
J470-005000	2 - 79	M308-000320	5 - 15	V139-000040	4 - 68
J470-005010	2 - 80	M308-000330	5 - 11	V139-000050	4 - 67
J470-006390	2 - 44	M383-000250	4 - 74	V144-000460	4 - 66
J470-006400	2 - 148	M383-000260	2 - 145	V144-000530	4 - 27
J470-006420	2 - 136	M383-000270	4 - 75	V145-000320	1 - 49
J480-000140	2 - 56	M402-000690	2 - 26	V145-000450	4 - 69
J480-000150	2 - 57	M404-000230	2 - 67	V162-000500	2 - 29
J480-000720	2 - 55	M404-000240	2 - 69	V162-000520	2 - 107
J485-000530	2 - 23	M406-000160	2 - 74	V162-000540	1 - 110
J485-000540	2 - 25	M406-001030	2 - 73	V186-000380	1 - 61
J491-000880	2 - 13	M413-000000	2 - 36	V186-000390	1 - 117
J491-000890	2 - 41	M415-000120	2 - 47	V187-000090	1 - 50
J491-000900	2 - 99	M415-000130	2 - 45	V187-000100	1 - 68
J491-001730	4 - 36	M416-000010	1 - 25	V187-000110	1 - 81
K221-000000	1 - 42	M416-000010	2 - 8	V187-000120	1 - 103
K313-000030	1 - 90	M416-000010	5 - 8	V187-000130	1 - 109
K329-000040	1 - 40	M416-000040	1 - 51	V204-000870	3 - 16
K400-001530	1 - 107	M416-000040	4 - 45	V204-001090	2 - 5
K400-001570	1 - 60	M416-000040	5 - 23	V204-001090	4 - 31
K400-001640	1 - 13	M417-000040	2 - 32	V205-000600	3 - 4
K400-001650	1 - 14	M417-000260	2 - 33	V205-000630	1 - 48
K400-001660	1 - 97	M417-000270	2 - 34	V205-000630	6 - 20
K400-001670	1 - 98	M418-000020	2 - 49	V205-000870	6 - 5

Index					
Patrs Number	Key No.	Patrs Number	Key No.	Patrs Number	Key No.
V205-001120	1 - 35	V495-001640	1 - 15		
V205-001120	2 - 16	V495-001650	1 - 37		
V205-001120	4 - 37	V495-001660	1 - 78		
V205-001170	1 - 10	V495-001670	1 - 79		
V205-001170	2 - 6	V495-001680	1 - 87		
V205-001170	6 - 24	V495-001690	1 - 88		
V206-000590	1 - 105	V495-001700	1 - 119		
V240-000140	2 - 87	V495-001710	1 - 93		
V242-000260	1 - 91	V495-001720	1 - 101		
V254-000110	1 - 22	V541-000350	2 - 106		
V261-000010	2 - 93	V581-000370	1 - 89		
V262-000190	2 - 95	V581-000380	1 - 96		
V262-000190	4 - 11	V583-000230	2 - 59		
V263-000330	2 - 28	V592-000140	3 - 7		
V264-000220	1 - 62	X504-006310	2 - 126		
V264-000220	2 - 18	X505-004630	2 - 118		
V265-000290	1 - 33	X505-004640	2 - 146		
V265-000290	2 - 71	X505-004650	2 - 149		
V265-000290	2 - 147	X505-004660	2 - 150		
V265-000310	2 - 84	X524-002850	4 - 64		
V299-000480	2 - 58				
V304-000350	3 - 17				
V324-000010	4 - 5				
V345-000030	2 - 140				
V345-000040	3 - 18				
V375-000380	2 - 24				
V375-000410	2 - 64				
V405-000000	2 - 2				
V420-003020	1 - 44				
V420-003030	1 - 45				
V420-003070	2 - 21				
V420-003080	2 - 63				
V420-003100	2 - 97				
V450-001260	6 - 10				
V450-001270	6 - 11				
V452-001050	6 - 8				
V471-002900	1 - 77				
V471-002910	1 - 100				
V475-005300	1 - 74				
V475-005320	1 - 76				
V475-005960	3 - 19				
V481-000150	2 - 83				
V486-000240	2 - 85				
V490-000790	1 - 20				
V490-000810	1 - 9				
V490-000810	2 - 81				
V494-000350	3 - 3				
V495-001620	1 - 5				
V495-001630	1 - 6				



# **YAMABIKO CORPORATION**

7-2 SUEHIROCHO 1-CHOME, OHME, TOKYO 198-8760, JAPAN  
PHONE: 81-428-32-6118. FAX: 81-428-32-6145.

**shindaiwa<sup>®</sup>**

14Fb  
No.DDA-A46-186