



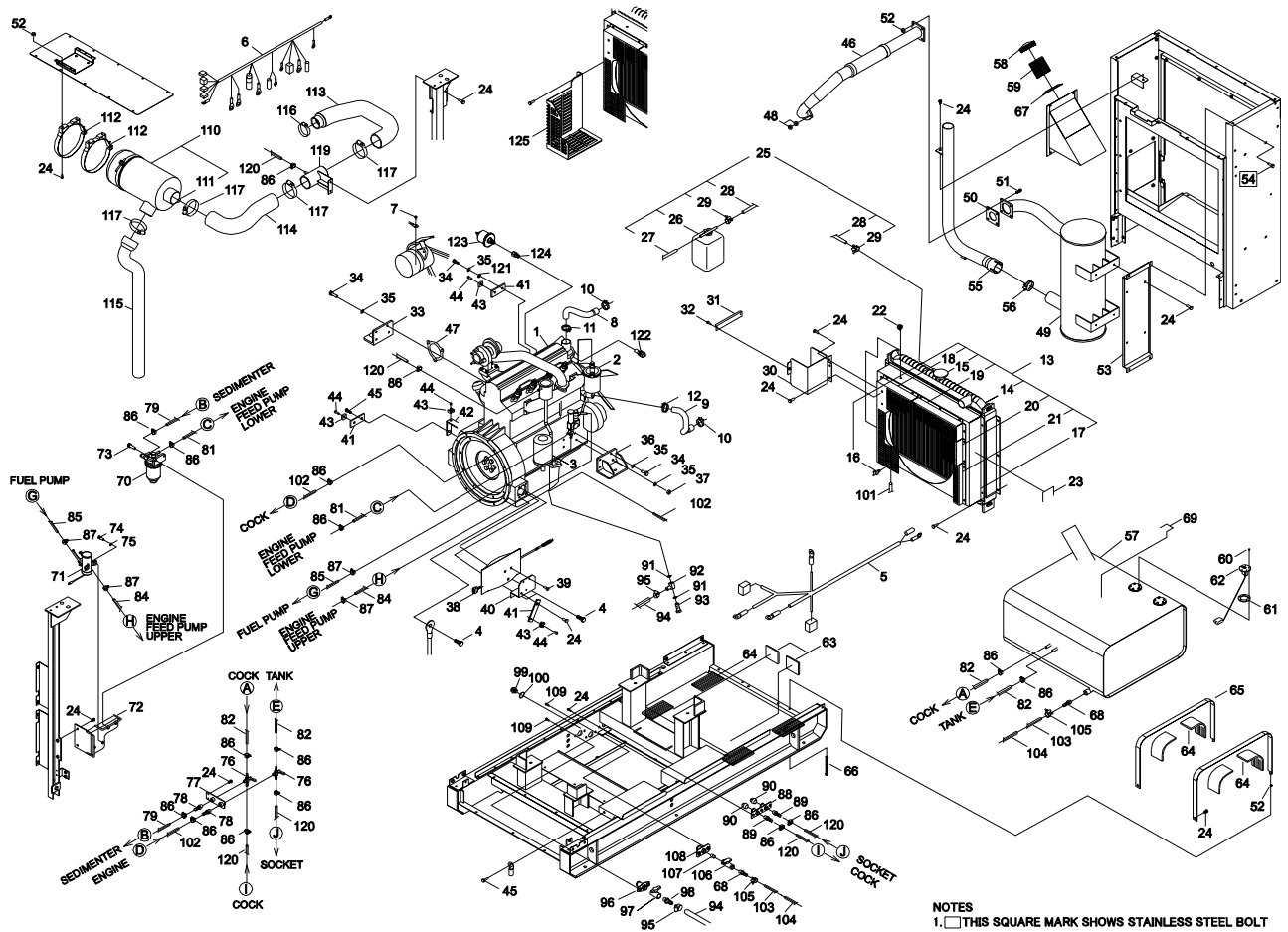
PARTS CATALOGUE

DGA50C

1000001 - 1000118

1. ENGINE, RADIATOR

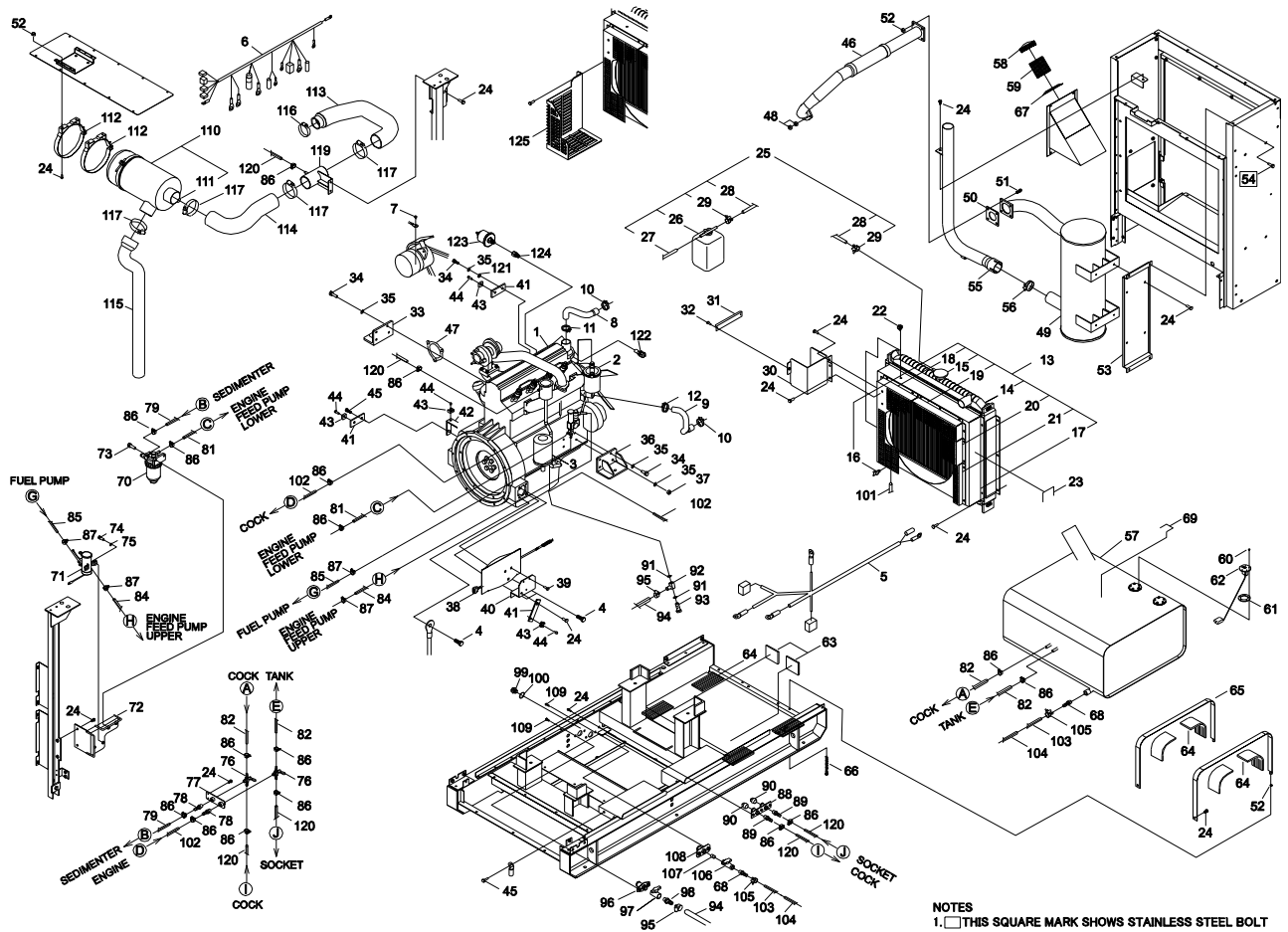
DGA50C



KEY	LV	PART NUMBER	Q'TY	DESCRIPTION	REMARKS	NOTE1	NOTE2
4		91024-12030	3	BOLT	BM-12*30/W,SW		
5		G031-001980	1	WIRING HARNESS			
6		G031-004360	1	HARNESS WIRE			
7		91036-05012	1	BOLT SW			
10		V495-001620	2	HOSE CLAMP			
11		V495-001730	1	HOSE CLAMP			
12		V495-001740	1	HOSE CLAMP			
15		M608-000000	1	RADIATOR CAP			
22		V490-000790	2	CLAMP			
24		900147-08020	31	BOLT 8*20	8*20		
25		G125-000110	1	SUBTANK ASSY			
26	+	G125-000130	1	SUB TANK			
27	+	K400-001610	1	HOSE			
28	+	K400-001620	1	HOSE			
29	+	V495-001750	2	HOSE CLAMP			
30		G126-000080	1	TANK STAY			
31		C519-004560	1	STAY			
32		V204-001090	3	BOLT FT SW			
33		G121-000380	1	STAY,ENGINE			
34		91014-10022	8	BOLT			
35		900605-00010	9	WASHER, SPRING 10	10		
36		G121-000390	1	STAY,ENGINE			
37		900501-00010	1	NUT 10*1.25	10*P1.25		
39		V254-000110	3	SCREW			
40		C519-004570	1	STAY			
41		C519-002460	3	STAY			
42		C519-002550	1	SUPPORT			
43		M416-000010	6	TIE MOUNT			
44		91343-05012	6	SCREW			
45		900147-10020	3	BOLT	10*20 SW,W		
46		G231-000240	1	FLEXIBLE TUBE			
47		V104-001670	1	GASKET			
48		900504-00008	6	NUT 8B	8B		
49		A300-001410	1	MUFFLER			
50		V104-001660	1	GASKET			
51		91024-08040	4	BOLT SW			
52		V265-000290	10	FLANGE NUT			
53		A319-000450	1	STAY,MUFFLER			
54		V205-000640	4	BOLT TAPPING			
55		G231-000310	1	TAIL PIPE			
56		V495-001650	1	HOSE CLAMP			
57		A350-001601	1	FUEL TANK			
58		E111-000110	1	TANK CAP			
59		K329-000040	1	STRAINER			
60		91564-05010	10	SCREW SPW			
61		K221-000000	2	PACKING			
62		E325-000050	1	FUEL GAUGE			
63		V420-003020	2	PAD			
64		V420-003030	8	PAD			
65		A392-000170	2	BAND,FUEL TANK			
66		V205-000630	2	BOLT			
67		V145-000320	1	TANK BUSH			
68		V187-000090	2	NIPPLE			
69		M416-000040	1	TIE MOUNT			
70		G260-000050	1	WATER SEDIMENTER			
72		A376-000310	1	BRACKET,PUMP			
73		91024-10030	2	BOLT	BM-10*30/W,SW		

1. ENGINE, RADIATOR

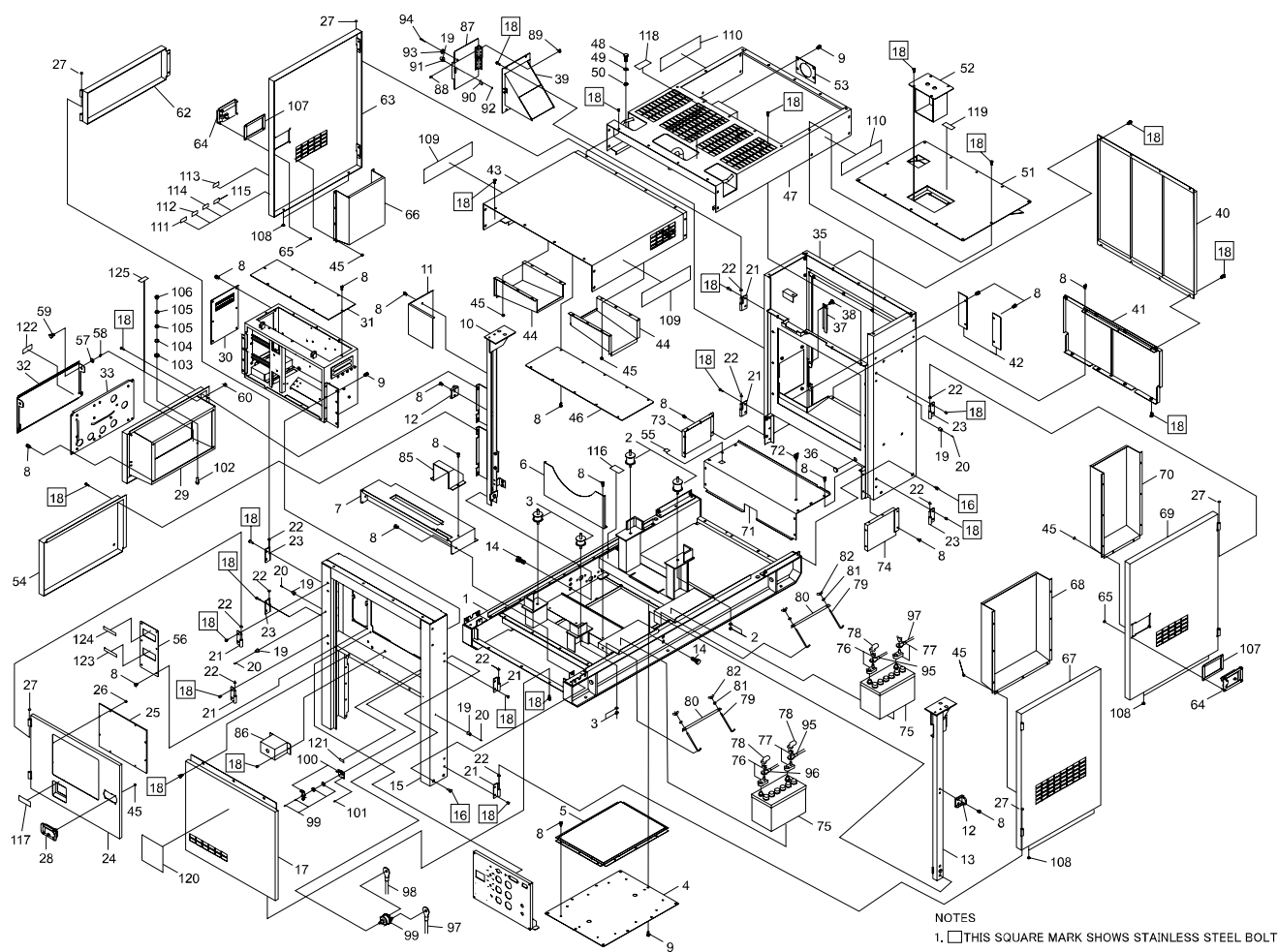
DGA50C



KEY	LV	PART NUMBER	Q'TY	DESCRIPTION	REMARKS	NOTE1	NOTE2
74		91022-06025	2	BOLT SW			
75		V345-000050	2	WASHER			
76		E265-000110	2	COCK			
77		E258-000120	1	BRACKET,COCK			
78		V187-000100	2	NIPPLE			
79		K401-000360	1	HOSE			
81		K401-000310	1	HOSE			
82		V471-002920	2	HOSE			
84		V471-002930	1	HOSE			
85		K400-001680	1	HOSE			
86		V495-001660	17	HOSE CLAMP			
87		V495-001670	4	HOSE CLAMP			
88		C153-000050	1	SOCKET			
89		V187-000110	2	NIPPLE			
90		E328-000110	2	DRAIN PLUG			
91		V581-000370	2	O RING			
92		K313-000030	1	SOCKET			
93		V242-000260	1	NIPPLE			
94		K405-000190	1	HOSE			
95		V495-001710	2	HOSE CLAMP			
96		C153-000090	1	SOCKET			
97		E265-000130	1	COCK			
98		V187-000130	1	NIPPLE			
100		V581-000380	1	O RING			
101		K400-001660	1	HOSE			
102		K401-000390	2	HOSE			
103		V471-002910	1	HOSE			
104		V475-005320	2	TUBE			
105		V495-001720	2	HOSE CLAMP			
106		E265-000140	1	DRAIN COCK			
107		V187-000120	1	NIPPLE			
108		C153-000080	1	SOCKET			
109		900147-10025	4	BOLT	10*25SW,W		
111		M609-000000	1	INDICATOR			
113		G213-000150	1	AIR HOSE			
114		G213-000160	1	AIR HOSE			
115		G213-000170	1	AIR HOSE			
116		V495-001760	1	HOSE CLAMP			
117		V495-001770	4	HOSE CLAMP			
119		V186-000480	1	JOINT,PIPE			
120		K401-000440	3	HOSE			
121		900602-00010	1	WASHER 10(10.5*21*2)	10.5*21*2		
125		A172-002490	1	COVER,FAN			

2. FRAME, COVER

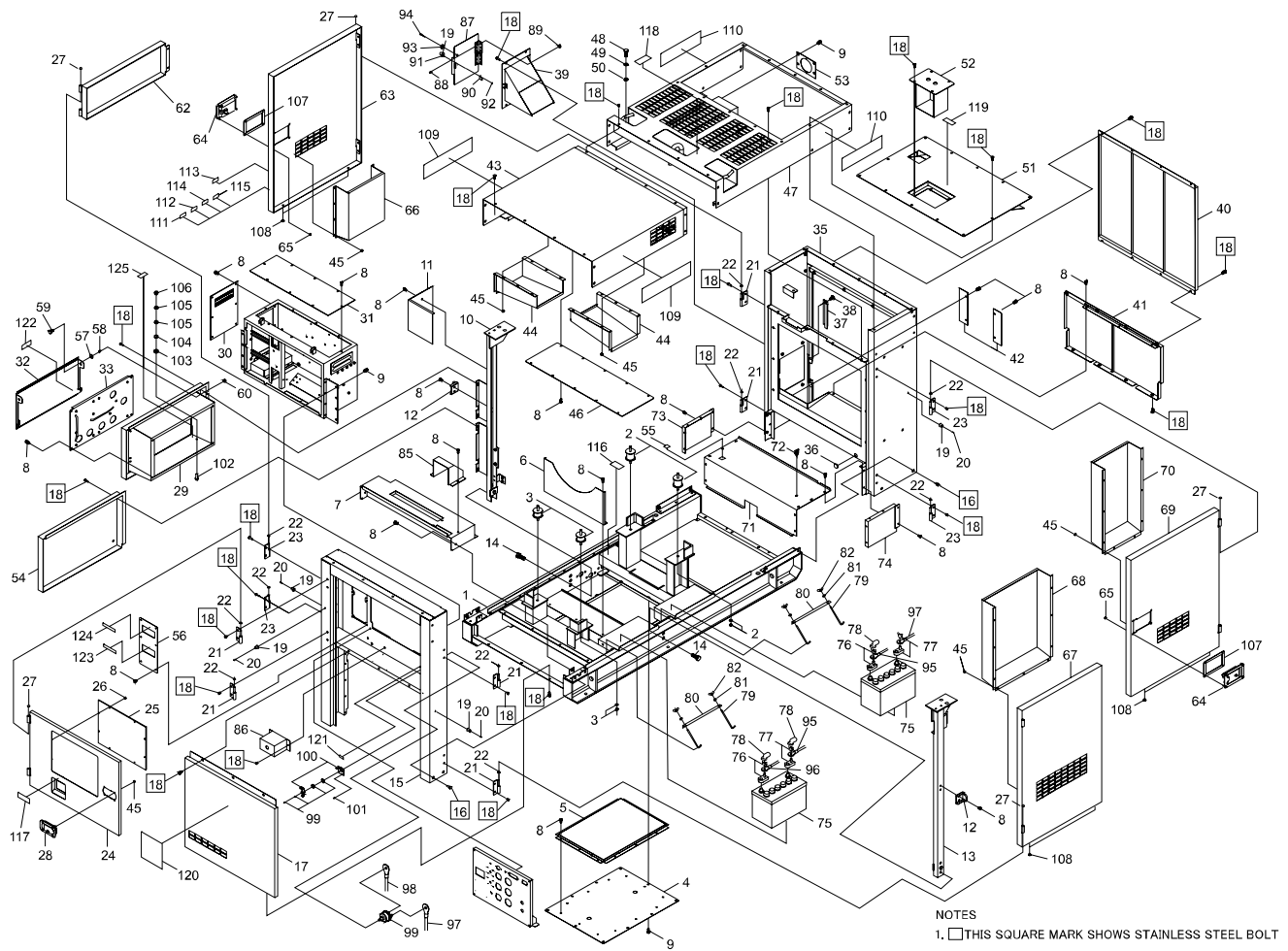
DGA50C



KEY	LV	PART NUMBER	Q'TY	DESCRIPTION	REMARKS	NOTE1	NOTE2
1		J405-000910	1	BED			
2		V405-000000	2	AV RUBBER			
3		V420-003040	2	AV RUBBER			
4		J470-004940	1	COVER			
5		J470-002070	1	PLATE COVER			
6		C557-000340	1	PLATE,PROTECTION			
7		G122-001780	1	DUCT,AIR			
8		V204-001090	87	BOLT FT SW			
9		900147-08020	22	BOLT 8*20	8*20		
10		J415-000880	1	STAY,BONNET			
11		A209-000690	1	PLATE,INSULATOR			
12		G257-000620	2	STOPPER			
13		J415-000460	1	STAY,BONNET			
14		91024-12040	4	BOLT SW			
15		J491-001810	1	BONNET			
16		91034-10020	8	BOLT SPW			
17		J425-000610	1	FRONT PLATE			
18		V205-000640	94	BOLT TAPPING			
19		V420-003070	5	STAND RUBBER			
20		91381-04020	4	SCREW TAPPING			
21		J485-000530	6	HINGE			
22		V375-000380	10	COLLAR			
23		J485-000540	4	HINGE			
24		M402-000660	1	DOOR,FRONT			
25		J425-000740	1	PANEL			
26		V263-000330	12	FLANGE NUT			
27		V162-000500	10	PLAG			
28		C701-000420	1	LOCK COVER			
29		J491-001830	1	BONNET			
30		M417-000290	1	COVER,BOX			
31		M417-000280	1	COVER,BOX			
32		M470-001870	1	COVER			
33		J491-001740	1	BONNET			
35		J491-001770	1	BONNET			
36		V144-000360	1	GROMMET			
37		C618-000200	1	COVER STAY			
38		91318-08020	2	SCREW TRUSS			
39		M470-002640	1	COVER			
40		M415-000100	1	REAR PLATE			
41		M415-000110	1	REAR PLATE			
42		C618-000350	2	STAY,COVER			
43		J491-001840	1	BONNET			
44		G122-001790	1	DUCT,AIR			
45		V264-000220	44	FLANGE NUT			
46		J470-002110	1	DUCT PLATE			
47		J491-001690	1	BONNET			
48		91000-16040	4	BOLT	B-16*40		
49		900605-00016	4	WASHER, SPRING 16	16		
50		92203-16000	4	WASHER			
51		J480-001310	1	LID,COVER			
52		J480-001440	1	LID,COVER			
53		C618-000360	2	STAY,COVER			
54		J491-001820	1	BONNET			
55		M416-000040	1	TIE MOUNT			
56		C160-001221	1	PANEL,OPERATION			
57		V420-003080	2	BUSH RUBBER			
58		V375-000410	2	COLLAR			
59		91024-10030	2	BOLT	BM-10*30/W,SW		

2. FRAME, COVER

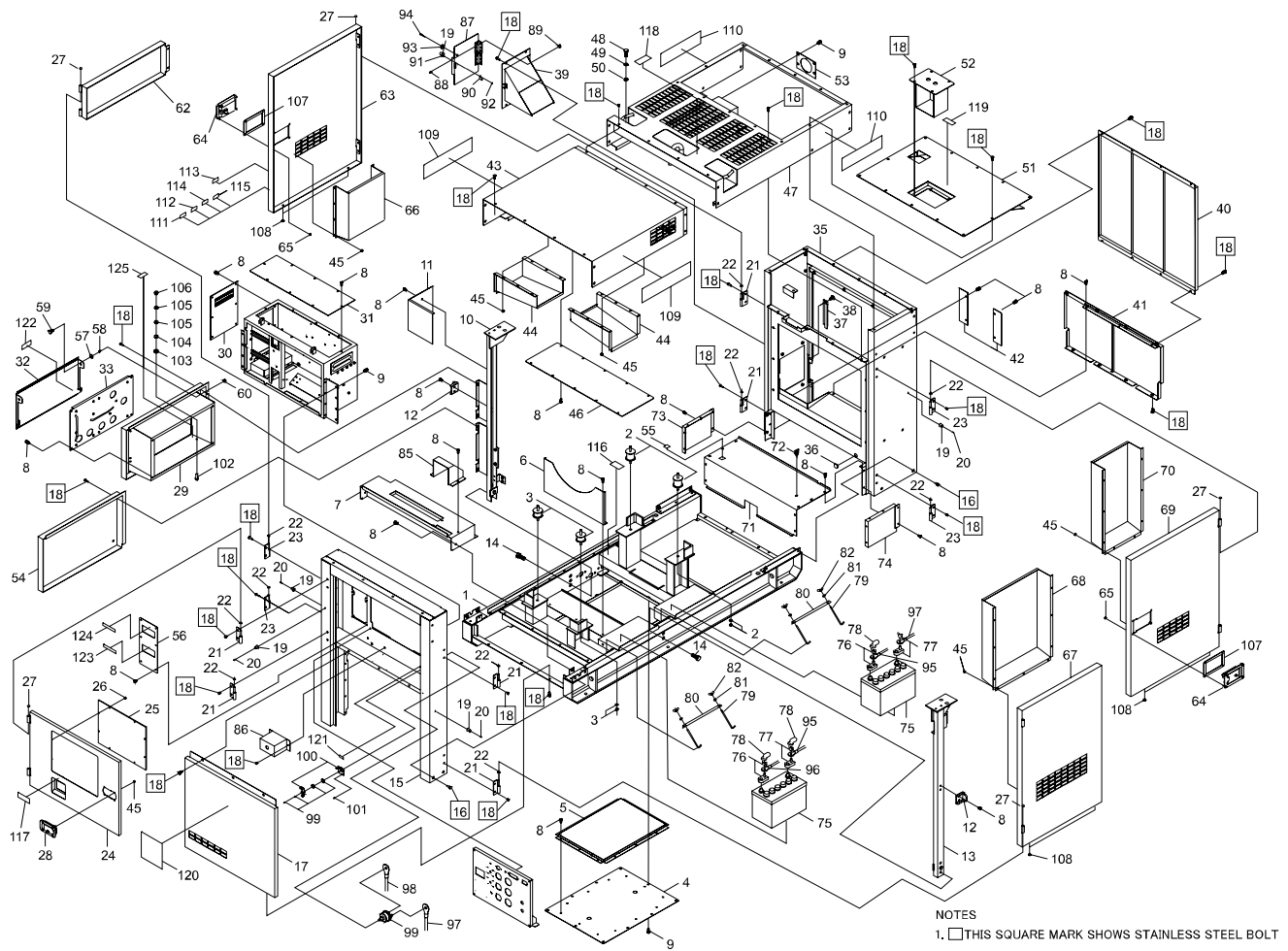
DGA50C



KEY	LV	PART NUMBER	Q'TY	DESCRIPTION	REMARKS	NOTE1	NOTE2
60		900500-00010	2	NUT 10	10*P1.5		
62		M404-001190	1	DOOR,LEFT			
63		M404-001200	1	DOOR,LEFT			
64		C701-000440	2	LOCK COVER			
65		V265-000290	16	FLANGE NUT			
66		G122-000370	1	DUCT			
67		M406-000170	1	RIGHT DOOR FRONT			
68		G122-000390	1	DUCT			
69		M406-001670	1	DOOR,RIGHT			
70		G122-000400	1	DUCT			
71		J470-002120	1	TANK COVER FRONT			
72		M416-000000	1	BAND STOPPER			
73		J470-005340	1	COVER			
74		J470-005350	1	COVER			
75		V481-000150	2	BATTERY 95D31R			
76		V486-000200	2	TERMINAL			
77		V486-000210	2	TERMINAL			
78		G305-000040	3	TERMINAL CAP			
79		V240-000140	4	BOLT BATTERY			
80		G303-000310	2	HOLDER,BATTERY			
81		900602-00008	4	WASHER 8	8,4*17*1.6		
82		92190-08000	4	WING NUT			
85		G122-001800	1	DUCT,AIR			
86		A472-000590	1	CASE,SWITCH			
87		M470-002650	1	COVER			
88		91564-04012	6	SCREW SW			
89		V262-000190	6	FLANGE NUT			
90		C390-000010	1	TONGUE			
91		91341-03010	2	SCREW-SW	M3*10		
92		V261-000010	2	FLANGE NUT			
93		V420-003100	1	STAND RUBBER			
94		91341-04025	1	SCREW SW			
95		M380-000930	1	LEAD	60MM2 L480		
96		M380-000940	1	LEAD	60MM2 L1150		
97		M384-000620	1	LEAD	60MM2L2000		
98		M384-000630	1	LEAD	60MM2 L1550		
99		G334-000860	1	BATTERY SWITCH			
100		J141-000110	1	SWITCH LEVER SET			
101		91568-05012	2	SCREW SLPW			
102		91034-08040	1	BOLT SW			
103		V265-000300	1	FLANGE NUT			
104		900609-00008	1	WASHER, SPRING 8 SUS	8 SUS		
105		92225-08000	2	WASHER			
106		900509-00008	1	NUT 8 SUS	8 SUS		
107		V541-000350	2	SHEET			
108		V162-000520	6	PLUG			
109		X504-006310	2	LABEL TRADE			
110		M705-000910	2	LABEL FEATURE	50KVA		
111		M704-000190	1	LABEL INST			
112		M704-000200	1	LABEL INST			
113		M704-000780	1	LABEL INST			
114		M704-000790	1	LABEL INST			
115		M704-000800	1	LABEL INST			
116		M704-000830	1	LABEL INST			
117		M707-000070	1	LABEL INST			
118		X505-004630	1	LABEL CAUTION			
119		X505-004650	1	LABEL CAUTION			
120		X505-004660	1	LABEL CAUTION			
121		M707-000060	1	LABEL INST			

2. FRAME, COVER

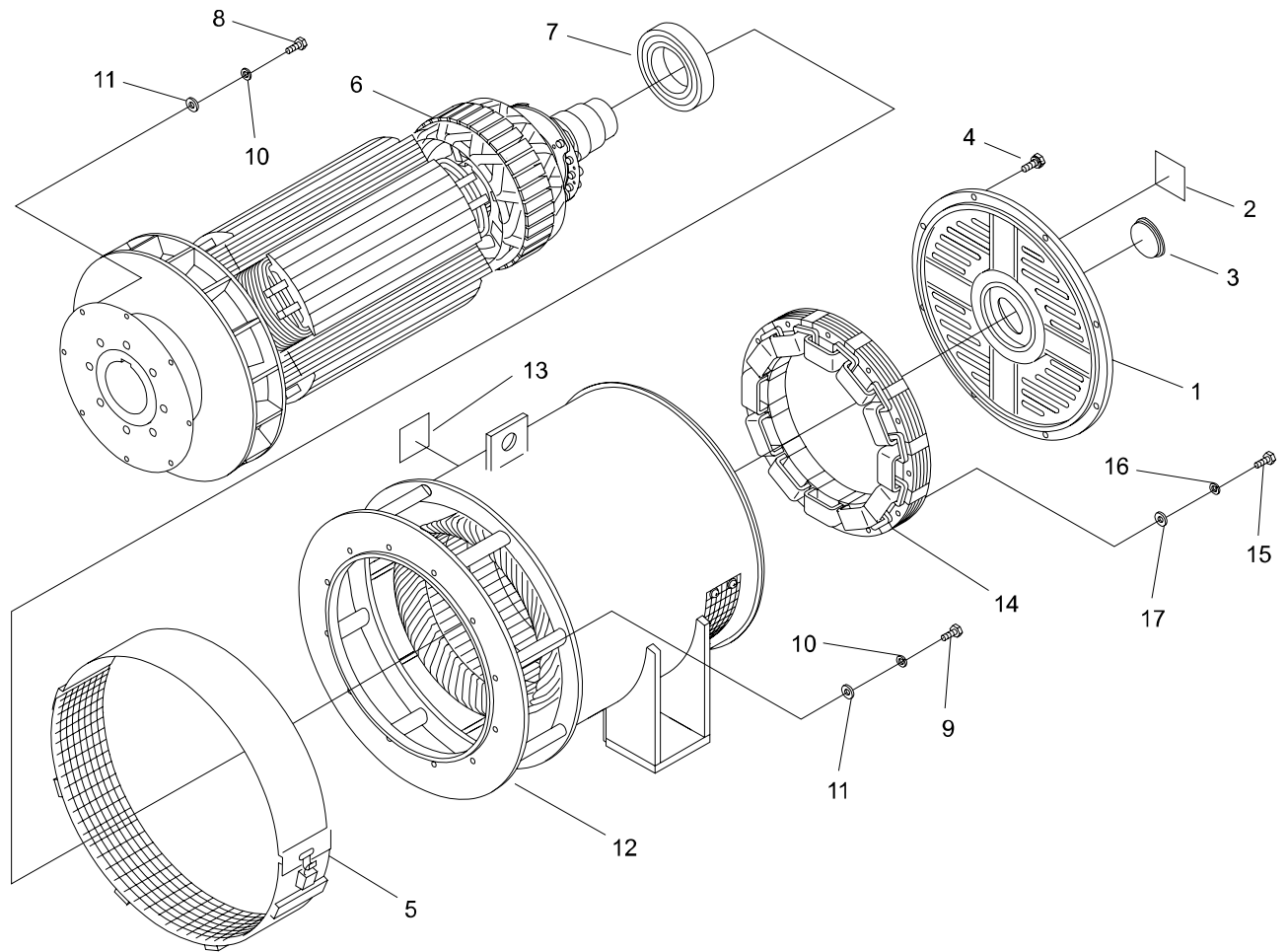
DGA50C



KEY	LV	PART NUMBER	Q'TY	DESCRIPTION	REMARKS	NOTE1	NOTE2
122		X505-004640	1	LABEL CAUTION			
123		M707-000080	1	LABEL INST			
124		M707-000140	1	LABEL INST			
125		M704-001400	1	LABEL INST			

3. GENERATOR

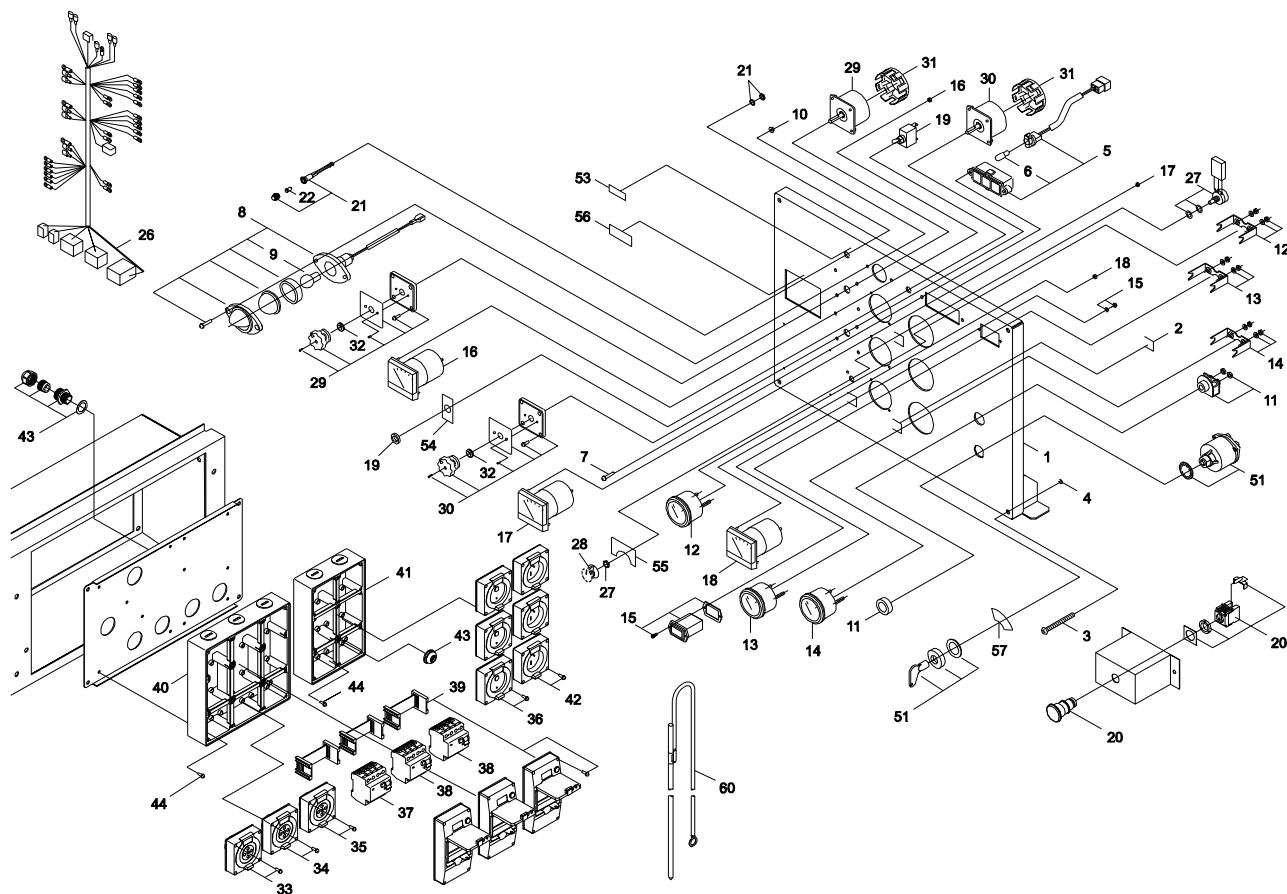
DGA50C



KEY	LV	PART NUMBER	Q'TY	DESCRIPTION	REMARKS	NOTE1	NOTE2
1		M305-000020	1	REAR BRACKET			
2		M703-000000	1	LABEL THERMOMETER			
3		V494-000350	1	CAP			
4		V205-000600	6	BOLT SW			
5		A172-001570	1	FAN COVER			
6		M102-000070	1	ROTOR			
7		V592-000150	1	BALL BEARING			
8		91026-10045	9	BOLT			
9		91026-10030	12	BOLT			
10		900605-00010	21	WASHER, SPRING 10	10		
11		900602-00010	21	WASHER 10(10.5*21*2)	10.5*21*2		
12		A041-000470	1	STATOR,ASM			
13		M703-000010	1	LABEL THERMOMETER			
14		M106-000070	1	STATOR			
15		V204-000850	3	BOLT			
16		V304-000350	3	SPRING WASHER			
17		V345-000040	3	WASHER			

4. CONTROL PANEL

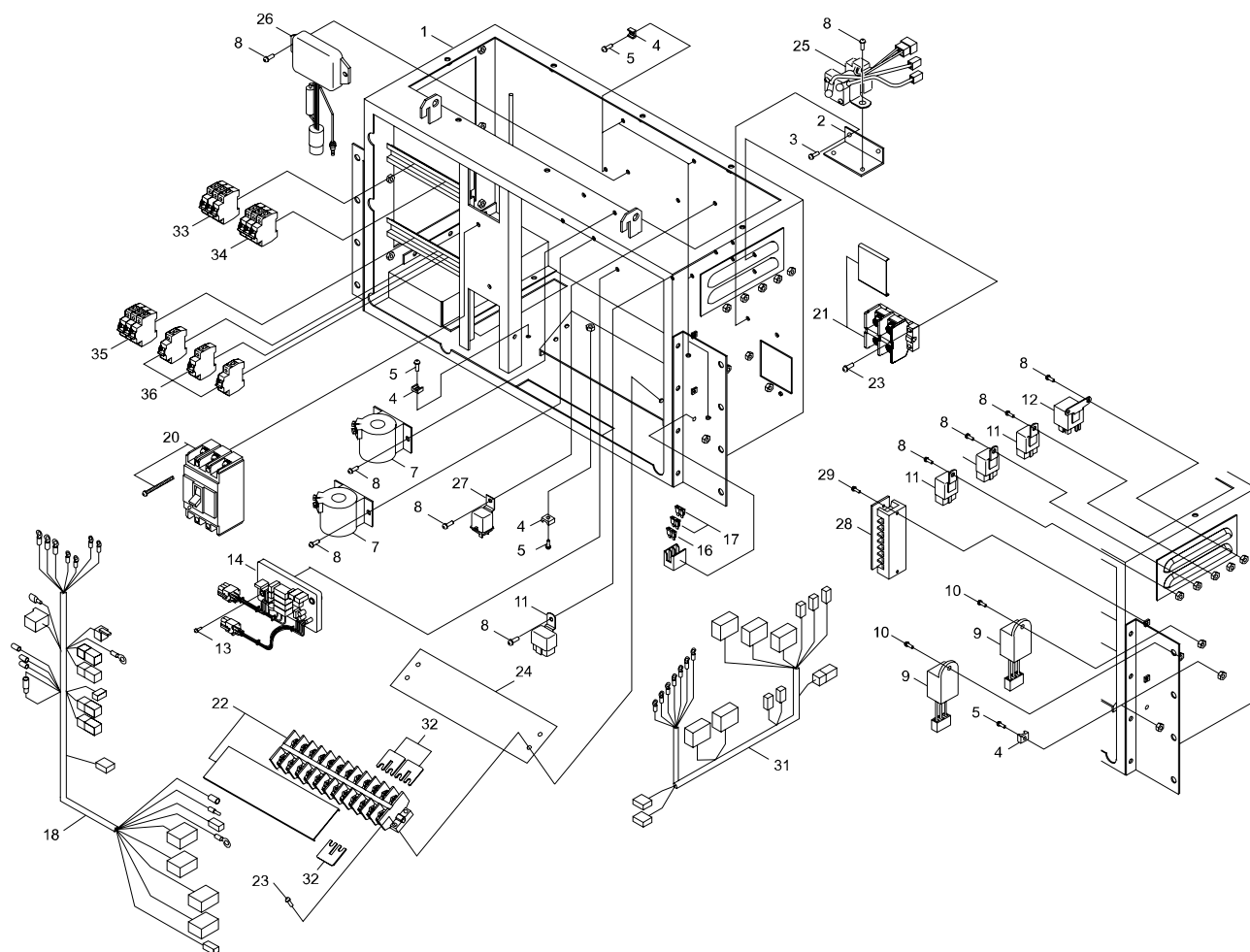
DGA50C



KEY	LV	PART NUMBER	Q'TY	DESCRIPTION	REMARKS	NOTE1	NOTE2
1		C160-001550	1	PANEL OPERATION			
2		M416-000040	6	TIE MOUNT			
3		91318-06030	4	SCREW TRUSS			
4		V324-000010	4	WASHER			
5		G385-000010	1	MONITOR ASSY			
6	+	G328-000000	3	LAMP			
7		91374-04016	2	SCREW TAPPING			
8		M306-000000	1	LAMP BRACKET -SA			
9	+	G328-000190	1	BULB			
10		V262-000190	2	FLANGE NUT			
12		M109-000190	1	METER			
13		M109-000200	1	METER			
14		G318-000020	1	FUEL METER			
15		G319-000060	1	HOUR METER			
16		M109-000140	1	METER (V)			
17		M109-000110	1	METER			
18		M109-000120	1	METER			
19		A045-000510	1	TOGGLE SWITCH			
20		G334-000770	1	BUTTON SWITCH			
21		G327-000280	1	LAMP BRACKET ASSY			
22	+	G328-000060	1	LAMP			
26		G031-002350	1	WIRE HARNESS-A			
27		G314-000140	1	VARIABLE RESSISTOR			
28		E145-000060	1	DIAL			
29		G334-000720	1	SWITCH			
30		G334-000650	1	SWITCH			
31		J470-002170	2	SWITCH COVER			
32		V144-000350	2	GROMMET			
33		C154-000230	1	PLUG SOCKET			
34		C154-000210	1	SOCKET			
35		C154-000190	1	SOCKET			
36		C154-000200	3	SOCKET			
37		M111-000600	1	BREAKER			
38		M111-001110	2	BREAKER			
39		A405-000000	3	BREAKER COVER			
40		J430-000390	1	CONTROL BOX			
41		J430-000380	1	CONTROL BOX			
42		M111-000440	3	SOCKET			
43		V139-000040	6	CLAMP			
44		91564-04016	12	SCREW SPW			
53		M704-000650	1	LABEL INST			
54		M704-000660	1	LABEL INST			
55		M704-000670	1	LABEL INST			
56		M704-000680	1	LABEL INST			
57		M704-000770	1	LABEL INST			
60		M310-000000	1	EARTH ROD SUBASSY			

5. CONTROL BOX

DGA50C



KEY	LV	PART NUMBER	Q'TY	DESCRIPTION	REMARKS	NOTE1	NOTE2
1		J430-001250	1	BOX,CONTROL			
2		C519-004580	1	STAY			
3		91564-05012	2	SCREW SW			
4		M416-000010	10	TIE MOUNT			
5		91343-05012	10	SCREW			
7		M108-000020	2	CT			
8		91568-05012	15	SCREW SLPW			
9		G370-000480	2	PRINTED CIRCUIT			
10		91564-05014	2	SCREW SW			
11		G343-000130	4	RELAY			
12		G343-000250	1	RELAY			
13		91564-04020	2	SCREW SPW			
14		G370-000400	1	PRINT CIRCUIT			
16		G350-000190	1	FUSE			
17		G350-000230	2	FUSE	10A		
18		G031-004350	1	HARNESS,WIRE			
20		M111-000510	1	BREAKER			
21		M308-000490	1	BLOCK,TERMINAL			
22		M308-000340	1	TERMINAL BLOCK			
23		91564-05025	8	SCREW SPW			
24		M702-000090	1	PAPER,INS	T0.25X70X254		
28		M308-000250	1	TERMINAL BLOCK			
29		91564-04012	2	SCREW SW			
31		G031-002360	1	WIRE HARNESS-A			
32		C230-000040	3	BUS BAR			
33		M111-000530	1	BREAKER			
34		M111-000480	1	BREAKER			
35		M111-000410	1	BREAKER			
36		M111-000420	3	BREAKER			

Index					
Patrs Number	Key No.	Patrs Number	Key No.	Patrs Number	Key No.
900147-08020	1 - 24	A041-000470	3 - 12	G122-000370	2 - 66
900147-08020	2 - 9	A045-000510	4 - 19	G122-000390	2 - 68
900147-10020	1 - 45	A172-001570	3 - 5	G122-000400	2 - 70
900147-10025	1 - 109	A172-002490	1 - 125	G122-001780	2 - 7
900500-00010	2 - 60	A209-000690	2 - 11	G122-001790	2 - 44
900501-00010	1 - 37	A300-001410	1 - 49	G122-001800	2 - 85
900504-00008	1 - 48	A319-000450	1 - 53	G125-000110	1 - 25
900509-00008	2 - 106	A350-001601	1 - 57	G125-000130	1 - 26
900602-00008	2 - 81	A376-000310	1 - 72	G126-000080	1 - 30
900602-00010	1 - 121	A392-000170	1 - 65	G213-000150	1 - 113
900602-00010	3 - 11	A405-000000	4 - 39	G213-000160	1 - 114
900605-00010	1 - 35	A472-000590	2 - 86	G213-000170	1 - 115
900605-00010	3 - 10	C153-000050	1 - 88	G231-000240	1 - 46
900605-00016	2 - 49	C153-000080	1 - 108	G231-000310	1 - 55
900609-00008	2 - 104	C153-000090	1 - 96	G257-000620	2 - 12
91000-16040	2 - 48	C154-000190	4 - 35	G260-000050	1 - 70
91014-10022	1 - 34	C154-000200	4 - 36	G303-000310	2 - 80
91022-06025	1 - 74	C154-000210	4 - 34	G305-000040	2 - 78
91024-08040	1 - 51	C154-000230	4 - 33	G314-000140	4 - 27
91024-10030	1 - 73	C160-001221	2 - 56	G318-000020	4 - 14
91024-10030	2 - 59	C160-001550	4 - 1	G319-000060	4 - 15
91024-12030	1 - 4	C230-000040	5 - 32	G327-000280	4 - 21
91024-12040	2 - 14	C390-000010	2 - 90	G328-000000	4 - 6
91026-10030	3 - 9	C519-002460	1 - 41	G328-000060	4 - 22
91026-10045	3 - 8	C519-002550	1 - 42	G328-000190	4 - 9
91034-08040	2 - 102	C519-004560	1 - 31	G334-000650	4 - 30
91034-10020	2 - 16	C519-004570	1 - 40	G334-000720	4 - 29
91036-05012	1 - 7	C519-004580	5 - 2	G334-000770	4 - 20
91318-06030	4 - 3	C557-000340	2 - 6	G334-000860	2 - 99
91318-08020	2 - 38	C618-000200	2 - 37	G343-000130	5 - 11
91341-03010	2 - 91	C618-000350	2 - 42	G343-000250	5 - 12
91341-04025	2 - 94	C618-000360	2 - 53	G350-000190	5 - 16
91343-05012	1 - 44	C701-000420	2 - 28	G350-000230	5 - 17
91343-05012	5 - 5	C701-000440	2 - 64	G370-000400	5 - 14
91374-04016	4 - 7	E111-000110	1 - 58	G370-000480	5 - 9
91381-04020	2 - 20	E145-000060	4 - 28	G385-000010	4 - 5
91564-04012	2 - 88	E258-000120	1 - 77	J141-000110	2 - 100
91564-04012	5 - 29	E265-000110	1 - 76	J405-000910	2 - 1
91564-04016	4 - 44	E265-000130	1 - 97	J415-000460	2 - 13
91564-04020	5 - 13	E265-000140	1 - 106	J415-000880	2 - 10
91564-05010	1 - 60	E325-000050	1 - 62	J425-000610	2 - 17
91564-05012	5 - 3	E328-000110	1 - 90	J425-000740	2 - 25
91564-05014	5 - 10	G031-001980	1 - 5	J430-000380	4 - 41
91564-05025	5 - 23	G031-002350	4 - 26	J430-000390	4 - 40
91568-05012	2 - 101	G031-002360	5 - 31	J430-001250	5 - 1
91568-05012	5 - 8	G031-004350	5 - 18	J470-002070	2 - 5
92190-08000	2 - 82	G031-004360	1 - 6	J470-002110	2 - 46
92203-16000	2 - 50	G121-000380	1 - 33	J470-002120	2 - 71
92225-08000	2 - 105	G121-000390	1 - 36	J470-002170	4 - 31

Index					
Patrs Number	Key No.	Patrs Number	Key No.	Patrs Number	Key No.
J470-004940	2 - 4	M380-000940	2 - 96	V162-000500	2 - 27
J470-005340	2 - 73	M384-000620	2 - 97	V162-000520	2 - 108
J470-005350	2 - 74	M384-000630	2 - 98	V186-000480	1 - 119
J480-001310	2 - 51	M402-000660	2 - 24	V187-000090	1 - 68
J480-001440	2 - 52	M404-001190	2 - 62	V187-000100	1 - 78
J485-000530	2 - 21	M404-001200	2 - 63	V187-000110	1 - 89
J485-000540	2 - 23	M406-000170	2 - 67	V187-000120	1 - 107
J491-001690	2 - 47	M406-001670	2 - 69	V187-000130	1 - 98
J491-001740	2 - 33	M415-000100	2 - 40	V204-000850	3 - 15
J491-001770	2 - 35	M415-000110	2 - 41	V204-001090	1 - 32
J491-001810	2 - 15	M416-000000	2 - 72	V204-001090	2 - 8
J491-001820	2 - 54	M416-000010	1 - 43	V205-000600	3 - 4
J491-001830	2 - 29	M416-000010	5 - 4	V205-000630	1 - 66
J491-001840	2 - 43	M416-000040	1 - 69	V205-000640	1 - 54
K221-000000	1 - 61	M416-000040	2 - 55	V205-000640	2 - 18
K313-000030	1 - 92	M416-000040	4 - 2	V240-000140	2 - 79
K329-000040	1 - 59	M417-000280	2 - 31	V242-000260	1 - 93
K400-001610	1 - 27	M417-000290	2 - 30	V254-000110	1 - 39
K400-001620	1 - 28	M470-001870	2 - 32	V261-000010	2 - 92
K400-001660	1 - 101	M470-002640	2 - 39	V262-000190	2 - 89
K400-001680	1 - 85	M470-002650	2 - 87	V262-000190	4 - 10
K401-000310	1 - 81	M608-000000	1 - 15	V263-000330	2 - 26
K401-000360	1 - 79	M609-000000	1 - 111	V264-000220	2 - 45
K401-000390	1 - 102	M702-000090	5 - 24	V265-000290	1 - 52
K401-000440	1 - 120	M703-000000	3 - 2	V265-000290	2 - 65
K405-000190	1 - 94	M703-000010	3 - 13	V265-000300	2 - 103
M102-000070	3 - 6	M704-000190	2 - 111	V304-000350	3 - 16
M106-000070	3 - 14	M704-000200	2 - 112	V324-000010	4 - 4
M108-000020	5 - 7	M704-000650	4 - 53	V345-000040	3 - 17
M109-000110	4 - 17	M704-000660	4 - 54	V345-000050	1 - 75
M109-000120	4 - 18	M704-000670	4 - 55	V375-000380	2 - 22
M109-000140	4 - 16	M704-000680	4 - 56	V375-000410	2 - 58
M109-000190	4 - 12	M704-000770	4 - 57	V405-000000	2 - 2
M109-000200	4 - 13	M704-000780	2 - 113	V420-003020	1 - 63
M111-000410	5 - 35	M704-000790	2 - 114	V420-003030	1 - 64
M111-000420	5 - 36	M704-000800	2 - 115	V420-003040	2 - 3
M111-000440	4 - 42	M704-000830	2 - 116	V420-003070	2 - 19
M111-000480	5 - 34	M704-001400	2 - 125	V420-003080	2 - 57
M111-000510	5 - 20	M705-000910	2 - 110	V420-003100	2 - 93
M111-000530	5 - 33	M707-000060	2 - 121	V471-002910	1 - 103
M111-000600	4 - 37	M707-000070	2 - 117	V471-002920	1 - 82
M111-001110	4 - 38	M707-000080	2 - 123	V471-002930	1 - 84
M305-000020	3 - 1	M707-000140	2 - 124	V475-005320	1 - 104
M306-000000	4 - 8	V104-001660	1 - 50	V481-000150	2 - 75
M308-000250	5 - 28	V104-001670	1 - 47	V486-000200	2 - 76
M308-000340	5 - 22	V139-000040	4 - 43	V486-000210	2 - 77
M308-000490	5 - 21	V144-000350	4 - 32	V490-000790	1 - 22
M310-000000	4 - 60	V144-000360	2 - 36	V494-000350	3 - 3
M380-000930	2 - 95	V145-000320	1 - 67	V495-001620	1 - 10

Index					
Patrs Number	Key No.	Patrs Number	Key No.	Patrs Number	Key No.
V495-001650	1 - 56				
V495-001660	1 - 86				
V495-001670	1 - 87				
V495-001710	1 - 95				
V495-001720	1 - 105				
V495-001730	1 - 11				
V495-001740	1 - 12				
V495-001750	1 - 29				
V495-001760	1 - 116				
V495-001770	1 - 117				
V541-000350	2 - 107				
V581-000370	1 - 91				
V581-000380	1 - 100				
V592-000150	3 - 7				
X504-006310	2 - 109				
X505-004630	2 - 118				
X505-004640	2 - 122				
X505-004650	2 - 119				
X505-004660	2 - 120				

YAMABIKO CORPORATION

7-2 SUEHIROCHO 1-CHOME, OHME, TOKYO 198-8760, JAPAN
PHONE: 81-428-32-6118. FAX: 81-428-32-6145.

shindaiwa[®]

14Cb
No.DDA-A47-207