

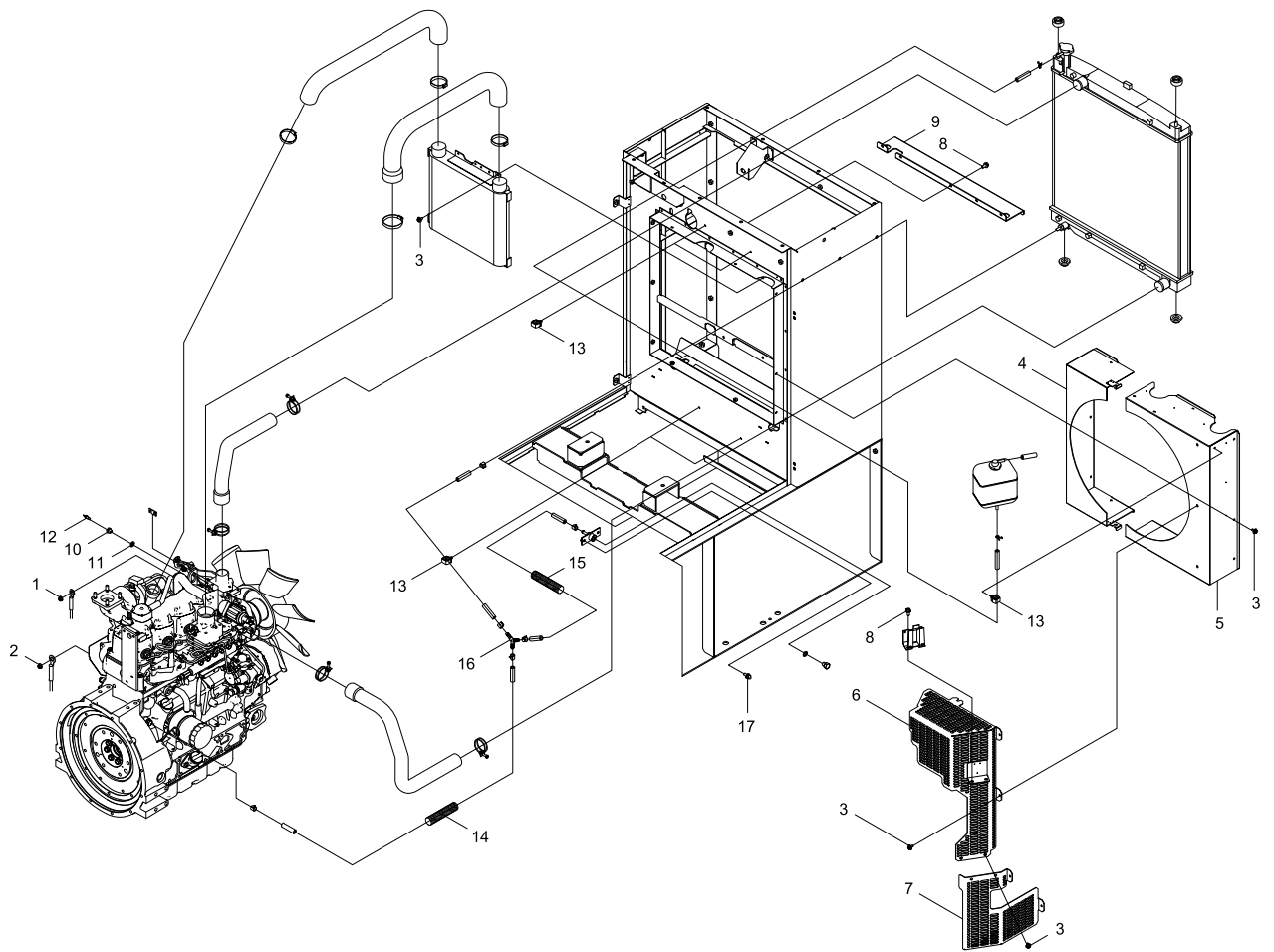
DG50MK-P/ANZ

Published:11/16/2017

TABLE OF CONTENTS

ENGINE, RADIATOR.....	1
RIGHT COVER.....	3
TOP COVER.....	5
GENERATOR.....	7
CONTROL PANEL.....	9
CONTROL BOX.....	11
OUTPUT TERMINAL.....	13
LABEL.....	15
MUFFLER, AIR CLEANER.....	17
FUEL TANK, OIL GUARD.....	19
FUEL TANK AND PIPING.....	21
OIL PIPE.....	23
BONNET.....	25
FRONT COVER.....	27
BASE, FRAME.....	29
LEFT COVER.....	31

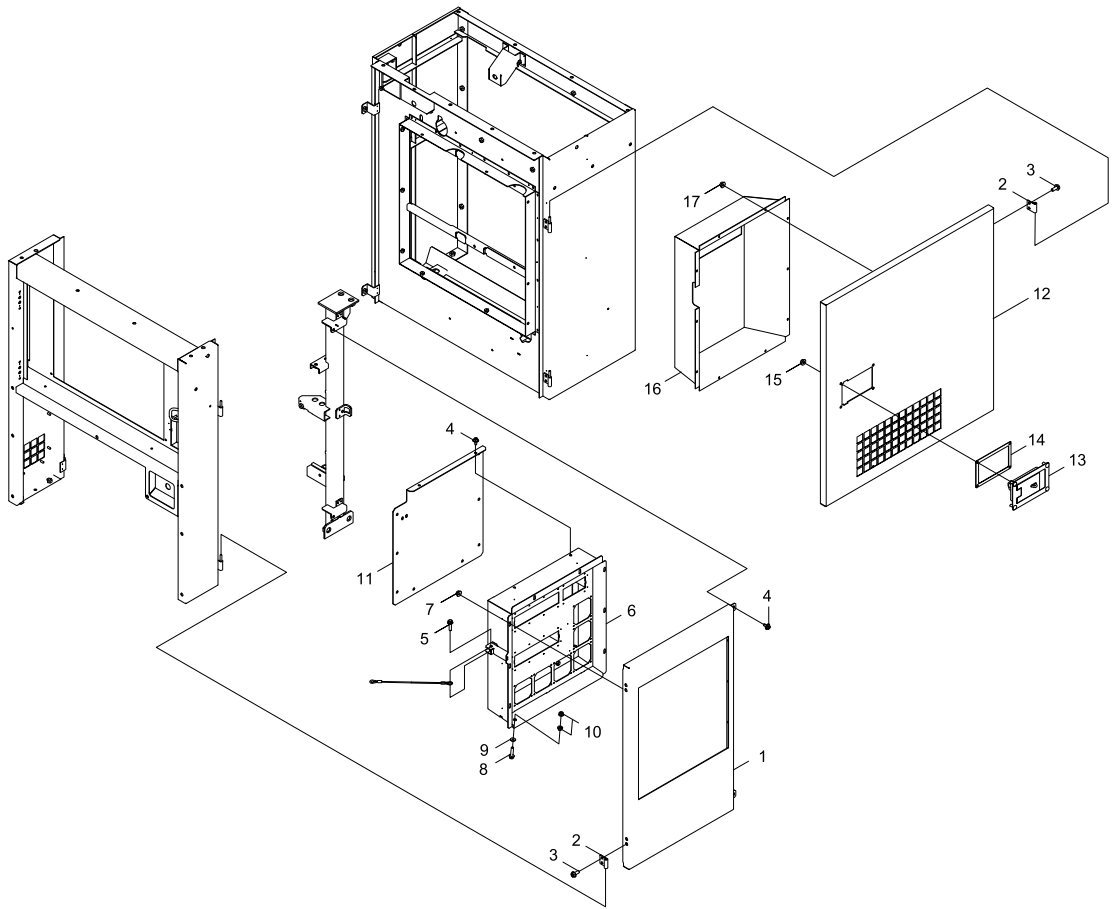
ENGINE, RADIATOR



ENGINE, RADIATOR

KEY NO	LV(+)	Part No	Description	Qty	Standard	Comment
1		V264-000220	FLANGE NUT	1		
2		V265-000290	FLANGE NUT	1		
3		V204-001090	BOLT FT SW	23		
4		G202-000151	DUCT,RADIATOR	1		
5		G202-000160	DUCT,RADIATOR	1		
6		A172-003090	COVER, FAN	1		
7		A172-003100	COVER, FAN	1		
8		V205-001170	BOLT,8	6	M8*20-SPW	
9		G201-000510	BRACKET,RADIATOR	1		
10		V187-000400	NIPPLE	1		
11		V109-000270	GASKET	1		
12		G365-000040	GAUGE	1		
13		V495-002510	BAND	5		
14		V475-005550	TUBE	1		
15		V475-006130	TUBE	1		
16		M601-000170	JOINT	1		
17		V205-001120	BOLT,8	2	BM-8*20 W SW	

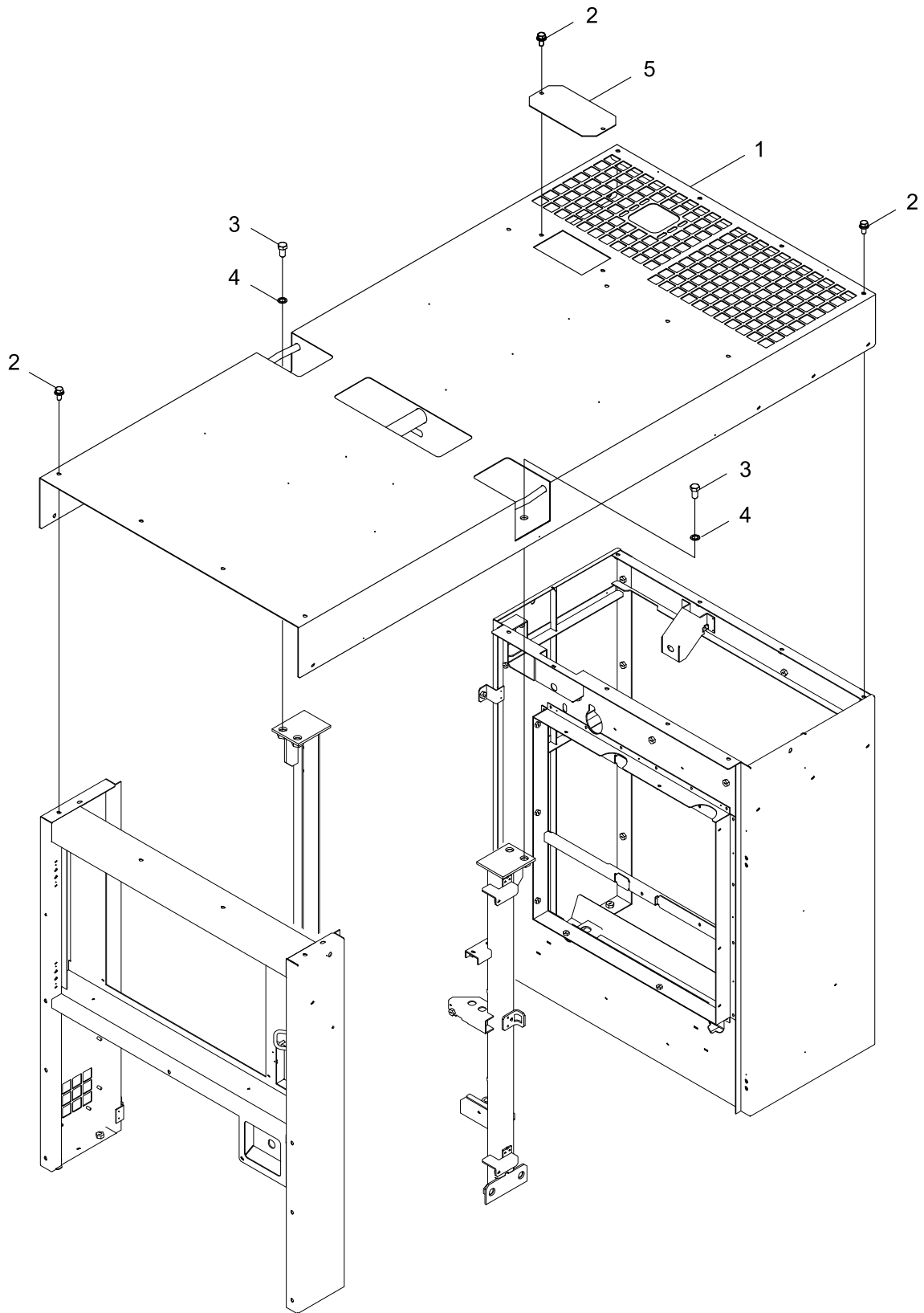
RIGHT COVER



RIGHT COVER

KEY NO	LV(+)	Part No	Description	Qty	Standard	Comment
1		M409-001180	DOOR, SIDE	1		
2		J485-000280	HINGE	4		
3		91083-08020	FLANGE BOLT	8		
4		V204-001090	BOLT FT SW	12		
5		91024-08035	BOLT	1	BM-8*35/W,SW	
6		C160-001590	PANEL,OPERATION	1		
7		V264-000220	FLANGE NUT	8		
8		91034-08040	BOLT SW	1		
9		900602-00008	WASHER 8	1	8.4*17*1.6	
10		V265-000450	NUT,8	2		
11		M470-002980	COVER	1		
12		M407-000070	DOOR,RIGHT	1		
13		C701-000440	LOCK COVER	1		
14		V541-000350	SHEET	1		
15		V265-000290	FLANGE NUT	4		
16		G128-000060	DUCT,AIR	1		
17		V264-000220	FLANGE NUT	10		

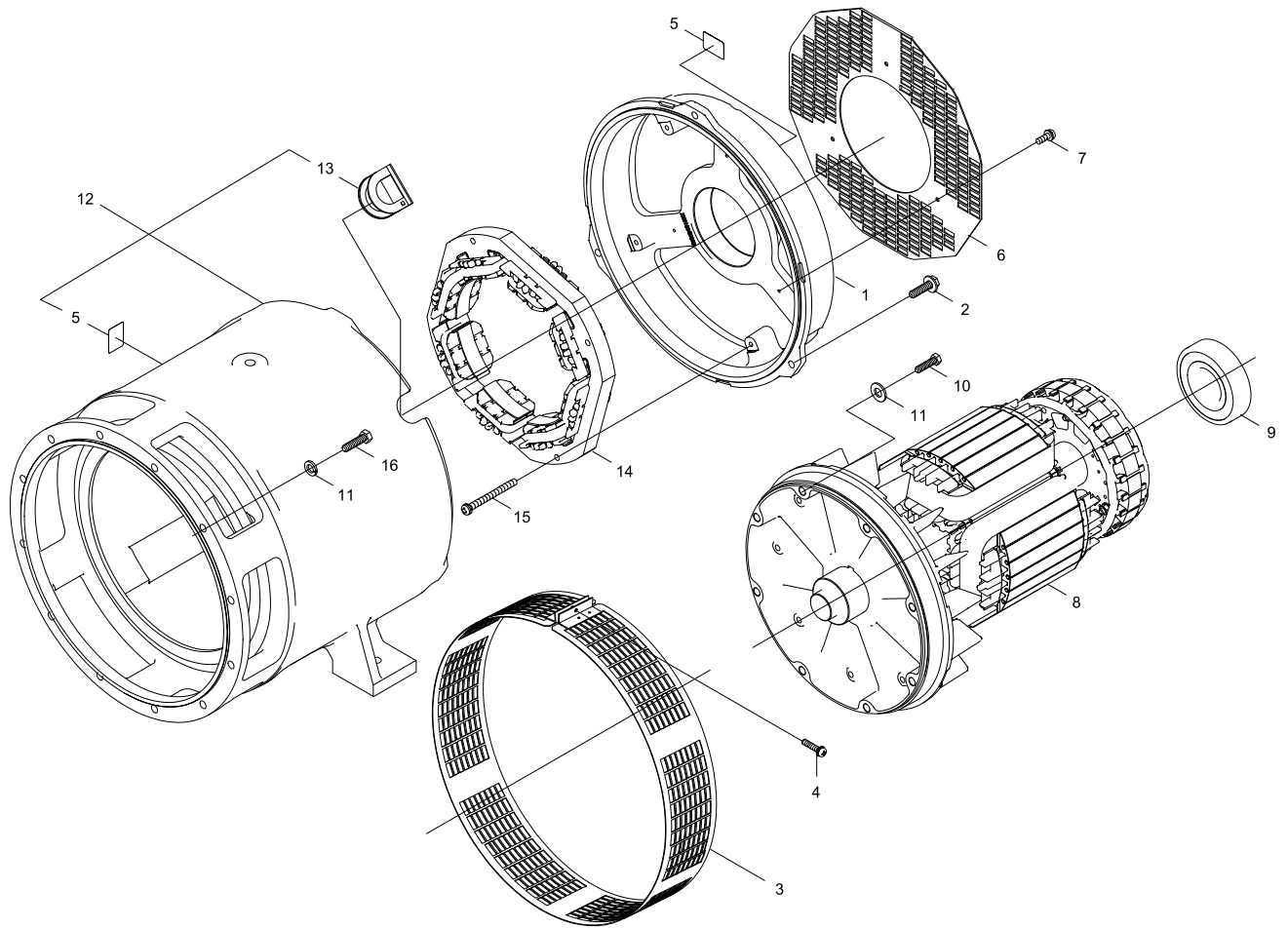
TOP COVER



TOP COVER

KEY NO	LV(+)	Part No	Description	Qty	Standard	Comment
1		J494-000500	BONNET	1		
2		V205-001120	BOLT,8	23	BM-8*20 W SW	
3		900104-16030	BOLT 16*30 SUS	4	16*30 SUS	
4		V109-000210	GASKET	4		
5		J480-000930	LID,COVER	1		

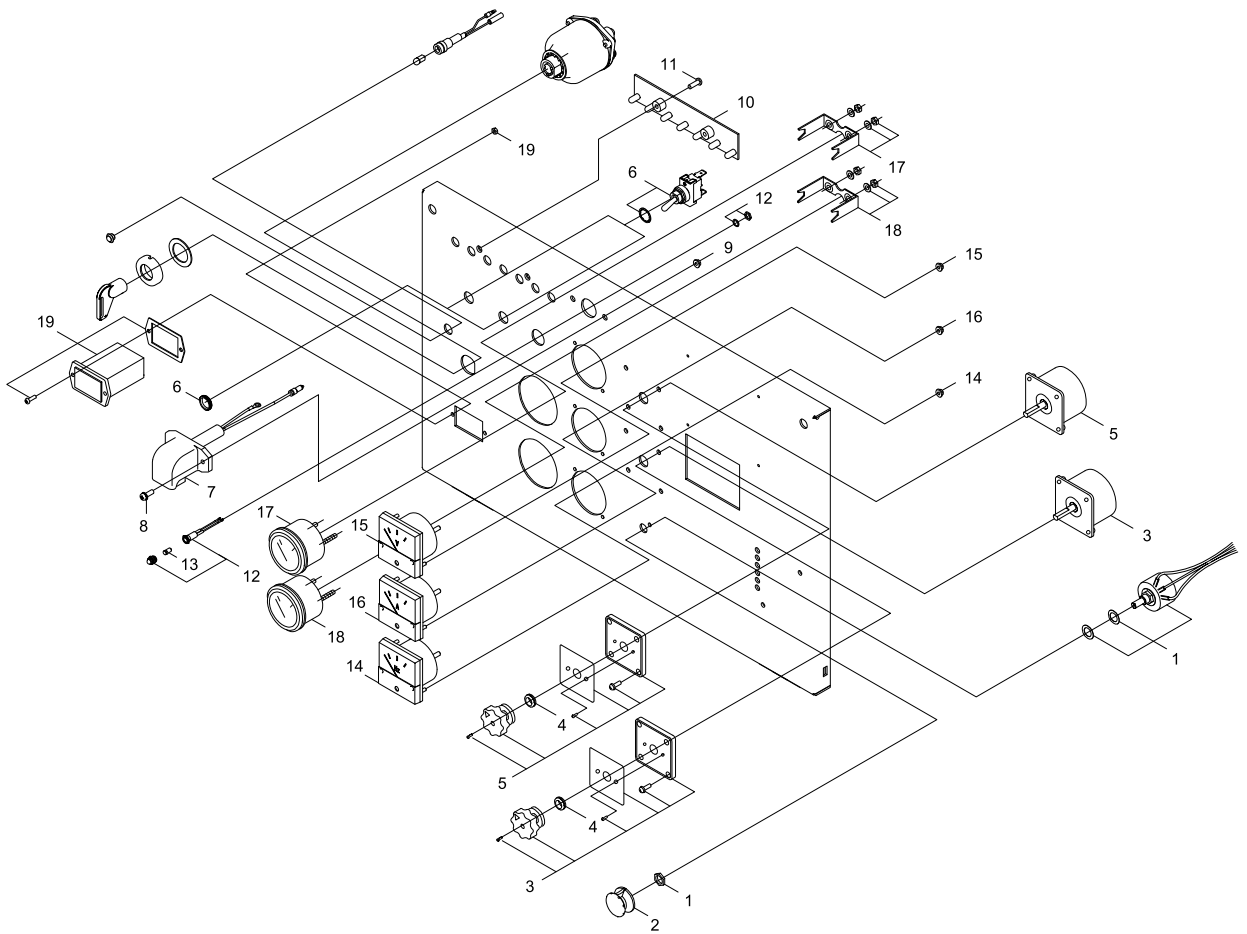
GENERATOR



GENERATOR

KEY NO	LV(+)	Part No	Description	Qty	Standard	Comment
1		M305-000510	HOUSING	1		
2		91022-10035	BOLT SW	3		
3		A172-002160	COVER,FAN	1		
4		91031-04030	BOLT SPW	1		
5		M703-000020	LABEL THERMOMETER	1		
6		M470-000980	COVER	1		
7		91031-05012	BOLT SW	3		
8		M102-000590	ROTOR	1		
9		V592-000160	BALL BEARING	1		
10		91026-10060	BOLT	8	B10*60 10.9	
11		900605-00010	WASHER, SPRING 10	20	10	
12		A041-000680	STATOR ASSEMBLY	1		
13	+	V144-000610	GROMMET	1		
5	+	M703-000020	LABEL THERMOMETER	1		
14		A041-000370	STATOR ASSEMBLY	1		
15		91024-08040	BOLT SW	4		
16		91026-10030	BOLT	12		

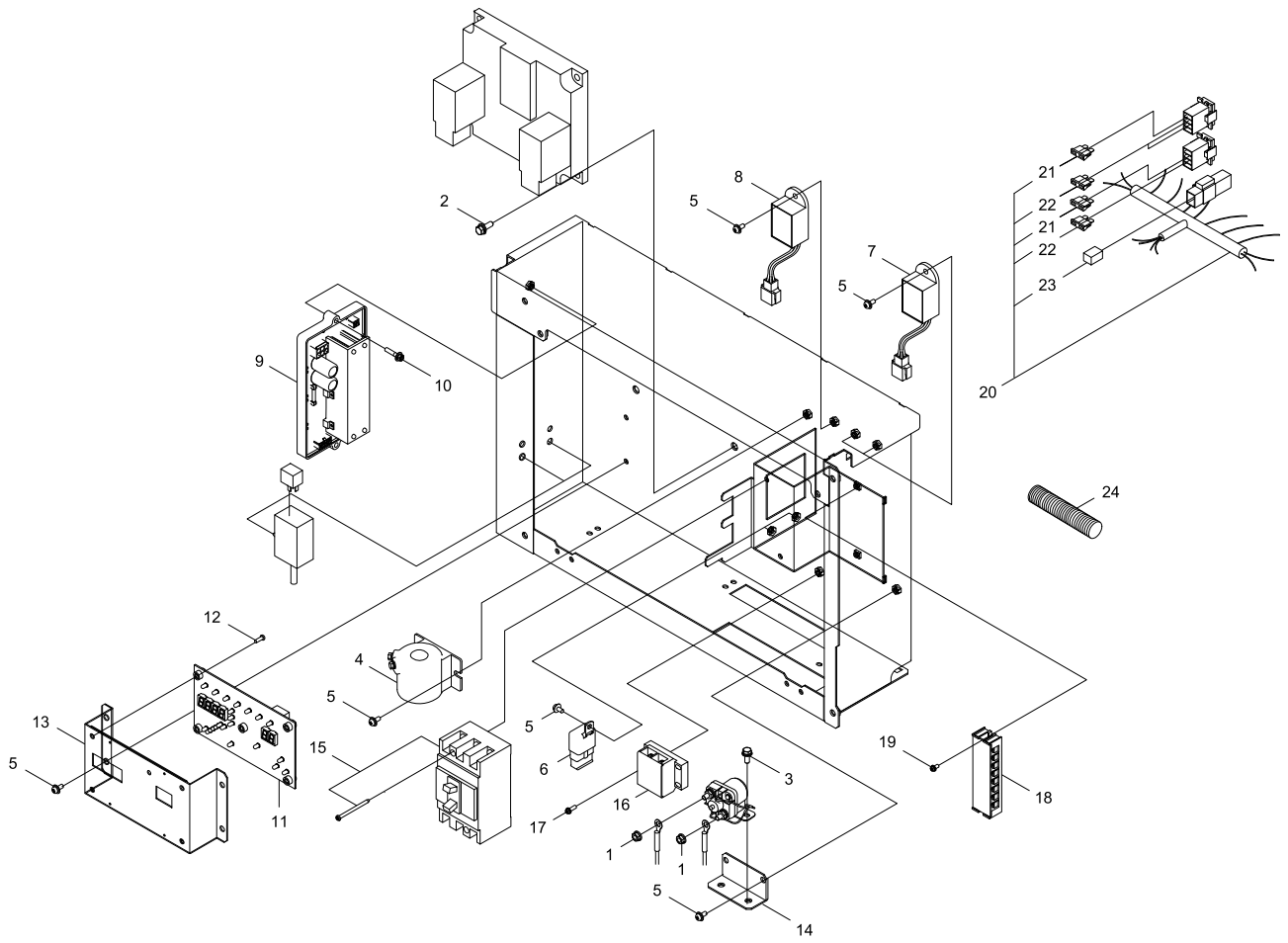
CONTROL PANEL



CONTROL PANEL

KEY NO	LV(+)	Part No	Description	Qty	Standard	Comment
1		M112-000010	VOLUME COMP	1		
2		E145-000060	DIAL	1		
3		G334-001300	SWITCH	1		
4		V144-000530	GROMMET	2		
5		G334-001310	SWITCH	1		
6		A045-000510	TOGGLE SWITCH	2		
7		G327-000400	LAMP,PILOT	1	N6210-60001	
8		900238-04016	SCREW 4*16	2	4*16	
9		V262-000190	FLANGE NUT	2		
10		C124-000230	MODULE, CIRCUIT	1		
11		91461-04014	SCREW	2		
12		G327-000540	LAMP,PILOT	1	AC120V	
13	+	G328-000060	LAMP	1		
14		M109-000410	METER	1		
15		M109-000140	METER (V)	1		
16		M109-000240	METER	1		
17		M109-000210	METER (COOLANT TEMP)	1		
18		G318-000010	FUEL METER	1		
19		G319-000060	HOUR METER	1		

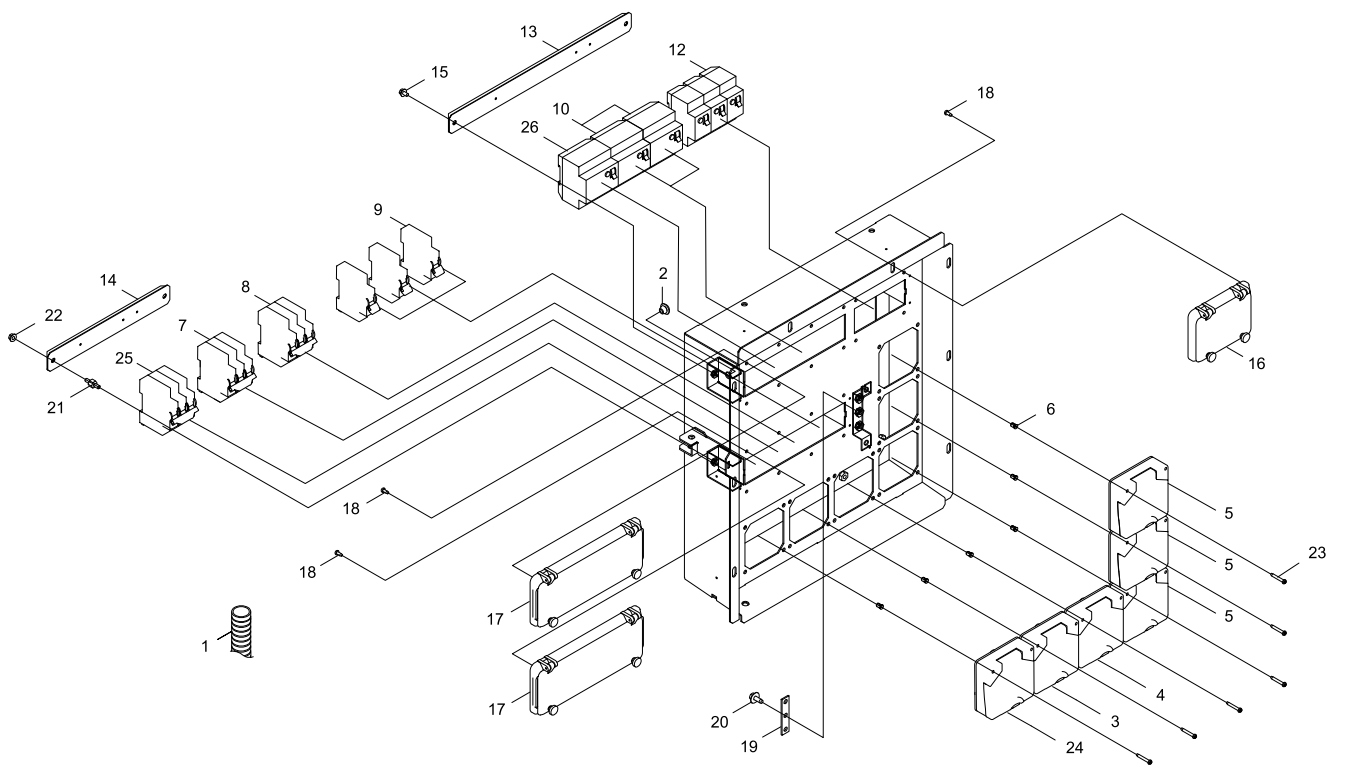
CONTROL BOX



CONTROL BOX

KEY NO	LV(+)	Part No	Description	Qty	Standard	Comment
1		V264-000220	FLANGE NUT	2		
2		900147-08025	BOLT, 8*25	4	8*25	
3		91036-06016	BOLT SW	2		
4		M108-000010	CT	2		
5		91568-05012	SCREW SLPW	15		
6		G343-000490	RELAY	2		
7		G370-000470	PRINT CIRCUIT	2		
8		G370-001320	UNIT,CONTROL	1		
9		G370-001760	UNIT,CONTROL	1		
10		91036-05025	BOLT SW	2		
11		G370-001442	UNIT,CONTROL	1		
12		91461-04012	SCREW	4		
13		C519-006580	STAY	1		
14		C519-006590	STAY	1		
15		M111-000510	BREAKER	1		
16		M308-000540	BLOCK, TERMINAL	1		
17		91564-05025	SCREW SPW	4		
18		M308-000250	TERMINAL BLOCK	1		
19		91564-04016	SCREW SPW	2		
20		G360-002310	HARNESS, WIRE	1		
21	+	G350-000520	FUSE	2	10A	
22	+	G350-000410	FUSE	3	7127-5060 5A	
23	+	G350-000390	FUSE	1		
24		V475-005870	TUBE	1		

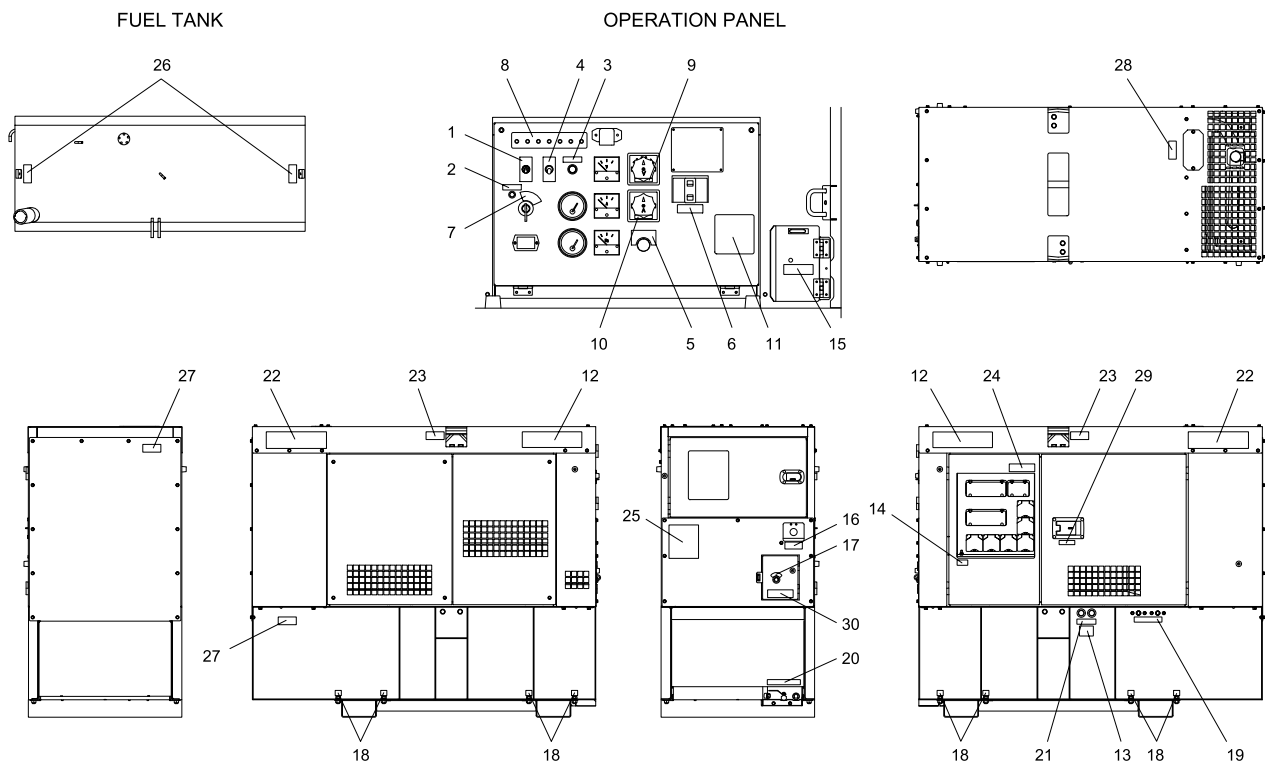
OUTPUT TERMINAL



OUTPUT TERMINAL

KEY NO	LV(+)	Part No	Description	Qty	Standard	Comment
1		V475-008640	TUBE	1	28*L650	
2		V420-003150	CUSHION	1		
3		C154-000210	SOCKET	1		
4		C154-000191	RECEPTACLE	1		
5		C154-000201	RECEPTACLE	3		
6		C690-000150	FASTENER	24		
7		M126-000010	BREAKER	1	4CB332/6 3P3E32A	
8		M126-000000	BREAKER	1	4CB320/6 3P3E20A	
9		M126-000040	BREAKER	3		
10		M111-001400	BREAKER	2	FI-40/4/003	
12		M111-001410	BREAKER	3	2P2E25A	
13		C519-006420	STAY	1		
14		C519-006431	STAY	1		
15		91036-05010	BOLT SW	2		
16		A405-000030	COVER,BREAKER	1	6MODUIES 40985	
17		A405-000050	COVER,BREAKER	2	12MODULE	
18		900245-04010	SCREW 4*10	20	4*10	
19		V150-003140	PLATE,EYE	1		
20		V204-001090	BOLT FT SW	3		
21		V223-000100	BOLT,STUD 5	2		
22		V263-000470	NUT,5	2	M5 ZM D=12	
23		M654-000050		24		
24		C154-000230	PLUG SOCKET	1		
25		M111-000531	BREAKER	1		
26		M111-001440	BREAKER	1		

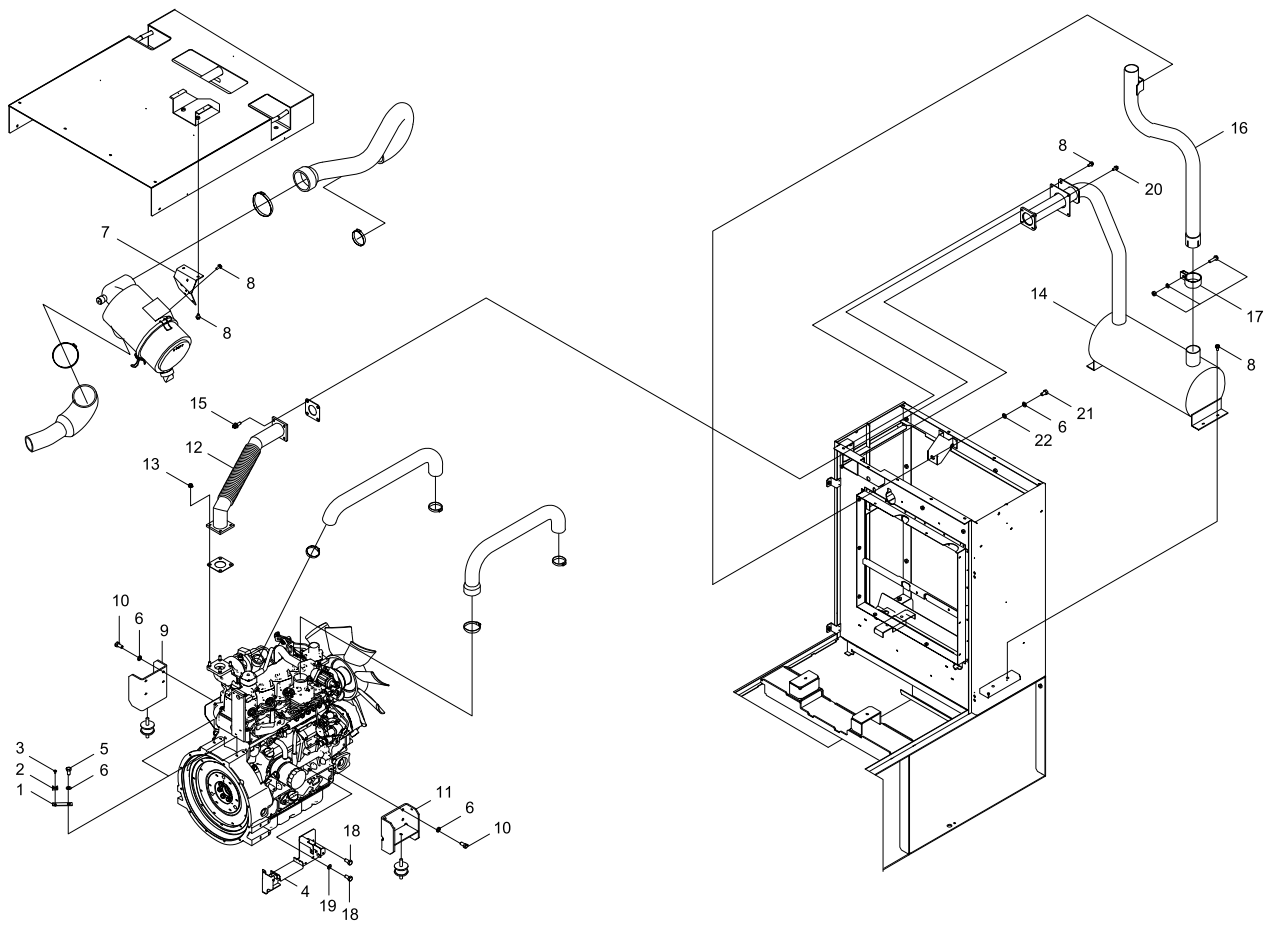
LABEL



LABEL

KEY NO	LV(+)	Part No	Description	Qty	Standard	Comment
1		M707-000090	LABEL INST	1		
2		M707-000100	LABEL INST	1		
3		M704-000650	LABEL INST	1		
4		M704-000660	LABEL INST	1		
5		M704-000670	LABEL INST	1		
6		M704-000680	LABEL INST	1		
7		M704-000690	LABEL INST	1		
8		M707-000880	LABEL,INST	1		
9		M707-000330	LABEL,INST	1		
10		M707-000320	LABEL,INST	1		
11		X524-002850	LABEL DESIGN	1		
12		X504-006320	LABEL,BRAND	2		
13		M704-002440	LABEL,INST	1		
14		M704-001400	LABEL INST	1		
15		M707-000060	LABEL INST	1		
16		M707-000070	LABEL INST	1		
17		M707-000370	LABEL,INST	1		
18		M707-000380	LABEL,INST	8		
19		M707-000390	LABEL,INST	1		
20		M707-000400	LABEL,INST	1		
21		M707-000410	LABEL,INST	1		
22		M705-001060	LABEL, FEATURE	2		
23		X505-007550	LABEL,CAUTION	2		
24		X505-007560	LABEL,CAUTION	1		
25		X505-007571	LABEL,CAUTION	1		
26		X505-007820	LABEL,CAUTION	2		
27		X505-007830	LABEL,CAUTION	2		
28		X505-007840	LABEL,CAUTION	1		
29		X505-007630	LABEL,CAUTION	1		
30		X505-007650	LABEL,CAUTION	1		

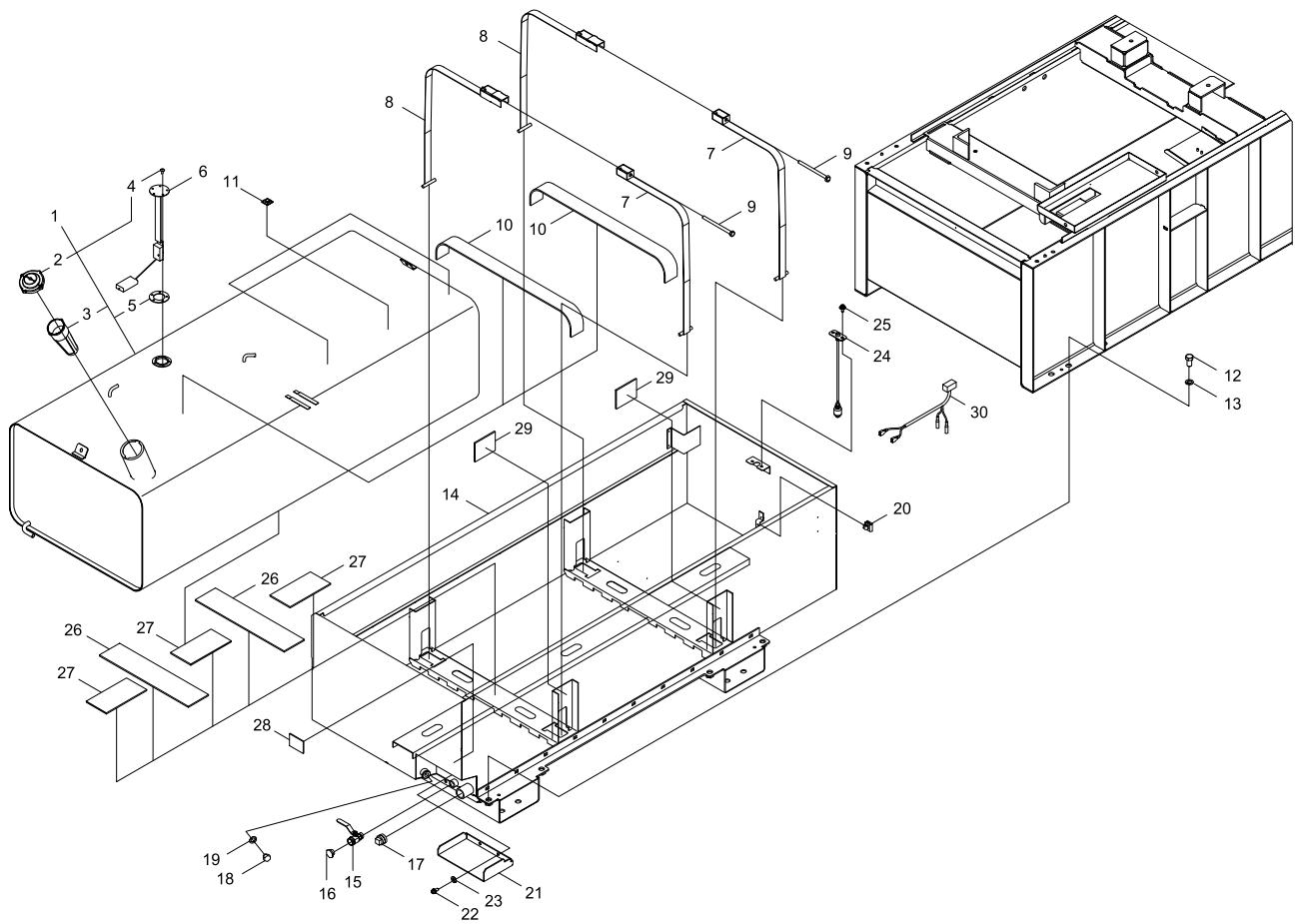
MUFFLER, AIR CLEANER



MUFFLER, AIR CLEANER

KEY NO	LV(+)	Part No	Description	Qty	Standard	Comment
1		C519-002460	STAY	2		
2		M416-000010	TIE MOUNT	2		
3		91343-05012	SCREW	2		
4		C519-004950	STAY	1		
5		V207-000100	BOLT	2		
6		900605-00012	WASHER, SPRING 12	11	12	
7		G211-000290	STAY,CLEANER	1		
8		V205-001170	BOLT,8	12	M8*20-SPW	
9		G121-000400	STAY,ENGINE	1		
10		900101-12025	BOLT 12*25	8	12*25 P1.25	
11		G121-000410	STAY,ENGINE	1		
12		G231-000820	PIPE,EXHAUST	1		
13		V266-000110	FLANGE NUT	4		
14		G230-000410	MUFFLER,EXH	1		
15		900147-08030	BOLT, 8*30	4	8*30	
16		G231-000870	PIPE,EXHAUST	1		
17		V495-002840	BAND	1		
18		91010-10016	BOLT	4		
19		900605-00010	WASHER, SPRING 10	3	10	
20		V204-001090	BOLT FT SW	2		
21		91000-12022	BOLT	1		
22		900617-00012	WASHER 12	1	12(13*21*2.5)	

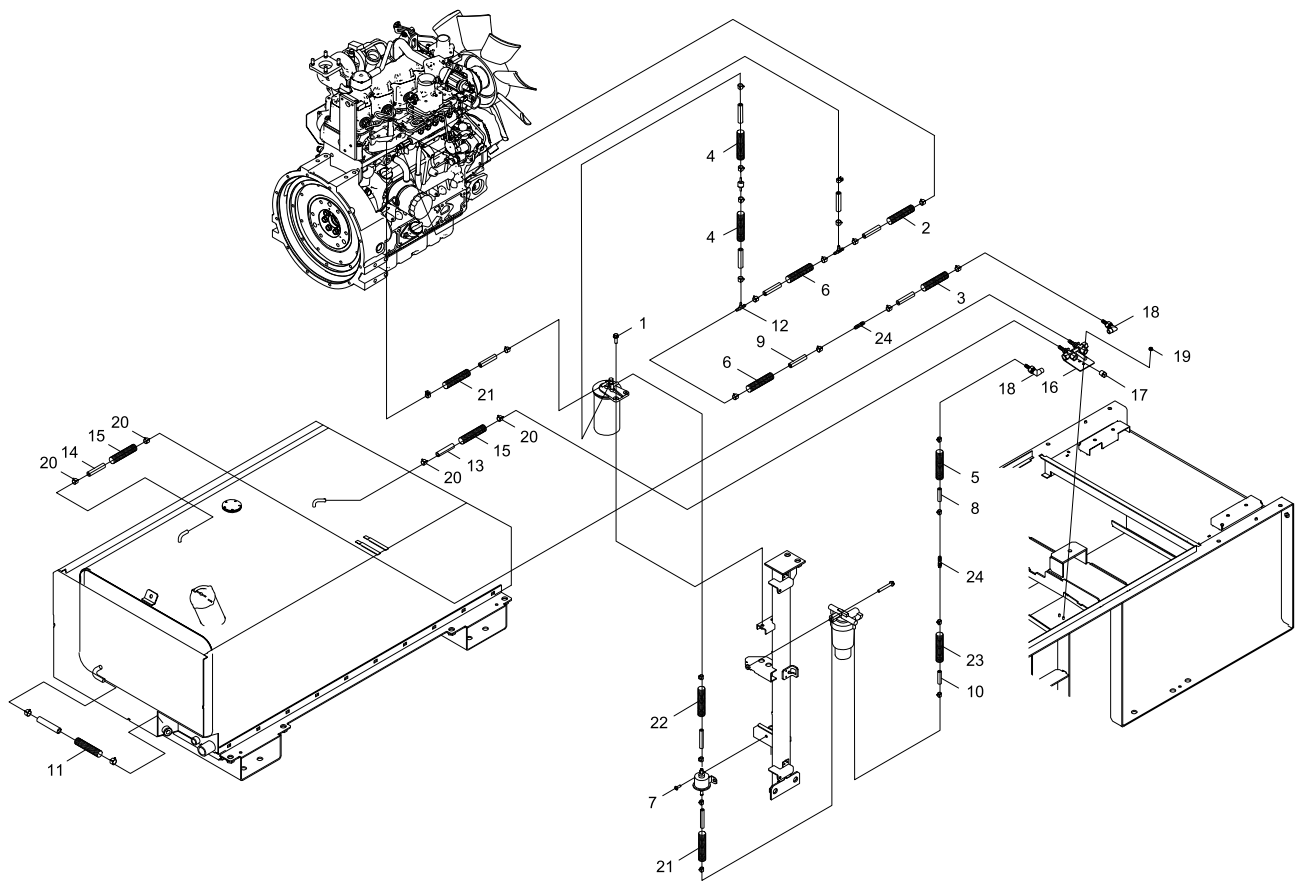
FUEL TANK, OIL GUARD



FUEL TANK, OIL GUARD

KEY NO	LV(+)	Part No	Description	Qty	Standard	Comment
1		G250-000861	TANK,FUEL	1		
2	+	G255-000010	TANK CAP	1		
3	+	A369-000160	STRAINER	1		
4	+	91564-05010	SCREW SPW	5		
5	+	K221-000030	PACKING	1		
6		E325-000080	FUEL GAUGE	1		
7		A392-000240	BAND, FUEL TANK	2		
8		A392-000230	BAND, FUEL TANK	2		
9		V206-000520	BOLT,10	2	M10X140	
10		V420-003920	CUSHION	2	T5*60*800	
11		M416-000040	TIE MOUNT	5		
12		91098-16025	BOLT	8	B-16*25	
13		92229-16000	WASHER	8	W-16	
14		J447-001390	GUARD	1		
26	+	V420-003930	CUSHION	2	T5*100*440	
27	+	V420-003060	PAD	3		
28	+	M700-000010	PAD	1		
29	+	V420-003050	PAD	2		
15		E265-000190	VALVE	1	BV23-04	
16		E328-000220	PLUG,DRAIN	1		
17		E328-000230	PLUG,DRAIN	1		
18		E328-000140	DRAIN PLUG	1		
19		V106-000110	SEAL WASHER	1		
20		V490-001110	CLIP	1		
21		J447-001260	GUARD	1		
22		91098-08020	BOLT	2	B-8*20	
23		92229-08000	WASHER	2	W-8	
24		G334-001261	SWITCH	1		
25		V204-001090	BOLT FT SW	2		
30		C130-000450	HARNESS, WIRE	1		

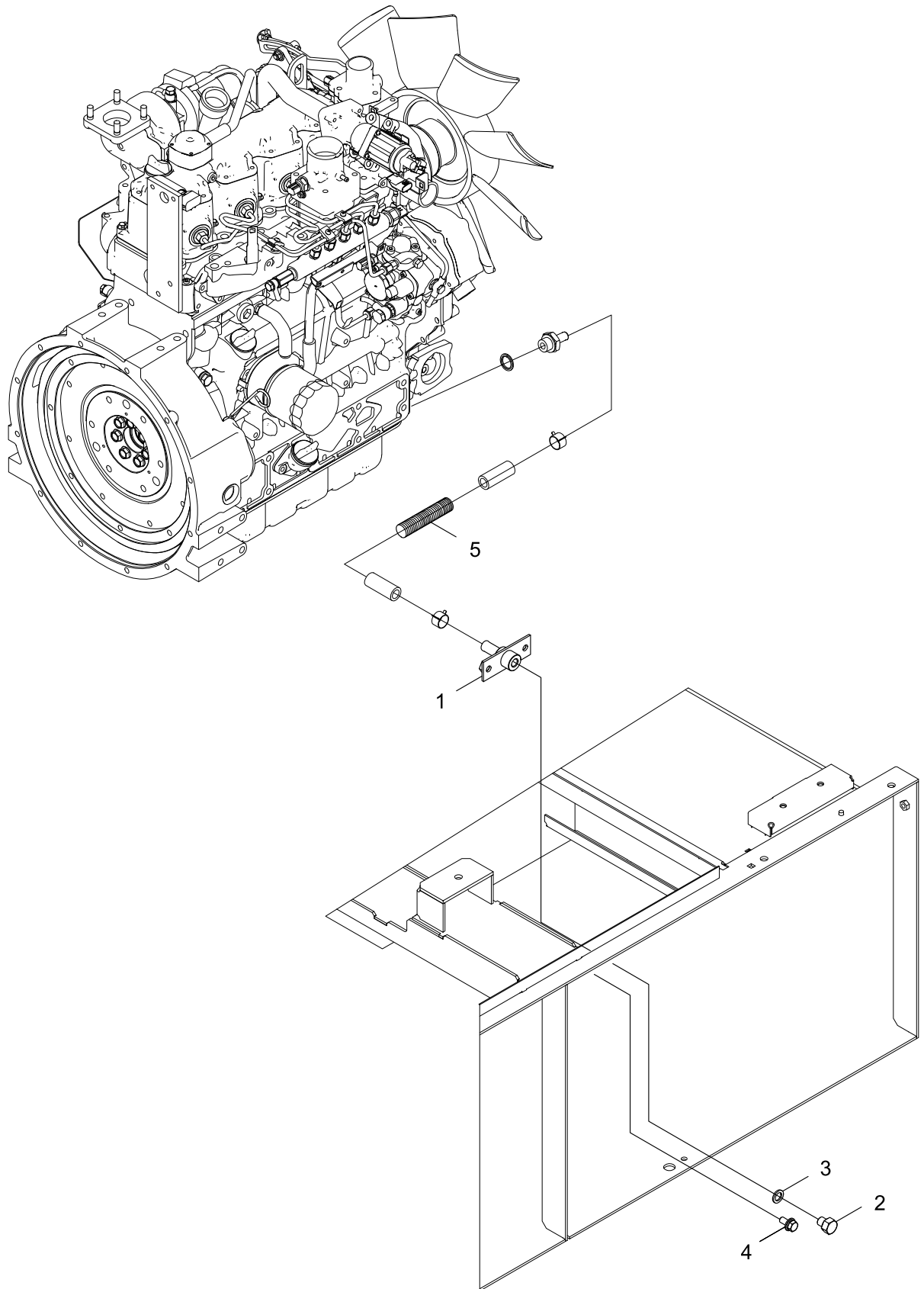
FUEL TANK AND PIPING



FUEL TANK AND PIPING

KEY NO	LV(+)	Part No	Description	Qty	Standard	Comment
1		900147-08030	BOLT, 8*30	2	8*30	
2		V475-006260	TUBE	1		
3		V475-005380	TUBE	1		
4		V475-004710	TUBE	2		
5		V475-008810	TUBE	1		
6		V475-008820	TUBE	2		
7		900216-06014	SCREW 6*14	2	6*14	
8		K400-003030	HOSE	1		
9		K400-003040	HOSE	1		
10		K400-003050	HOSE	1		
11		V475-005320	TUBE	1		
12		C243-000000	TEE, PIPE	1		
13		K401-000550	HOSE	1		
14		K401-000560	HOSE	1		
15		V476-000250	TUBE	2		
16		E265-000120	COCK	1		
17		E328-000130	DRAIN PLUG	2		
18		E237-000140	ELBOW	2		
19		V264-000220	FLANGE NUT	2		
20		V495-001660	HOSE CLAMP	4		
21		V475-006000	TUBE	2		
22		V475-006140	TUBE	1		
23		V475-006130	TUBE	1		
24		M601-000040	JOINT	2		

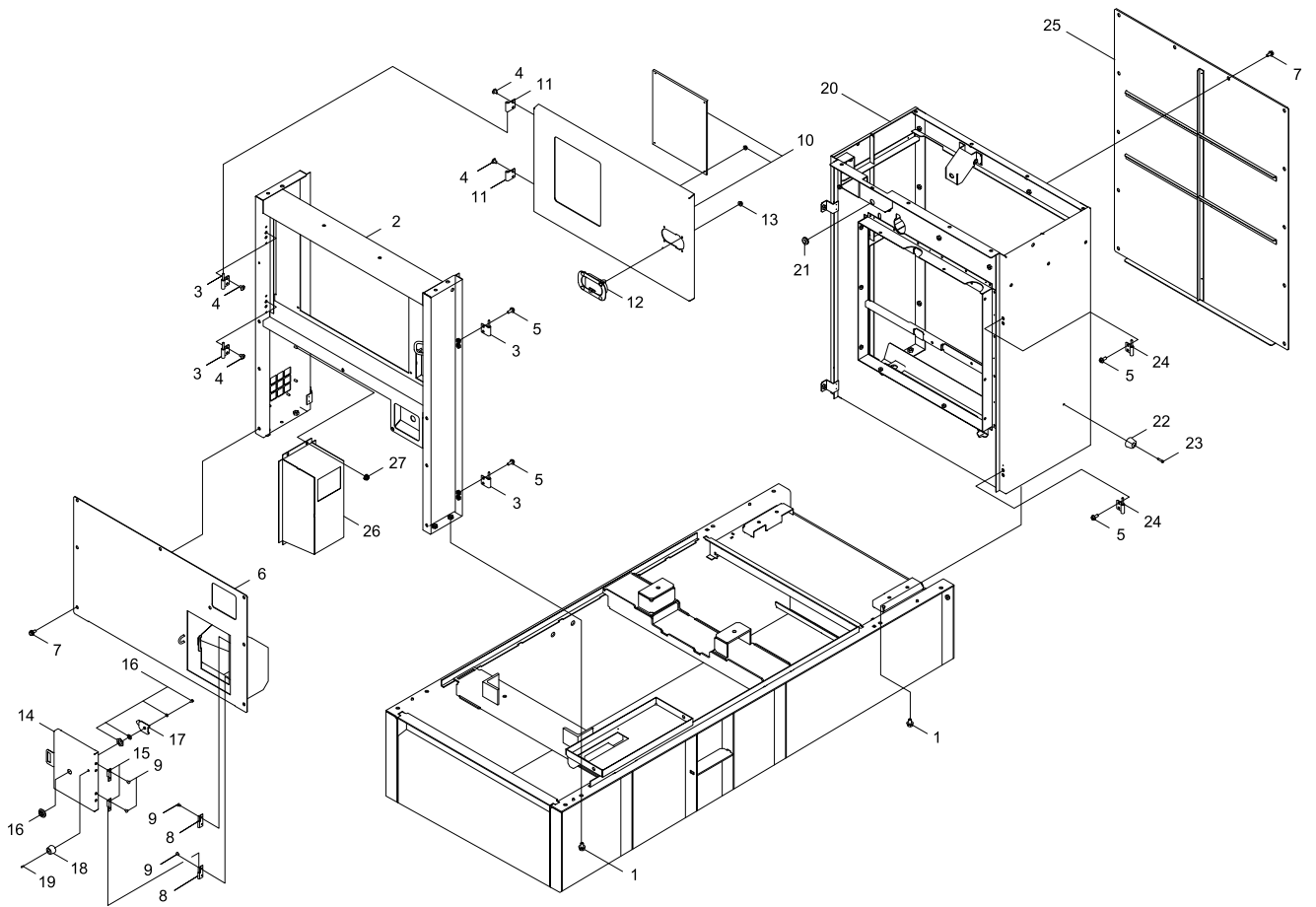
OIL PIPE



OIL PIPE

KEY NO	LV(+)	Part No	Description	Qty	Standard	Comment
1		C153-000570	SOCKET	1		
2		E328-000320	PLUG,DRAIN	1		
3		K206-000030	PACKING,DRAIN CAP	1		
4		V205-001120	BOLT,8	2	BM-8*20 W SW	
5		V475-007400	TUBE	1	22*L400	

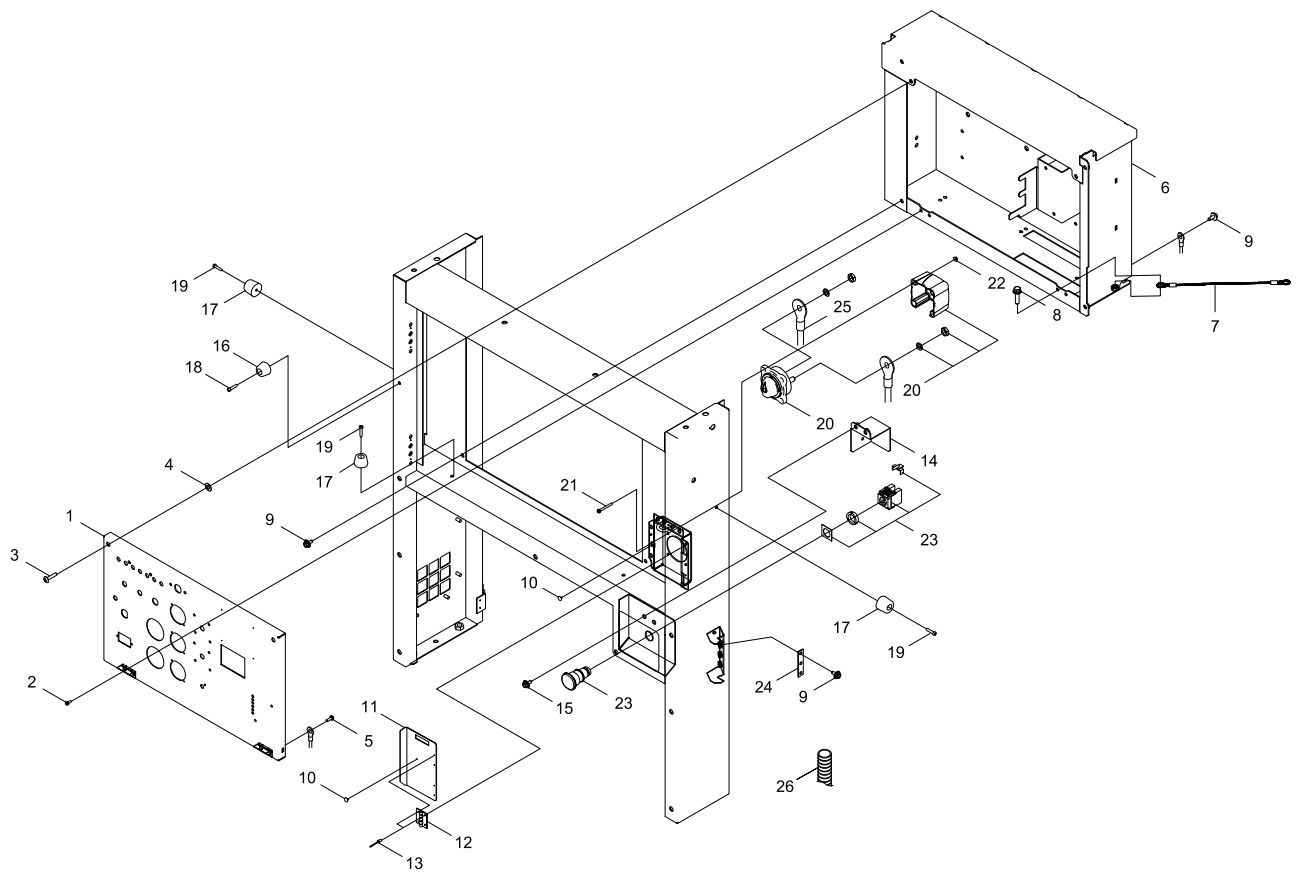
BONNET



BONNET

KEY NO	LV(+)	Part No	Description	Qty	Standard	Comment
1		91034-10020	BOLT SPW	8		
2		J494-000980	BONNET	1		
3		J485-000250	HINGE	4		
4		91318-08020	SCREW TRUSS	8		
5		91083-08020	FLANGE BOLT	8		
6		J500-001110	PANEL	1		
7		V205-001120	BOLT,8	20	BM-8*20 W SW	
8		J485-000310	HINGE	2		
9		91447-04012	SCREW TAPPING	8		
10		M040-000470	FRONT DOOR,ASM	1		
11		J485-000280	HINGE	2		
12		C701-000420	LOCK COVER	1		
13		V264-000220	FLANGE NUT	4		
14		M470-001450	COVER	1		
15		J485-000330	HINGE	2		
16		C701-000430	HANDLE	1		
17		G257-000230	LOCK LEVER	1		
18		V420-003070	STAND RUBBER	1		
19		91381-04020	SCREW TAPPING	1		
20		J494-000491	BONNET	1		
21		V144-000440	GROMMET	1		
22		V420-003510	STAND RUBBER	1		
23		91381-04030	SCREW TAPPING	1		
24		J485-000260	HINGE	2		
25		M415-000590	PLATE,REAR	1		
26		G128-000080	DUCT,AIR	1		
27		V264-000220	FLANGE NUT	7		

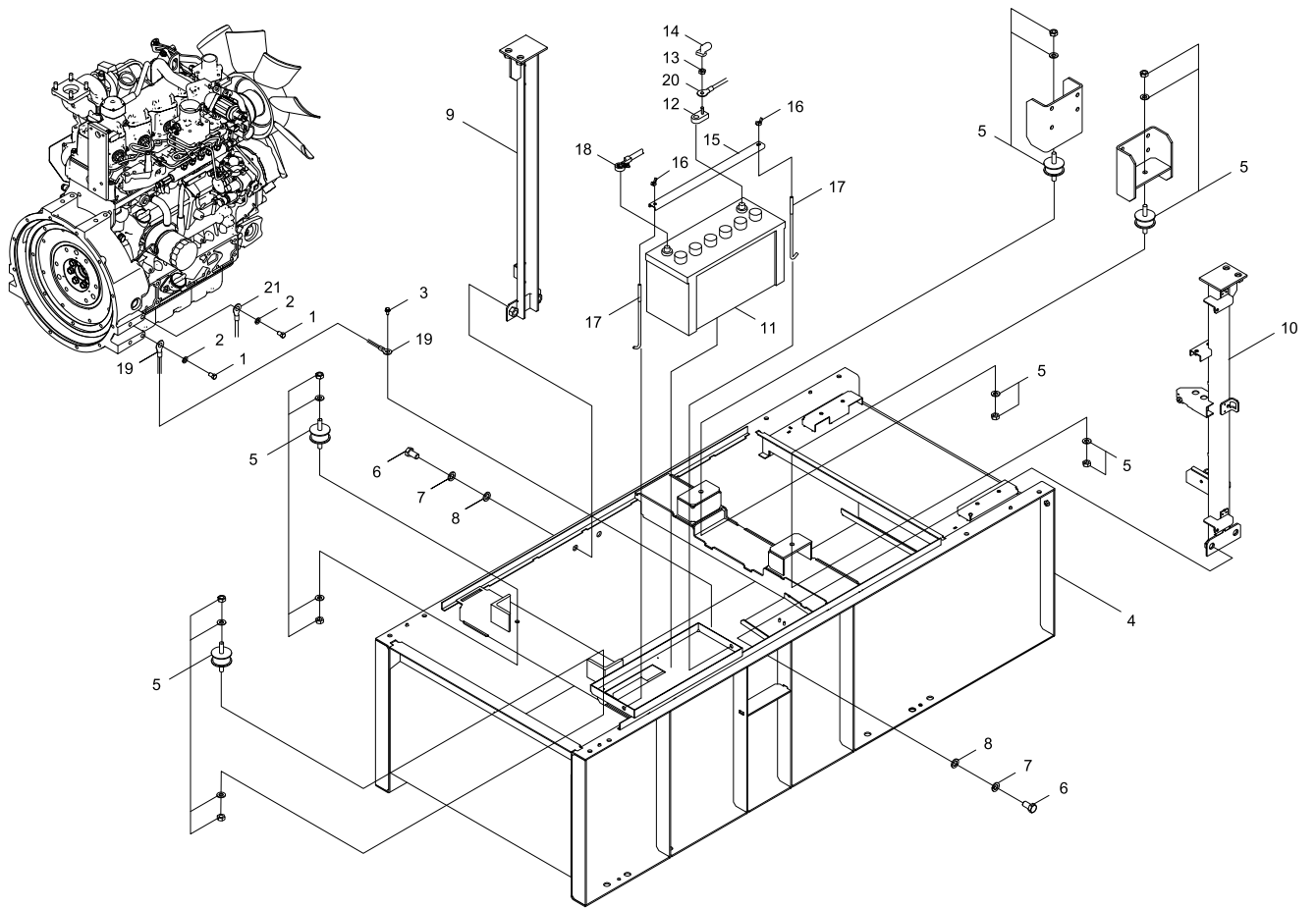
FRONT COVER



FRONT COVER

KEY NO	LV(+)	Part No	Description	Qty	Standard	Comment
1		C160-001600	PANEL,OPERATION	1		
2		91566-04012	SCREW SPW	4		
3		91318-06030	SCREW TRUSS	2		
4		V324-000010	WASHER	2		
5		91568-05012	SCREW SLPW	1		
6		J430-001360	BOX, CONTROL	1		
7		C617-000550	STOPPER	1		
8		91024-08035	BOLT	1	BM-8*35/W,SW	
9		V204-001090	BOLT FT SW	8		
10		V420-003200	CUSHION	2		
11		A447-000110	COVER,SWITCH KNOB	1		
12		J485-000570	HINGE	2		
13		V649-000130	BLIND RIVET	8		
14		M470-002970	COVER	1		
15		V204-001600	BOLT,6	2	M6*16	
16		V420-003070	STAND RUBBER	1		
17		V420-003510	STAND RUBBER	4		
18		91381-04020	SCREW TAPPING	1		
19		91381-04030	SCREW TAPPING	4		
20		G334-001320	SWITCH	1		
21		91564-04016	SCREW SPW	4		
22		V262-000190	FLANGE NUT	4		
23		G334-000870	SWITCH	1		
24		V150-003140	PLATE,EYE	1		
25		M386-000430	LEAD	1	40MM2 L950 B/ Y	
26		V475-006280	TUBE	1		

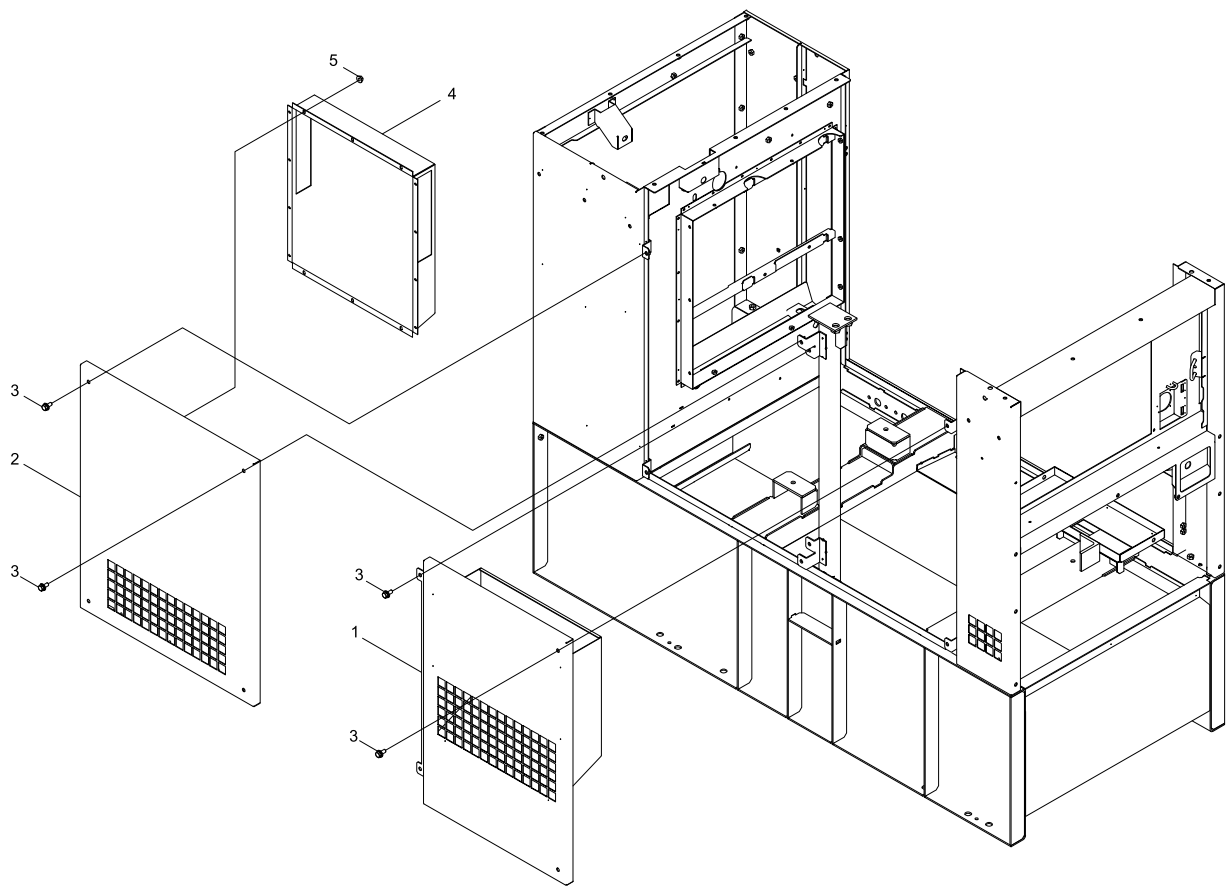
BASE, FRAME



BASE, FRAME

KEY NO	LV(+)	Part No	Description	Qty	Standard	Comment
1		V207-000100	BOLT	2		
2		900617-00012	WASHER 12	2	12(13*21*2.5)	
3		V205-001170	BOLT,8	1	M8*20-SPW	
4		J405-003320	FRAME	1		
5		V420-003040	AV RUBBER	4		
6		900104-16030	BOLT 16*30 SUS	4	16*30 SUS	
7		92235-16000	SPRING WASHER	4		
8		92222-16000	WASHER	4		
9		J415-000530	STAY,BONNET	1		
10		J415-000590	STAY,BONNET	1		
11		V481-000380	BATTERY	1		
12		V486-000240	TERMINAL	1		
13		V265-000310	NUT	1		
14		G305-000030	TERMINAL CAP	1		
15		G303-000341	HOLDER,BATTERY	1		
16		92190-08000	WING NUT	2		
17		V240-000240	BOLT,HOOK	2		
18		M386-000440	LEAD	1	40MM2 L480 B/ Y	
19		M384-000020	LEAD	1		
20		M380-000060	LEAD WIRE	1		
21		M386-000580	LEAD	1	38MM2 L650 G/ Y	

LEFT COVER



LEFT COVER

KEY NO	LV(+)	Part No	Description	Qty	Standard	Comment
1		J500-001120	PANEL	1		
2		J500-000140	PANEL	1		
3		V205-001120	BOLT,8	8	BM-8*20 W SW	
4		G128-000070	DUCT,AIR	1		
5		V264-000220	FLANGE NUT	14		

NUMERICAL PARTS INDEX

Part No	Part description	Page	Part No	Part description	Page	Part No	Part description	Page
900101-12025	BOLT 12*25	18	91564-04016	SCREW SPW	28	E237-000140	ELBOW	22
900104-16030	BOLT 16*30 SUS	6	91564-05010	SCREW SPW	20	E265-000120	COCK	22
900104-16030	BOLT 16*30 SUS	30	91564-05025	SCREW SPW	12	E265-000190	VALVE	20
900147-08025	BOLT, 8*25	12	91566-04012	SCREW SPW	28	E325-000080	FUEL GAUGE	20
900147-08030	BOLT, 8*30	18	91568-05012	SCREW SLPW	12	E328-000130	DRAIN PLUG	22
900147-08030	BOLT, 8*30	22	91568-05012	SCREW SLPW	28	E328-000140	DRAIN PLUG	20
900216-06014	SCREW 6*14	22	92190-08000	WING NUT	30	E328-000220	PLUG,DRAIN	20
900238-04016	SCREW 4*16	10	92222-16000	WASHER	30	E328-000230	PLUG,DRAIN	20
900245-04010	SCREW 4*10	14	92229-08000	WASHER	20	E328-000320	PLUG,DRAIN	24
900602-00008	WASHER 8	4	92229-16000	WASHER	20	G121-000400	STAY,ENGINE	18
900605-00010	WASHER, SPRING 10	8	92235-16000	SPRING WASHER	30	G121-000410	STAY,ENGINE	18
900605-00010	WASHER, SPRING 10	18	A041-000370	STATOR ASSEMBLY	8	G128-000060	DUCT,AIR	4
900605-00012	WASHER, SPRING 12	18	A041-000680	STATOR ASSEMBLY	8	G128-000070	DUCT,AIR	32
900617-00012	WASHER 12	18	A045-000510	TOGGLE SWITCH	10	G128-000080	DUCT,AIR	26
900617-00012	WASHER 12	30	A172-002160	COVER,FAN	8	G201-000510	BRACKET,RADIATOR	2
91000-12022	BOLT	18	A172-003090	COVER, FAN	2	G202-000151	DUCT,RADIATOR	2
91010-10016	BOLT	18	A172-003100	COVER, FAN	2	G202-000160	DUCT,RADIATOR	2
91022-10035	BOLT SW	8	A369-000160	STRAINER	20	G211-000290	STAY,CLEANER	18
91024-08035	BOLT	4	A392-000230	BAND, FUEL TANK	20	G230-000410	MUFFLER,EXH	18
91024-08035	BOLT	28	A392-000240	BAND, FUEL TANK	20	G231-000820	PIPE,EXHAUST	18
91024-08040	BOLT SW	8	A405-000030	COVER,BREAKER	14	G231-000870	PIPE,EXHAUST	18
91026-10030	BOLT	8	A405-000050	COVER,BREAKER	14	G250-000861	TANK,FUEL	20
91026-10060	BOLT	8	A447-000110	COVER,SWITCH KNOB	28	G255-000010	TANK CAP	20
91031-04030	BOLT SPW	8	C124-000230	MODULE, CIRCUIT	10	G257-000230	LOCK LEVER	26
91031-05012	BOLT SW	8	C130-000450	HARNESS, WIRE	20	G303-000341	HOLDER,BATTERY	30
91034-08040	BOLT SW	4	C153-000570	SOCKET	24	G305-000030	TERMINAL CAP	30
91034-10020	BOLT SPW	26	C154-000191	RECEPTACLE	14	G318-000010	FUEL METER	10
91036-05010	BOLT SW	14	C154-000201	RECEPTACLE	14	G319-000060	HOURLY METER	10
91036-05025	BOLT SW	12	C154-000210	SOCKET	14	G327-000400	LAMP,PILOT	10
91036-06016	BOLT SW	12	C154-000230	PLUG SOCKET	14	G327-000540	LAMP,PILOT	10
91083-08020	FLANGE BOLT	4	C160-001590	PANEL,OPERATION	4	G328-000060	LAMP	10
91083-08020	FLANGE BOLT	26	C160-001600	PANEL,OPERATION	28	G334-000870	SWITCH	28
91098-08020	BOLT	20	C243-000000	TEE, PIPE	22	G334-001261	SWITCH	20
91098-16025	BOLT	20	C519-002460	STAY	18	G334-001300	SWITCH	10
91318-06030	SCREW TRUSS	28	C519-004950	STAY	18	G334-001310	SWITCH	10
91318-08020	SCREW TRUSS	26	C519-006420	STAY	14	G334-001320	SWITCH	28
91343-05012	SCREW	18	C519-006431	STAY	14	G343-000490	RELAY	12
91381-04020	SCREW TAPPING	26	C519-006580	STAY	12	G350-000390	FUSE	12
91381-04020	SCREW TAPPING	28	C519-006590	STAY	12	G350-000410	FUSE	12
91381-04030	SCREW TAPPING	26	C617-000550	STOPPER	28	G350-000520	FUSE	12
91381-04030	SCREW TAPPING	28	C690-000150	FASTENER	14	G360-002310	HARNESS, WIRE	12
91447-04012	SCREW TAPPING	26	C701-000420	LOCK COVER	26	G365-000040	GAUGE	2
91461-04012	SCREW	12	C701-000430	HANDLE	26	G370-000470	PRINT CIRCUIT	12
91461-04014	SCREW	10	C701-000440	LOCK COVER	4	G370-001320	UNIT,CONTROL	12
91564-04016	SCREW SPW	12	E145-000060	DIAL	10	G370-001442	UNIT,CONTROL	12

NUMERICAL PARTS INDEX

Part No	Part description	Page	Part No	Part description	Page	Part No	Part description	Page
G370-001760	UNIT,CONTROL	12	M308-000250	TERMINAL BLOCK	12	V144-000530	GROMMET	10
J405-003320	FRAME	30	M308-000540	BLOCK, TERMINAL	12	V144-000610	GROMMET	8
J415-000530	STAY,BONNET	30	M380-000060	LEAD WIRE	30	V150-003140	PLATE,EYE	14
J415-000590	STAY,BONNET	30	M384-000020	LEAD	30	V150-003140	PLATE,EYE	28
J430-001360	BOX, CONTROL	28	M386-000430	LEAD	28	V187-000400	NIPPLE	2
J447-001260	GUARD	20	M386-000440	LEAD	30	V204-001090	BOLT FT SW	2
J447-001390	GUARD	20	M386-000580	LEAD	30	V204-001090	BOLT FT SW	4
J480-000930	LID,COVER	6	M407-000070	DOOR,RIGHT	4	V204-001090	BOLT FT SW	14
J485-000250	HINGE	26	M409-001180	DOOR, SIDE	4	V204-001090	BOLT FT SW	18
J485-000260	HINGE	26	M415-000590	PLATE,REAR	26	V204-001090	BOLT FT SW	20
J485-000280	HINGE	4	M416-000010	TIE MOUNT	18	V204-001090	BOLT FT SW	28
J485-000280	HINGE	26	M416-000040	TIE MOUNT	20	V204-001600	BOLT,6	28
J485-000310	HINGE	26	M470-000980	COVER	8	V205-001120	BOLT,8	2
J485-000330	HINGE	26	M470-001450	COVER	26	V205-001120	BOLT,8	6
J485-000570	HINGE	28	M470-002970	COVER	28	V205-001120	BOLT,8	24
J494-000491	BONNET	26	M470-002980	COVER	4	V205-001120	BOLT,8	26
J494-000500	BONNET	6	M601-000040	JOINT	22	V205-001120	BOLT,8	32
J494-000980	BONNET	26	M601-000170	JOINT	2	V205-001170	BOLT,8	2
J500-000140	PANEL	32	M654-000050		14	V205-001170	BOLT,8	18
J500-001110	PANEL	26	M700-000010	PAD	20	V205-001170	BOLT,8	30
J500-001120	PANEL	32	M703-000020	LABEL THERMOMETER	8	V206-000520	BOLT,10	20
K206-000030	PACKING,DRAIN CAP	24	M704-000650	LABEL INST	16	V207-000100	BOLT	18
K221-000030	PACKING	20	M704-000660	LABEL INST	16	V207-000100	BOLT	30
K400-003030	HOSE	22	M704-000670	LABEL INST	16	V223-000100	BOLT,STUD 5	14
K400-003040	HOSE	22	M704-000680	LABEL INST	16	V240-000240	BOLT,HOOK	30
K400-003050	HOSE	22	M704-000690	LABEL INST	16	V262-000190	FLANGE NUT	10
K401-000550	HOSE	22	M704-001400	LABEL INST	16	V262-000190	FLANGE NUT	28
K401-000560	HOSE	22	M704-002440	LABEL,INST	16	V263-000470	NUT,5	14
M040-000470	FRONT DOOR,ASM	26	M705-001060	LABEL, FEATURE	16	V264-000220	FLANGE NUT	2
M102-000590	ROTOR	8	M707-000060	LABEL INST	16	V264-000220	FLANGE NUT	4
M108-000010	CT	12	M707-000070	LABEL INST	16	V264-000220	FLANGE NUT	12
M109-000140	METER (V)	10	M707-000090	LABEL INST	16	V264-000220	FLANGE NUT	22
M109-000210	METER (COOLANT TEMP)	10	M707-000100	LABEL INST	16	V264-000220	FLANGE NUT	26
M109-000240	METER	10	M707-000320	LABEL,INST	16	V264-000220	FLANGE NUT	32
M109-000410	METER	10	M707-000330	LABEL,INST	16	V265-000290	FLANGE NUT	2
M111-000510	BREAKER	12	M707-000370	LABEL,INST	16	V265-000290	FLANGE NUT	4
M111-000531	BREAKER	14	M707-000380	LABEL,INST	16	V265-000310	NUT	30
M111-001400	BREAKER	14	M707-000390	LABEL,INST	16	V265-000450	NUT,8	4
M111-001410	BREAKER	14	M707-000400	LABEL,INST	16	V266-000110	FLANGE NUT	18
M111-001440	BREAKER	14	M707-000410	LABEL,INST	16	V324-000010	WASHER	28
M112-000010	VOLUME COMP	10	M707-000880	LABEL,INST	16	V420-003040	AV RUBBER	30
M126-000000	BREAKER	14	V106-000110	SEAL WASHER	20	V420-003050	PAD	20
M126-000010	BREAKER	14	V109-000210	GASKET	6	V420-003060	PAD	20
M126-000040	BREAKER	14	V109-000270	GASKET	2	V420-003070	STAND RUBBER	26
M305-000510	HOUSING	8	V144-000440	GROMMET	26	V420-003070	STAND RUBBER	28

NUMERICAL PARTS INDEX

Part No	Part description	Page
V420-003150	CUSHION	14
V420-003200	CUSHION	28
V420-003510	STAND RUBBER	26
V420-003510	STAND RUBBER	28
V420-003920	CUSHION	20
V420-003930	CUSHION	20
V475-004710	TUBE	22
V475-005320	TUBE	22
V475-005380	TUBE	22
V475-005550	TUBE	2
V475-005870	TUBE	12
V475-006000	TUBE	22
V475-006130	TUBE	2
V475-006130	TUBE	22
V475-006140	TUBE	22
V475-006260	TUBE	22
V475-006280	TUBE	28
V475-007400	TUBE	24
V475-008640	TUBE	14
V475-008810	TUBE	22
V475-008820	TUBE	22
V476-000250	TUBE	22
V481-000380	BATTERY	30
V486-000240	TERMINAL	30
V490-001110	CLIP	20
V495-001660	HOSE CLAMP	22
V495-002510	BAND	2
V495-002840	BAND	18
V541-000350	SHEET	4
V592-000160	BALL BEARING	8
V649-000130	BLIND RIVET	28
X504-006320	LABEL,BRAND	16
X505-007550	LABEL,CAUTION	16
X505-007560	LABEL,CAUTION	16
X505-007571	LABEL,CAUTION	16
X505-007630	LABEL,CAUTION	16
X505-007650	LABEL,CAUTION	16
X505-007820	LABEL,CAUTION	16
X505-007830	LABEL,CAUTION	16
X505-007840	LABEL,CAUTION	16
X524-002850	LABEL DESIGN	16